



The Bass Clef

The BASS CLEF SIGN  locates the F below the middle of the keyboard.



This is the F line.  The F line passes between the two dots of the F clef sign! 

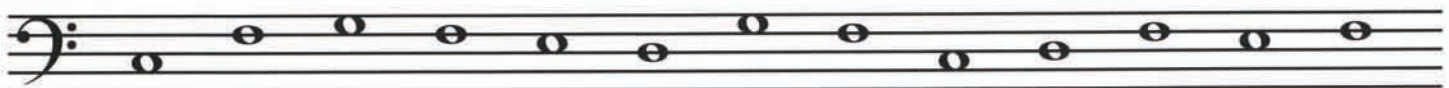
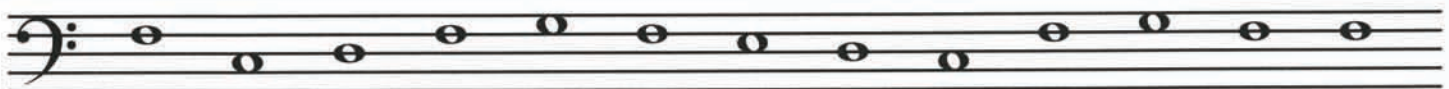
The BASS CLEF SIGN came from the letter F: 



1. Draw five BASS CLEF SIGNS.

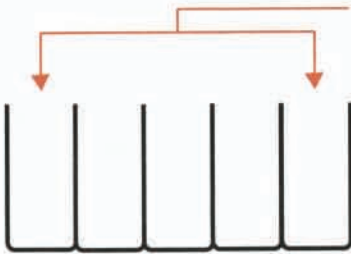


2. Circle each F in the bass clef.

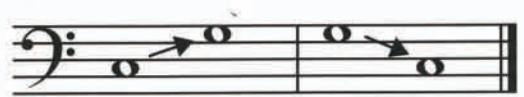


5ths

When you skip 3 white keys, the interval is a **5th**.



5ths are written **LINE-LINE** or **SPACE-SPACE**.



C **G** **G** **C**
line line line line

C **G** **G** **C**
space space space space

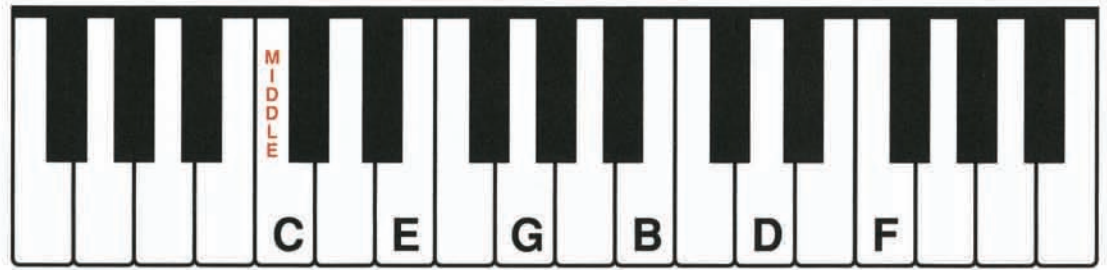
1. Draw a half note UP a 5th from each C and DOWN a 5th from each G on each staff below. Turn all the stems in the treble clef UP. Turn the stem of the G in the bass clef DOWN. Turn the stem of the C in the bass clef UP.

2. Write the name of each note in the square below it—then play and say the note name.

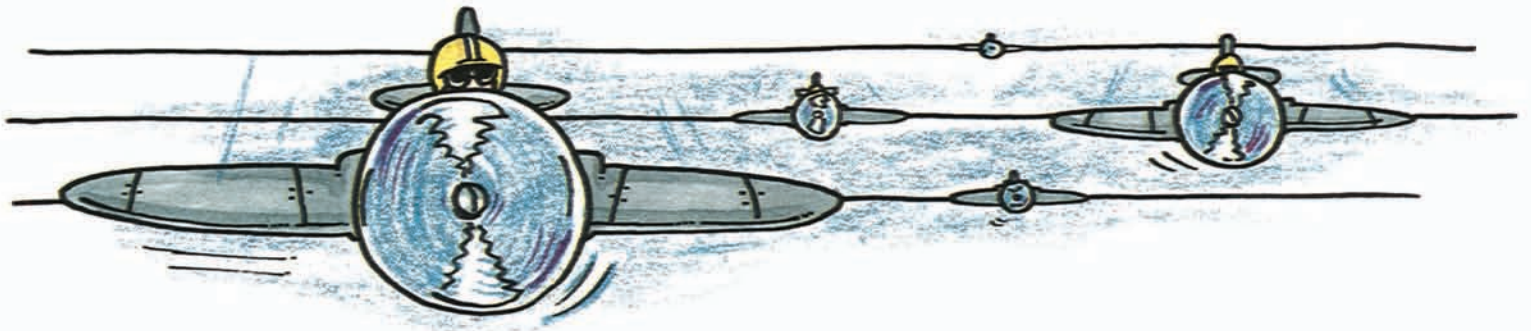
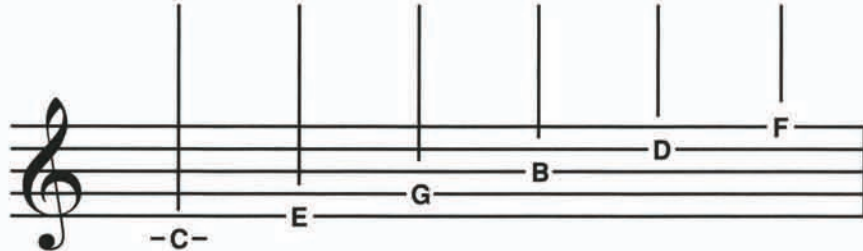
3. Draw a whole note ABOVE the given note in each measure below to make the indicated harmonic interval.

4. Write the names of the notes in the squares. Write the name of the lower note in the lower square; the name of the higher note in the higher square.

Line Notes in Treble Clef



Line notes move by thirds.



1. Write the names of the treble clef lines three times.



2. Write the name of each note in the square below it.



3. Write the name of each note in the square below it. The letters in each group of squares will spell a familiar word.

