

Instructions for Use

1. This BASS CLEF book is designed for use by students who need additional reinforcement in reading music in the bass clef. It is especially useful for vocalists and instrumentalists who are beginning piano study and have previous knowledge of treble clef and rhythmic notation.
2. Principles of bass clef reading are introduced through five finger patterns, scales, intervals and chords using the entire bass staff.
3. A combination of written exercises and playing examples focus on note, pattern, interval, scale and chord identification.
4. This book is an effective supplement for any piano method.

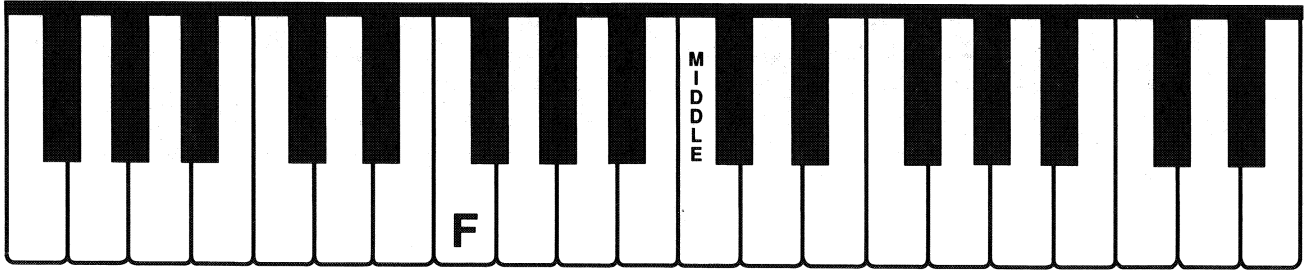
Gayle Kowalchuk
E. L. Lancaster

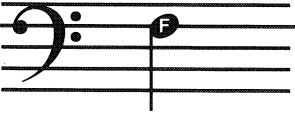

Contents

The Staff	3	Line Notes	20
The Bass Clef	4	Space Notes	21
C Position.....	5	Notes Above the Bass Staff	22
Melodic Intervals in C Position.....	6	Notes Below the Bass Staff	23
Harmonic Intervals in C Position.....	7	C Major Scale	24
Reading in C Position	8	Intervals in the C Major Scale.....	24
G Position	9	C Major Chord Progression	25
Melodic Intervals in G Position.....	10	Reading in C Major	25
Harmonic Intervals in G Position.....	11	G Major Scale	26
Reading in G Position	12	Intervals in the G Major Scale.....	26
Middle C Position	13	G Major Chord Progression	27
F Position	14	Reading in G Major	27
Melodic Intervals in F Position	14	D Major Scale	28
Harmonic Intervals in F Position	15	Intervals in the D Major Scale.....	28
Reading in Middle C and F Positions.....	15	D Major Chord Progression	29
G Position with L.H. an Octave Higher	16	Reading in D Major	29
Melodic Intervals in G Position with L.H. an Octave Higher	17	F Major Scale.....	30
Harmonic Intervals in G Position with L.H. an Octave Higher	18	Intervals in the F major Scale	30
Reading in G Position with L.H. an Octave Higher	19	F Major Chord Progression.....	31
		Reading in F Major.....	31
		Review	32

The Bass Clef

The BASS CLEF SIGN (̣) locates the F below the middle of the keyboard.



This is the F line.  The F line passes between the two dots of the F clef sign! 

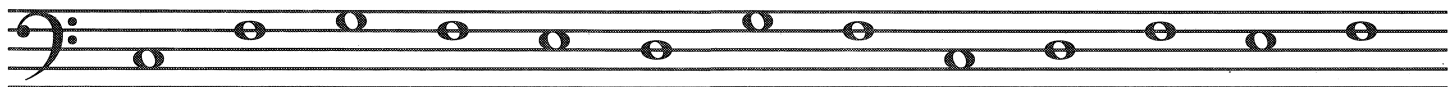
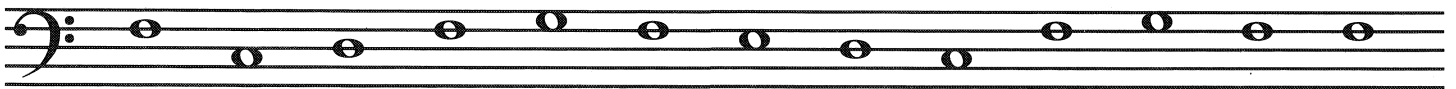
The BASS CLEF SIGN came from the letter F:



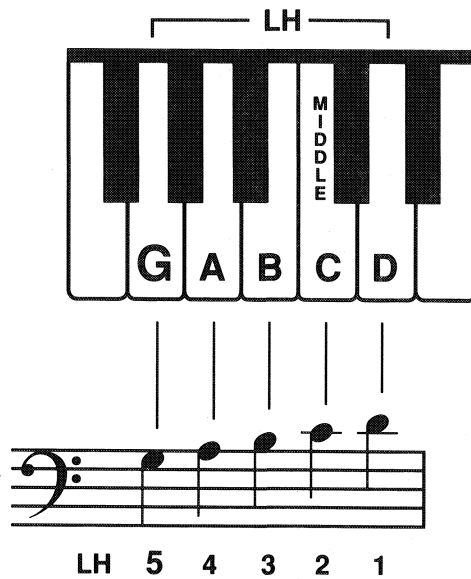
1. Draw five BASS CLEF SIGNS.



2. Circle each bass clef F.



G Position with L.H. an Octave Higher



1. Write the notes in the BASS staff under the squares.
Use QUARTER NOTES and turn all the stems DOWN.

A bass staff with a clef. Above the staff are five squares, each containing a letter: G, A, B, C, and D. The squares are positioned above the first five lines of the staff.

2. Write the name of each note in the square below it—then play and say the note names.

A bass staff in 4/4 time. The notes are G, A, B, C, D, E, F, G, A, B, C, D, E, F, G. Below the staff are 15 empty squares for writing the note names.

3. Write the name of each note in the square below it—then play and say the note names. The letters in each group of squares will spell a familiar word.

A bass staff in 4/4 time. The notes are G, A, B, C, D, E, F, G, A, B, C, D, E, F, G. Below the staff are 15 empty squares for writing the note names.