

Cheer for Our Team!

On the line in each sweater, write the name of the melodic interval that you find in the banner, as shown in the example.



Musical Shamrocks

Draw a line from the definition on the left to the shamrock that matches.

the end •

pedal mark •

time signature •

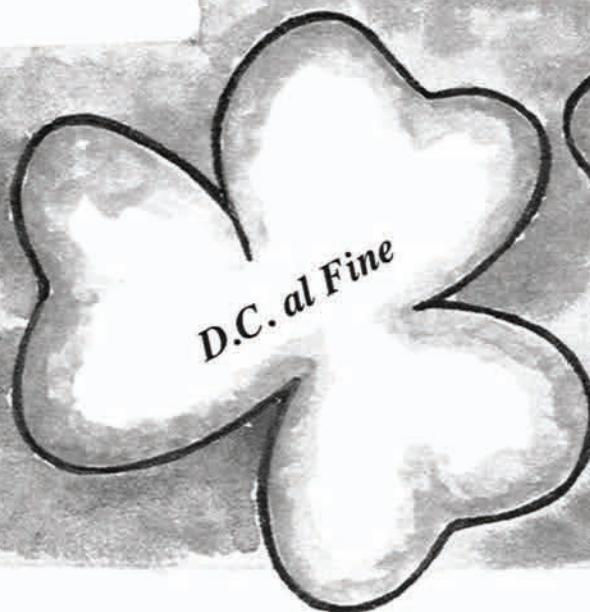
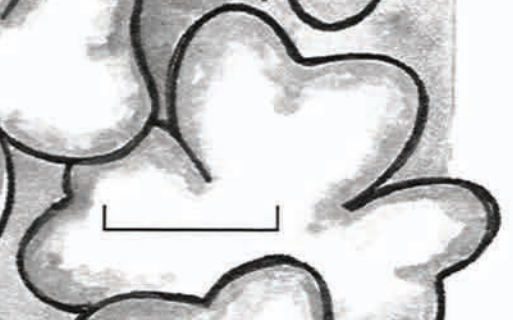
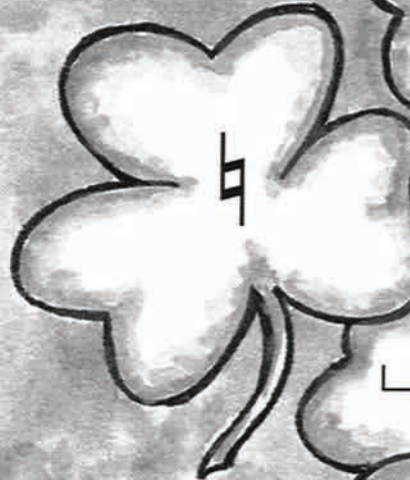
gradually slower •

resume original speed •

octave higher or lower •

natural sign •

repeat from the beginning
and play to the *Fine* (end) •



Beach Fun

Draw lines connecting the starfish with the matching seashell.

