

Naming Line Notes on the Grand Staff

The diagram shows a piano keyboard with the following white keys labeled from left to right: G, B, D, F, A, C, E, G, B, D, F. The C key is labeled 'MIDDLE'. Below the keyboard is a grand staff with two staves. The bass staff (bottom) has line notes G, B, D, F, A. The treble staff (top) has line notes C, E, G, B, D, F. Vertical lines connect the keyboard keys to their corresponding notes on the staves.

1. Write the names of the line notes on the grand staff. Begin with the bass staff.

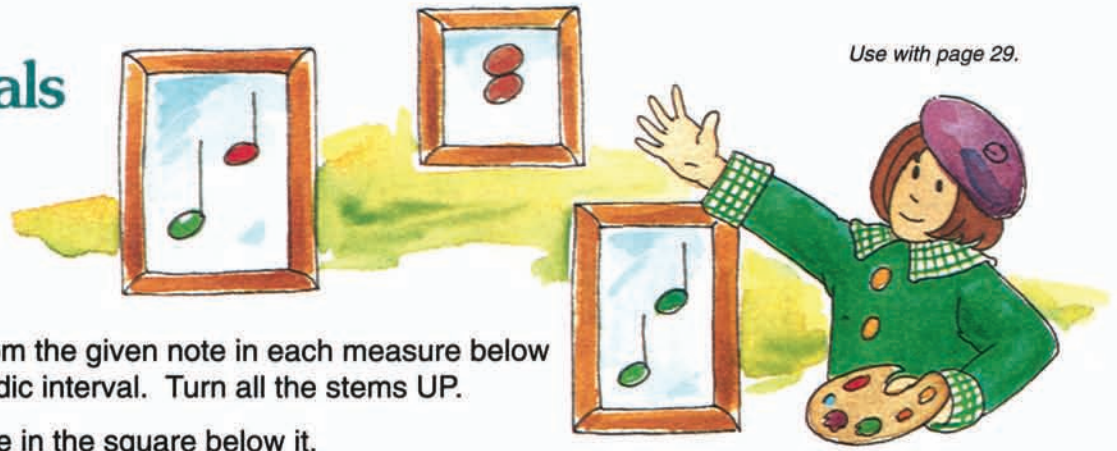
A blank grand staff with two staves. A horizontal line is drawn across the middle of the staves, indicating the middle C position.

2. Write the name of each note in the square below it.

Two musical staves in 4/4 time. The top staff (treble clef) contains a sequence of notes: G4, A4, B4, C5, D5, E5, F5, G5, A5, B5, C6, D6. The bottom staff (bass clef) contains a sequence of notes: G2, A2, B2, C3, D3, E3, F3, G3, A3, B3, C4, D4. Below each note is a small blue square for writing the note's name.

Drawing Intervals

Use with page 29.



1. Draw a half note DOWN from the given note in each measure below to make the indicated melodic interval. Turn all the stems UP.
2. Write the name of each note in the square below it.

7th 6th 4th 5th 7th 6th 4th

6th 4th 7th 5th 6th 7th 3rd

3. Draw a whole note BELOW the given note to make the indicated harmonic interval.
4. Write the names of the notes in the squares. Write the name of the lower note in the lower square; the name of the higher note in the higher square.

7th 4th 6th 5th 7th 3rd 6th

5th 6th 7th 4th 6th 3rd 7th