


Music is made up of **short tones** and **long tones**. We write these tones in **notes**, and we measure their lengths by **counting**.

Quarter Note
a short note.



COUNT: "One"
or: "Quarter"



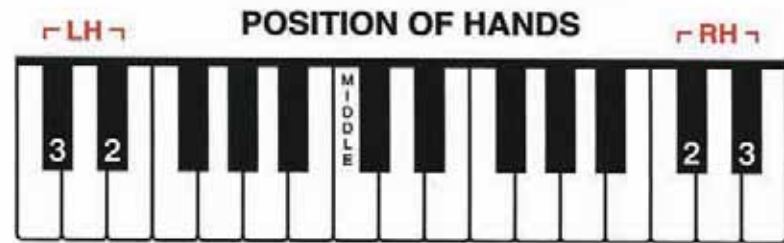
When we clap or tap **ONCE** for each note, we call it clapping or tapping the **RHYTHM**. Clap or tap the following rhythm, counting aloud.

BAR LINES divide the music into equal **MEASURES**.



Right & Left

1. Play & say the finger numbers.
2. Play & sing the words.



RH Fingers:
(Stems UP)

LH Fingers:
(Stems DOWN)

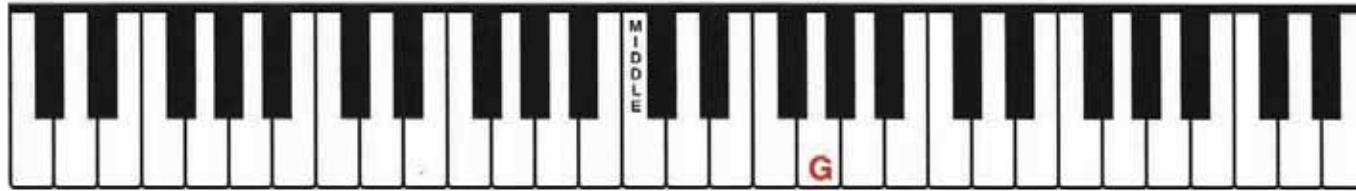
DOUBLE BAR
used at
the end.

The Treble Clef Sign



Locates the G above the middle of the keyboard.

This sign came from the letter G:



This is the G line.

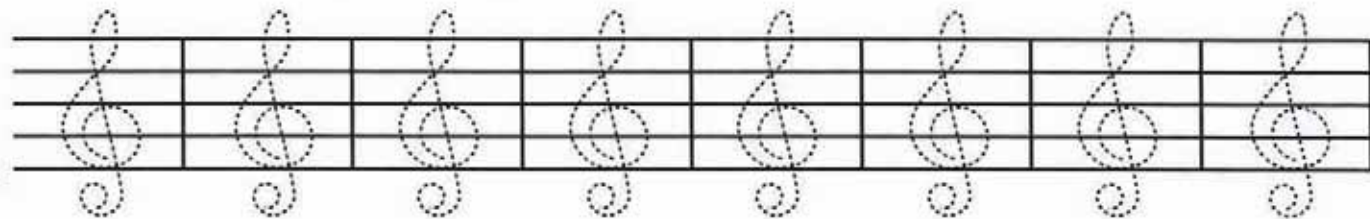
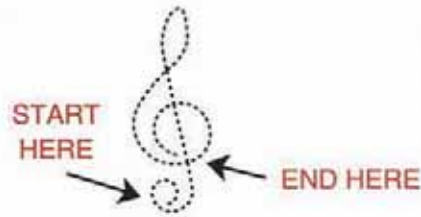
The clef sign curls around the G line.

By moving up or down from this G, you can name any note on the treble staff.

RH 5

mf G, down, down, down, up, up, G, G, down, down, to C.

- Trace this TREBLE CLEF sign.
- Trace these TREBLE CLEF SIGNS. Begin below the staff. Curl the end of the sign around the G line.



- Draw a line of TREBLE CLEF signs without tracing.

Our Team



Brightly

2nd time BOTH HANDS 1 octave HIGHER

1

mf

1. If I could be eight feet tall Our team would be best of all!

2. When our team came out to play, All their team would run a - way.

 Musical notation for the first system of the song. It consists of a grand staff with a treble clef on top and a bass clef on the bottom. The time signature is 4/4. The melody is written in the treble clef. The lyrics are written below the notes.

mf

I could sim - ply drop the ball; in the bas - ket it would fall!

Then our team would yell, "Hoo - ray! Guess who won the game to - day!"

5

 Musical notation for the second system of the song. It consists of a grand staff with a treble clef on top and a bass clef on the bottom. The time signature is 4/4. The melody is written in the treble clef. The lyrics are written below the notes.

DUET PART: (Student plays 1 octave higher 1st time; 2 octaves higher 2nd time.)

2nd time 8va

RH

LH *mp*

 Musical notation for the duet part of the song. It is written on a single staff with a bass clef and a 4/4 time signature. The right hand (RH) part is marked with a '2' above the staff, indicating it should be played two octaves higher. The left hand (LH) part is marked with 'mp' (mezzo-piano).