

TABLE OF CONTENTS

MAJOR OPEN CHORDS

| | |
|--------------------------------|---|
| E, A, D | 4 |
| Testing the Chord | 5 |
| Chord Changing | 5 |
| G, C | 6 |
| Major Chord Progressions | 7 |

MINOR OPEN CHORDS

| | |
|-------------------------------------------|----|
| Em, Am, Dm | 9 |
| Relating the Major and Minor Chords | 10 |
| Major and Minor Chord Progressions | 11 |

DOMINANT SEVENTH OPEN CHORDS

| | |
|----------------------------------------------------------|----|
| E7, A7, D7 | 13 |
| Chord Families (Relating Major, Minor and Seventh) | 14 |
| G7, C7, B7 | 15 |
| Dominant Seventh Chord Progressions | 16 |

MAJOR SEVENTH OPEN CHORDS

| | |
|-----------------------------------------|----|
| Emaj7, Amaj7, Dmaj7, Gmaj7, Cmaj7 | 18 |
| Chord Review | 19 |
| Fmaj7 | 20 |
| Major Seventh Chord Progressions | 20 |

MINOR SEVENTH OPEN CHORDS

| | |
|----------------------------------------|----|
| Em7, Am7, Dm7 | 21 |
| Minor Seventh Chord Progressions | 22 |

MAJOR SIXTH OPEN CHORDS

| | |
|--------------------------------------|----|
| E6, A6, D6, G6, C6 | 23 |
| Major Sixth Chord Progressions | 24 |

MINOR SIXTH OPEN CHORDS

| | |
|--------------------------------------|----|
| Em6, Am6, Dm6 | 25 |
| Chord Review | 26 |
| Minor Sixth Chord Progressions | 27 |

NINTH OPEN CHORDS

| | |
|-----------------------------------------|----|
| Add9 Chords | 28 |
| Add9 Chord Progressions | 29 |
| Dominant Ninth Chords | 30 |
| Dominant Ninth Chord Progressions | 32 |

SUSPENDED OPEN CHORDS

| | |
|-------------------------------------------|----|
| Esus, Asus, Dsus, Gsus | 33 |
| Relating Major and Suspended Chords | 34 |
| Dominant Seventh Suspended Chords | 35 |
| Suspended Chord Progressions | 37 |

DIMINISHED OPEN CHORDS

| | |
|-------|----|
| | 38 |
|-------|----|

AUGMENTED OPEN CHORDS

| | |
|-------|----|
| | 39 |
|-------|----|

MASTER CHORD REVIEW (Chord Families)

| | |
|-------|----|
| | 41 |
|-------|----|

RIGHT-HAND RHYTHM STRUMS

| | |
|-------|----|
| | 42 |
|-------|----|

"OPEN CHORD" PROGRESSIONS

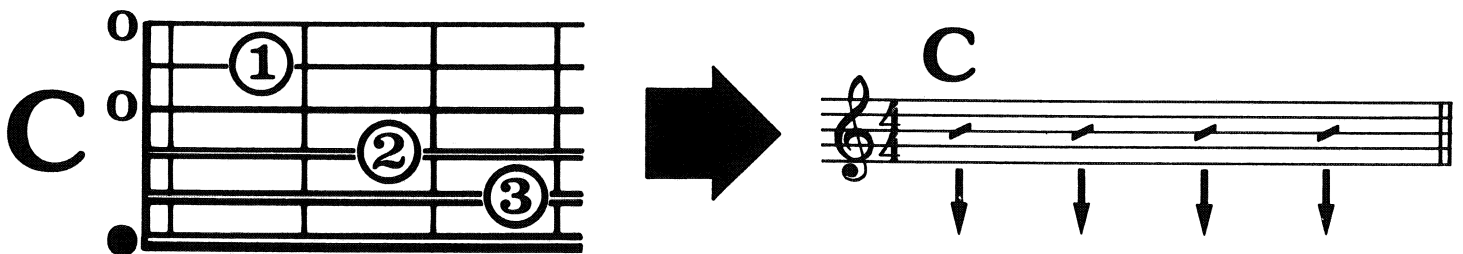
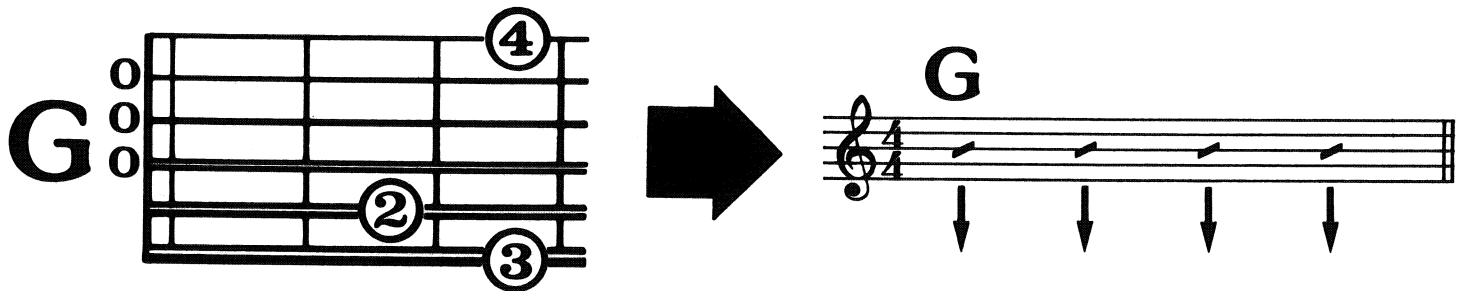
| | |
|-------|----|
| | 45 |
|-------|----|

BASIC CHORD THEORY (What the Numbers Mean)

| | |
|-------|----|
| | 46 |
|-------|----|

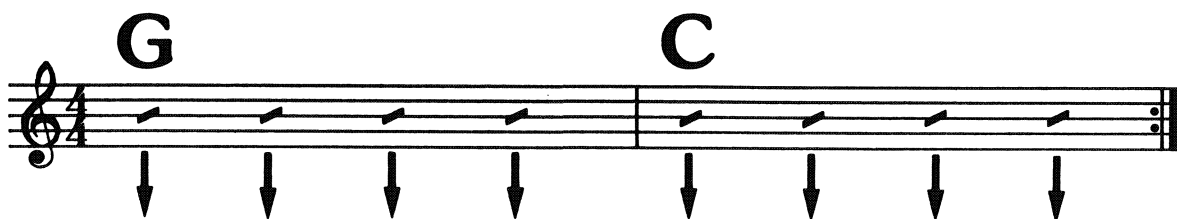
MORE MAJOR CHORDS (G and C)

There are two more Major open chords: **G** and **C**.

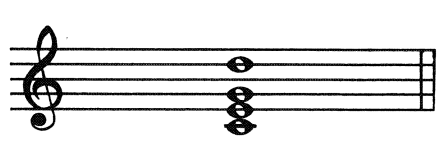


For the **C** chord-
Don't play the 6th string.
Start each strum on the 5th string.


The G and C chords are usually played together like this-



A **Ninth** chord adds the ninth scale degree which is the same as the 2nd scale degree an octave (8 notes) higher.

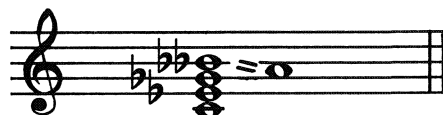


Major Chord
 $1, 3, 5 + 9 = 1, 3, 5, 9$
 Add9



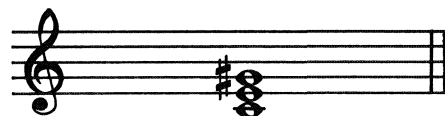
Major Chord
 $1, 3, 5 + b7 + 9 = 1, 3, 5, b7, 9$
 Dominant Ninth

The **Diminished** chord looks like this-




$1, b3, b5, bb7(6)$

The **Augmented** chord has a raised or sharp (#) 5th.



$1, 3, \#5$



Augmented Chord
 $1, 3, \#5 + b7 = 1, 3, \#5, b7$
 Augmented Seventh