

THERE IS ANOTHER SKY

for 2-part voices and piano*

Words by
EMILY DICKINSON (1830–1886)

Music by
RUTH MORRIS GRAY

Full of wonder (♩ = ca. 132-138)

PIANO



4

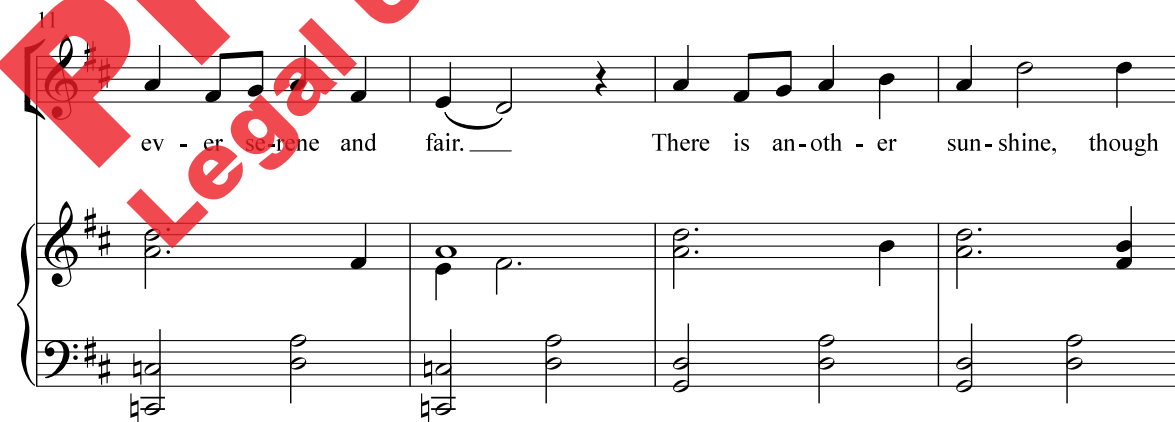


7 PARTS I & II *poco rit.* *a tempo* *mf*

There is an-oth - er sky,



ev - er so lone and fair. — There is an-oth - er sun - shine, though



* Also available for S.A.B. (52285). PianoTrax accompaniment available (A-00016630).
Visit alfred.com for digital scores and audio.

15 *poco rit.* *a tempo*

it be dark-ness, be dark-ness there. _____

poco rit. *a tempo*

19 PART I *mp*

Nev-er mind _____ si - lent fields.

PART II *mp*

Nev-er mind _____ fad - ed for - ests.

mp

23

Whose leaf is ev - er green,

Here is a lit - tle for - est whose leaf is ev - er green,

27 *cresc.* *mf*
 whose leaf is ev - er green. An -

cresc.
 whose leaf is ev - er green.

cresc. *mf*

30
 oth - er sky, an - oth - er sky,

mf
 An - oth - er sky, an - oth - er

mf

33
 an - oth - er sky, an - oth - er sky.

sky, a sky, an - oth - er sky.

mf

37 *poco rit.* *a tempo mf*

There is an-oth - er sky,
There is an-oth - er

poco rit. *a tempo mf*

40

ev - er se-rene and fair. There is an-oth - er
sky, ev - er se-rene and fair.

43 *poco rit.*

sun - shine though it be dark - ness, be dark - ness
There is a sky, though it be dark - ness

poco rit.

46 *a tempo* *mp*

there. Bright - er gar - den,

there. Here is a bright - er gar - den,

a tempo *mp*

50

frost has been. Fad - ing flow - ers,

where not a frost has been. In its un - fad - ing flow - ers,

54 *cresc.*

I hear the bright bee hum.

cresc.

I hear the bright bee hum, I hear the bright bee hum.

cresc.

58

mf



An - oth - er sky, an -

mf



An - oth - er sky,



mf

61



oth - er sky,

an - oth - er sky, an -



an - oth - er sky,

a sky, an -



64

66

f



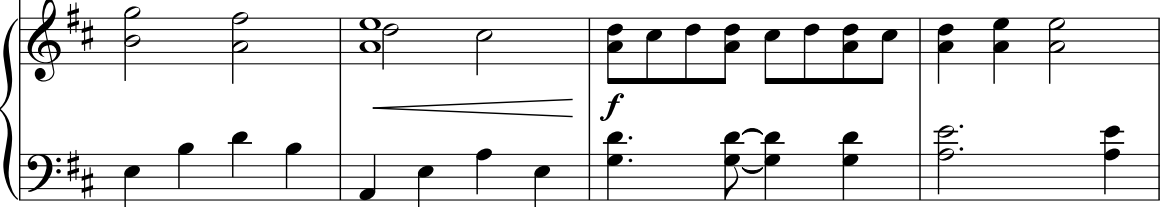
oth - er sky.

An - oth - er sky,



oth - er sky.

An - oth - er



f

68

an - oth - er sky, an -

sky, an - oth - er sky,

71

oth - er sky, an - oth - er sky, an -

a sky, an - oth - er sky,

mf

decresc. *mf*

75

oth er sky!

an - oth - er sky!

rit. *ff*

mf *ff*

cresc. *rit.* *ff* *8va*