

YOU FOR CHRISTMAS

for S.A.T.B. voices and piano
with optional SoundTrax*

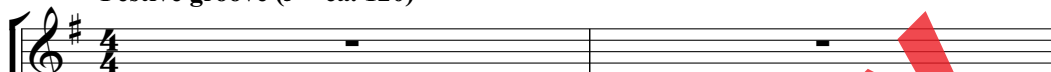
Performance time: approx. 2:50

Arranged by
JACK ZAINO

Words and Music by **KELLY CLARKSON,**
ANDREW BLAKEMORE, and **MARK RONSON**

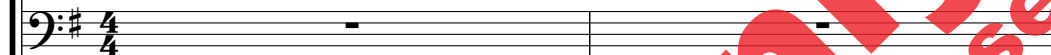
Festive groove (♩ = ca. 120)

SOPRANO
ALTO



SPOKEN SOLO: "Alright, what do y'all want for Christmas? ..."

TENOR
BASS



Festive groove (♩ = ca. 120)

PIANO

Chords: G, Bm7
Dynamics: *mf*

3

... I'm only needin' one thing."
A

Chords: C, Eb

* Also available for S.S.A.B. (52236) and S.S.A. (52237). SoundTrax CD available (52238).
Visit alfred.com for digital scores and audio.

© 2024 SONGS FOR MY SHRINK (% KOBALT SONGS MUSIC PUBLISHING AMERICA),
ANDREW WYATT BLAKEMORE BMI PUB DESIGNEE, and SONGS OF UNIVERSAL, INC.

All Rights for ANDREW WYATT BLAKEMORE BMI PUB DESIGNEE
Administered by WARNER-TAMERLANE PUBLISHING CORP.

This Arrangement © 2026 SONGS FOR MY SHRINK (% KOBALT SONGS MUSIC PUBLISHING AMERICA),
ANDREW WYATT BLAKEMORE BMI PUB DESIGNEE, and SONGS OF UNIVERSAL, INC.

All Rights Reserved. Printed in USA.

Sole Selling Agent for This Arrangement: Alfred Music

5

thou - sand col - or - ful lights, _____ but

Am⁷

D

7

ba - by I'm feel - in' so grey. _____ You *mf*

G

Em

9

know I love sing - in' a - long at Christ - mas, but

Am⁷

D

Preview Only
Legal Use Requires Purchase

11

my heart's miles a - way. This time of year —

G Gmaj7 Em

G Gmaj7 Em Am7

13

— can be — so hard, search - in' for bless -

Am7 D

Am7 D

15

- ings in the dark. If

Gmaj9 E7(sus4) E7

Gmaj9 E7(sus4) E7

17

San - ta has _____ one gift to bring _____ us, I'll

Am⁷

19 *cresc.*

tell him I just want you _____ for Christ - mas. It's cold _____

cresc. *f*

D¹³ D

cresc. *f*

21

_____ but I need your arms _____ now. Wrap me up all _____

G Bm

23 night long, and Christ - mas morn - in' I'll

night long, and I'll

C Cm/Eb

25 be right where I want to be. On - ly thing on

G Bm

27 my list this Christ - mas is

my list is

C Cm/Eb

29

mf

On my mi - ee - ind.

mf

your kiss on my mind.

Am⁷

D

31

No!

I don't need no mis - tile - toe.

G

Em

33

No one lifts my spir - its like you.

Am⁷

D

35

I just want you to know.

mf

This time of year

G Gmaj7 Em Am7

mf

37

mp

Oo

can be so hard, search-in' for bless-

D

39

oo.

- ings in the dark. If

Gmaj9 E7(sus4) E7

41 *cresc.* *mf*

Ah, _____ I'll
 San - ta has _____ one gift to bring _____ us, I'll

*Am*⁷

43 *cresc.* *f*

tell him I just want you _____ for Christ - mas. It's cold _____

*D*¹³ *D* *cresc.* *f*

45 *mf*

_____ out. I need your arms _____ now. Wrap me up all _____

G *Bm*

47 night long, and Christ - mas morn - in' I'll

Musical notation for the first system, including vocal line and piano accompaniment. The vocal line starts with a treble clef and a key signature of one sharp (F#). The piano accompaniment starts with a bass clef and the same key signature. The lyrics are: "night long, and Christ - mas morn - in' I'll".

C Cm/Eb

Piano accompaniment for the first system, showing chords and bass lines. The chords are labeled C and Cm/Eb.

49 be right where I want to be. On - ly thing on

Musical notation for the second system, including vocal line and piano accompaniment. The lyrics are: "be right where I want to be. On - ly thing on".

G Bm

Piano accompaniment for the second system, showing chords and bass lines. The chords are labeled G and Bm.

51 my list this Christ - mas is my list is you, *mf*

Musical notation for the third system, including vocal line and piano accompaniment. The lyrics are: "my list this Christ - mas is my list is you, *mf*".

C Cm/Eb

Piano accompaniment for the third system, showing chords and bass lines. The chords are labeled C and Cm/Eb.

53

you, —

mf

Tell me it's not too late. —

mf

Am⁹ D(sus4)

55

you, —

Sweet as a can - dy cane. —

Gmaj⁹ Em

57

you. —

Give me feel - in's I can't ex - plain. —

Am⁹ D(sus4)

Preview Only
Legal Use Requires Purchase

59 *mp*

If

I got it in a bad way! ____

Gmaj9 Em

61

San - ta has ____ one gift to bring ____ us, I'll *mp*

Am9 D

mp

63 *cresc.* *f*

tell him I just want you ____ for Christ - mas. It's cold ____

cresc. *f*

Bm E7

cresc. *f*

65

out. I need your arms now. Wrap me up all

A C#m D

67

night long, and Christ - mas morn - in' I'll
night long, and I'll

Dm6

69

be right where I wan - na be. On - ly thing on

A C#m

Preview Only
 Legal use requires purchase

71 SOPRANO

— my list — this Christ - mas is — you, —

ALTO

— my list — is —

TENOR & BASS

— my list — is —

D

Dm/F

73

you, — you, —

you, — you, — you, —

you, — yeah, you, — yeah,

A

C#m7

75

— yeah, you, — yeah, yeah, — yeah, — you, —

— yeah, you, — yeah, yeah, — yeah you, —

you, — yeah, you, — yeah, yeah, — yeah, — you

D Dm⁶/F

77

you. —

you, — you. —

yeah, you, — yeah.

A C[#]m⁷

79 *mf* *cresc.*

Ah.

mf *cresc.*

Ah.

mf *cresc.*

Ah.

D Dm⁶/F

mf *cresc.*

8^{vb}...

81 *rit.* *f*

rit. *f*

rit. *f*

rit. *f*

A

SPOKEN SOLO:
"Merry Christmas,
everybody!"

8