

the Treble Clef

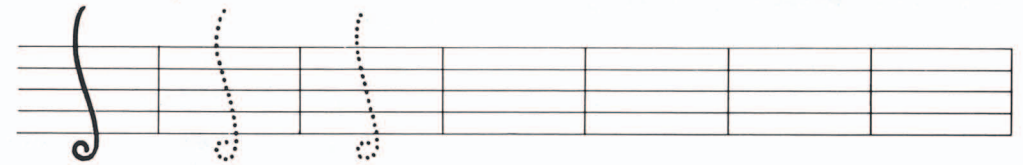
The TREBLE CLEF was originally the letter G. It gave the location of the G note on the staff and was used for the highest notes, so it was called the G, or TREBLE (which means highest) CLEF.

It grew from:



How to draw the Treble Clef

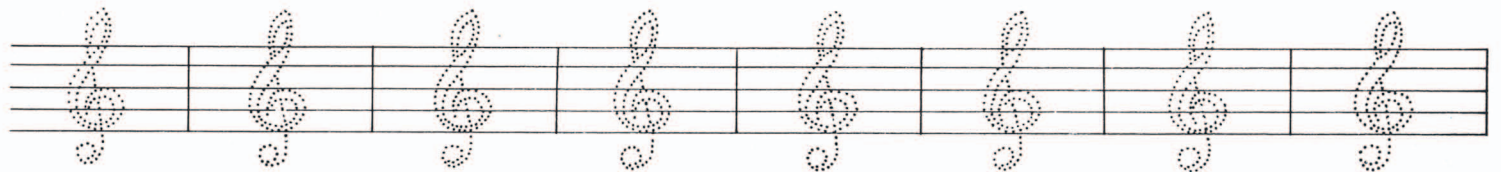
1st, draw the
LINE and TAIL,



add the
TOP LOOP,

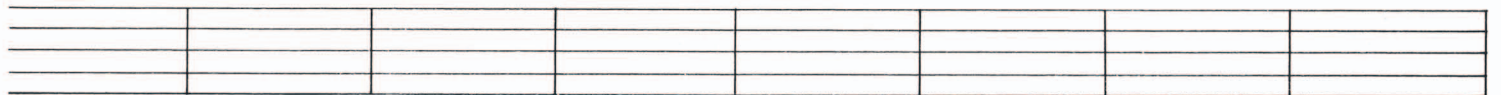


add the
BOTTOM LOOP.



Trace this line of TREBLE CLEF signs.

Draw a line of TREBLE CLEF signs.



RHYTHM:

Note Values



In the square to the right of each note, write the number of beats each note should receive.

	= <input type="text"/>		= <input type="text"/>
	= <input type="text"/>		= <input type="text"/>
	= <input type="text"/>		= <input type="text"/>
	= <input type="text"/>		= <input type="text"/>
	= <input type="text"/>		= <input type="text"/>
	= <input type="text"/>		= <input type="text"/>
	= <input type="text"/>		= <input type="text"/>

Rhythm-ε-Tick

Add up the total number of beats, then write the total in each square.

	+		=	<input type="text"/>
	+		=	<input type="text"/>
	+		=	<input type="text"/>
	+		=	<input type="text"/>
	+		=	<input type="text"/>
	+		=	<input type="text"/>
	+		=	<input type="text"/>
	+		=	<input type="text"/>
	+		=	<input type="text"/>
	+		=	<input type="text"/>
	+		=	<input type="text"/>
	+		=	<input type="text"/>