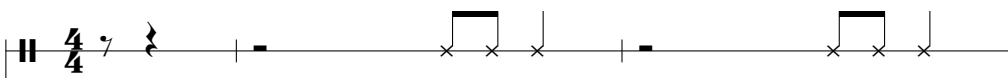



FANGA ALAFIA

for 2-part voices and piano
with optional percussion and SoundTrax*

Traditional Welcome Song
Arranged by ANDY BECK

Joyful and rhythmic (♩ = ca. 108)

HANDCLAPS 

PIANO *mf* 

3 

5 PART I *mf*
Fan - ga - a - la - fi - a.

PART II *mf*
A - shé, a - shé!



“Fanga Alafia” is a joyful greeting song with lyrics from three West African languages: Yoruba, Gio, and Hausa. The melody is borrowed from the American folk song “Li'l Liza Jane.” “Fanga Alafia” usually accompanies a traditional dance (many tutorials can be found online). Consider adding movement throughout or just in measures 32-41.

PRONUNCIATION: FAHN-gah ah-LAH-fee-ah. Ah-SHAY, ah-SHAY!

* Also available for 3-part mixed (51094) and T.B.B. (51095). SoundTrax CD available (51097).
Visit alfred.com for digital scores and audio.
Visit alfred.com/choralparts to download free parts for gathering drum, djembe, and shakers.

Copyright © 2023 by Alfred Music
All Rights Reserved. Printed in USA.

7

Fan - ga — a - la - fi - a.

A - shé, — a - shé!

9

Fan - ga — a - la - fi - a.

A - shé, — a - shé!

11

Fan - ga — a - la - fi - a.

A - shé, — a - shé! A -

13

shé, a - shé!

A - shé, a - shé!

A - shé, a - shé!

A - shé, a - shé!

15

Fan - ga a - la - fi - a. A - shé, a - shé! A -

Fan - ga a - la - fi - a. A - shé, a - shé!

Fan - ga a - la - fi - a. A - shé, a - shé!

17

shé, a - shé!

A - shé, a - shé!

A - shé, a - shé!

A - shé, a - shé!

19

Fan - ga — a - la - fi - a. A - shé, — a - shé!

Fan - ga — a - la - fi - a. A - shé, — a - shé!

21

handclaps

handclaps

23

Wel - come, — good neigh - bor, wel - come, — good friend.

(close to "mm") *(close to "mm")*

Wel - come, — wel - come. —

25 *handclaps*

Hears we un-fold and hands we ex-tend.

handclaps

Hears we un-fold and hands we ex-tend.

Piano accompaniment for measures 25-27.

28 *f-p* *2nd time—cresc.*

Fan - ga a - la - fi - a. A - shé, a - shé!

f-p *2nd time—cresc.*

Fan - ga a - la - fi - a. A - shé, a - shé!

Piano accompaniment for measures 28-29.

30 *f*

Fan - ga a - la - fi - a. A - shé, a - shé!

f

Fan - ga a - la - fi - a. A - shé, a - shé!

Piano accompaniment for measures 30-31.

32

PART I

mf

Musical staff for Part I, measure 32. The staff contains a melodic line with a quarter rest, followed by a quarter note G4, an eighth note A4, and a quarter note B4. The key signature has two flats (Bb, Eb).

Fan - ga, fan - ga a - la - fi - a.

Piano accompaniment for measures 32-33. The right hand has a whole rest. The left hand plays a rhythmic accompaniment of eighth notes. A '(percussion break)' is indicated above the staff. The dynamic is *mf*.

34

PART I

Musical staff for Part I, measure 34. The staff contains a melodic line with a quarter rest, followed by a quarter note G4, an eighth note A4, and a quarter note B4. The key signature has two flats (Bb, Eb).

Fan - ga, fan - ga a - la - fi - a.

PART II

mf

Musical staff for Part II, measure 34. The staff contains a melodic line with a quarter rest, followed by a quarter note G4, an eighth note A4, and a quarter note B4. The key signature has two flats (Bb, Eb).

A - la - fi - a, a la - fi - a.

Piano accompaniment for measures 34-35. The right hand has a whole rest. The left hand plays a rhythmic accompaniment of eighth notes. The dynamic is *mf*.

36

DESCANT (optional)

mf

Musical staff for Descant, measure 36. The staff contains a melodic line with a quarter rest, followed by a quarter note G4, an eighth note A4, and a quarter note B4. The key signature has two sharps (F#, C#).

A - shé, a -

PART I

Musical staff for Part I, measure 36. The staff contains a melodic line with a quarter rest, followed by a quarter note G4, an eighth note A4, and a quarter note B4. The key signature has two sharps (F#, C#).

Fan - ga fan - ga a - la - fi - a.

PART II

Musical staff for Part II, measure 36. The staff contains a melodic line with a quarter rest, followed by a quarter note G4, an eighth note A4, and a quarter note B4. The key signature has two sharps (F#, C#).

A - la - fi - a.

Piano accompaniment for measures 36-37. The right hand has a whole rest. The left hand plays a rhythmic accompaniment of eighth notes. The dynamic is *mf*.

38

grad. cresc.

shé! A - shé, a - shé! A -

Fan - ga, fan - ga a - la - fi - a.

A - la - fi - a, a - la - fi - a.

grad. cresc.

40

handclaps (rejoin section)

shé! A - shé, a - shé!

Fan - ga, fan - ga a - la - fi - a.

A - la - fi - a.

f

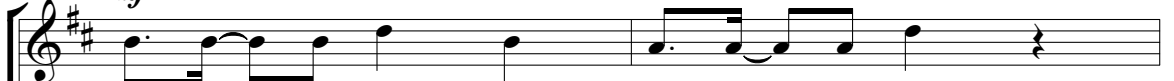
handclaps

handclaps

handclaps

42

mf



Wel - come, _ good neigh - bor, wel - come, _ good friend.

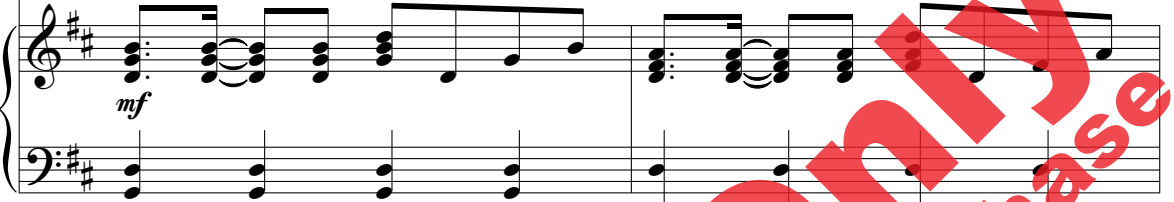
mf (close to "mm")

(close to "mm")



Wel - come, _

wel - come. _



mf

44



Hearts we _ un-fold and hands we _ ex-tend.

handclaps



Hearts we _ un-fold and hands we _ ex-tend.

handclaps



47

f



Fan - ga a - la - fi - a. A - shé, _ a - shé!

f



Fan - ga a - la - fi - a. A - shé, _ a - shé!



f

Fan - ga — a - la - fi - a. A - shé, — a - shé!

Fan - ga — a - la - fi - a. A - shé, — a - shé!

51 *p* *cresc.*
Fan - ga — a - la - fi - a. A - shé, — a - shé!

p *cresc.*
Fan - ga — a - la - fi - a. A - shé, — a - shé!

p *cresc.*

53 *f*
Fan - ga — a - la - fi - a. A - shé, — a - shé! A -

f
Fan - ga — a - la - fi - a. A - shé, — a - shé!

f

55

2nd time only
SOLO (or small group)

(end solo)

shé, a - shé!

shé, a - shé!

A - shé, a - shé! A - shé, a - shé!

57

sing f

A - shé, a -

Fan - ga a - la - fí - a. A - shé, a - shé! A -

Fan - ga a - la - fí - a. A - shé, a - shé!

1.

59

2.

60

mf

A - shé, a - shé! Fan - ga a - la - fi - a.

A - shé, a - shé!

2.

mf

mf

61

mf

Fan - ga a - la - fi - a. A - shé, a -

A - shé, a -

63

f

handclaps

f

handclaps

f

shé!

shé!

f

f