

THE BAT

for 2-part voices and piano
with optional PianoTrax*

Words and Music by
ANDY BECK

Vigorously (♩ = ca. 144)

PIANO

The piano introduction consists of two systems. The first system has a treble clef staff with a melody starting on G4, moving to A4, B4, and C5, and a bass clef staff with a rhythmic accompaniment of eighth notes. Dynamics are marked *f* and *mf*. The second system continues the accompaniment with a *decresc.* marking.

Measures 4-6 of the piano accompaniment. The treble clef staff features a melodic line with a *decresc.* marking. The bass clef staff provides a steady eighth-note accompaniment.

7 PART I
mp

Hang - ing from branch - es like the leaves.

PART II

Measures 7-10. Part I (Soprano) and Part II (Alto) vocal lines are shown. The piano accompaniment continues with a *mp* dynamic. A large red watermark 'Preview Only' is overlaid on the page.

* PianoTrax 15 accompaniment CD available (49869).
Visit alfred.com for digital scores and audio.

Copyright © 2023 by Alfred Music
All Rights Reserved. Printed in USA.

To purchase a full-length performance recording of this piece, go to alfred.com/downloads

9



Cling - ing to raft - ers in the eaves.

11



mp

Stay - ing a - sleep through-out the day

13



Wak - ing at night to fly a - way.

15

mf

Tak - ing flight in the dark of night, the

Tak - ing flight in the dark of night, the

mf

17

19

mp

bat, the bat. The moon is

bat, the bat. The moon is

mp

20

cast - ing a glow up - on the ground. The

cast - ing a glow up - on the ground. The

23

mp *molto cresc.*

shad - ows are cir - cling round and round and

mp *molto cresc.*

shad - ows are cir - cling round and round and

mp *molto cresc.*

26

27 *f*

round and round and round. Not a witch or sor - cer - er,

round and round and round. Not a witch or sor - cer - er,

vd

29

vam - pire or vil - lain. Just a mys - tic

vam - pire or vil - lain. Just a mys - tic

vd

32

fp

mam - mal with vir - tues ves - per - til - ian.*

fp

mam - mal with vir - tues ves - per - til - ian.*

sub. p

35

The bat.

f

The bat.

sub. f

mf

38

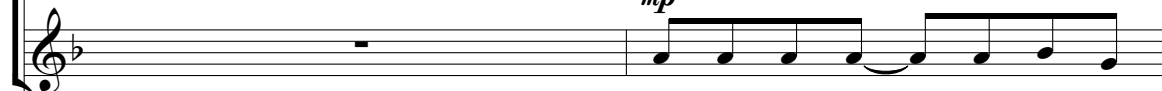
decresc.

* virtues vespertilian = bat-like qualities

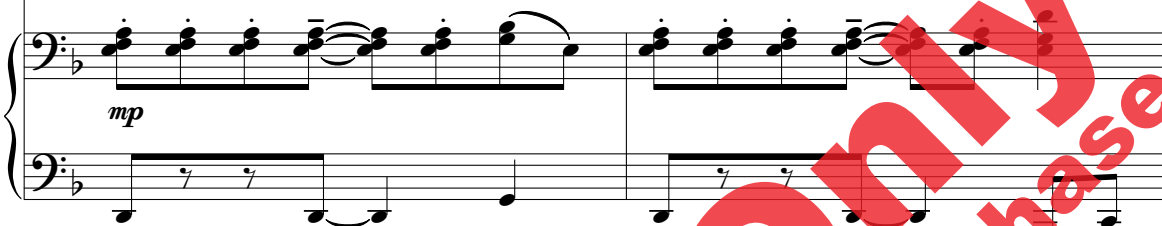
41

mp

Hang - ing from branch - es like the leaves.

mp

Hang - ing from branch - es like the

mp

43



Cling - ing to raft - ers in the leaves.



leaves.

Cling - ing to raft - ers in the



45

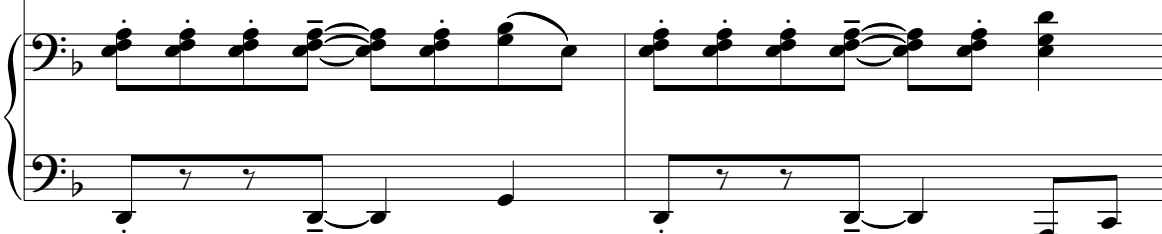


Stay - ing a sleep ___ through-out the day.



eaves.

Stay - ing a - sleep ___ through-out the



47

Wak - ing at night — to fly a - way.
 day. Wak - ing at night — to fly a -

49

mf Tak - ing flight — in the dark of night, the
 way. *mf* In the dark of night, the

51

bat, the bat. The moon is
 bat, the bat. The moon — is

53 *mp*

54

fad - ing, the night will soon be gone. Re -

fad - ing, the night will soon be gone. Re -

57

turn now to hid - ing. *mp* *molto cresc.* Fast a - way be -

turn now to hid - ing. *mp* *molto cresc.* Fast a - way be -

60

61

fore the break of dawn. *f* Not a witch or sor - cer - er,

fore the break of dawn. *f* Not a witch or sor - cer - er,

63

vam - pire or vil - lain. Just a mys - tic

vam - pire or vil - lain. Just a mys - tic

66

mam - mal with vir - tues ves - per - til - ian.

mam - mal with vir - tues ves - per - til - ian.

fp

fp

sub. p

69

The bat.

The bat.

sub. f

72 *mf*
The bat.
mf
The bat.

74 *mp*
The bat.
mp
The bat.

76

sub. f *ff*