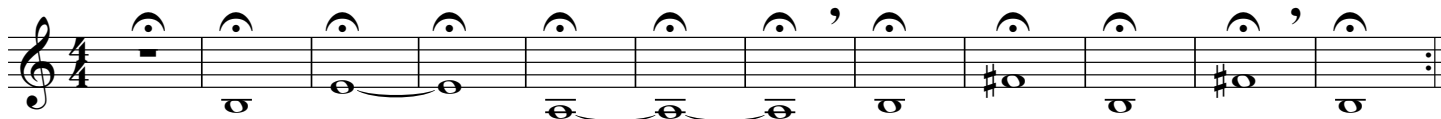
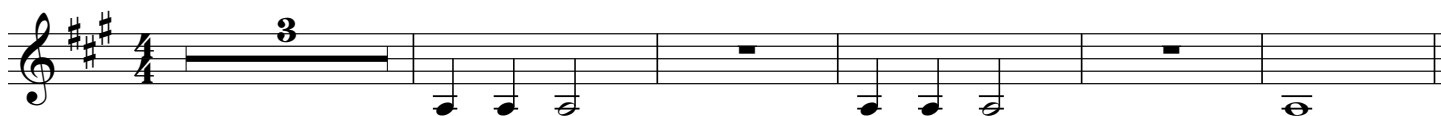


# Concert G Major (Your A Major)

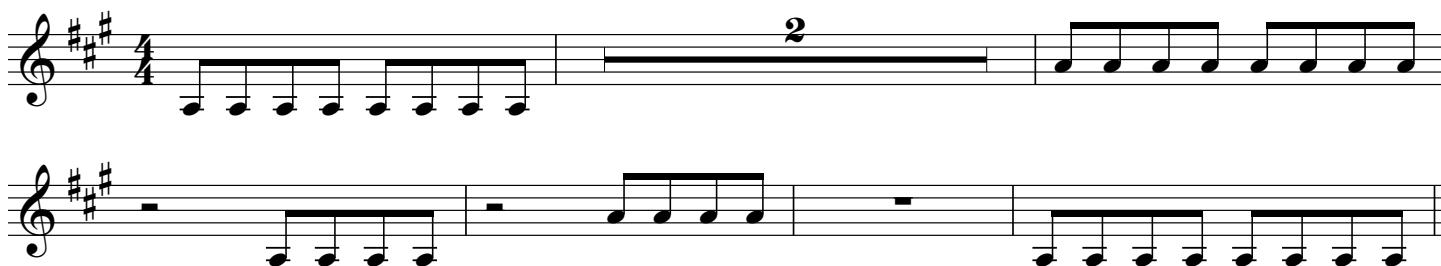
## 1 TUNING



## 2 PASSING THE TONIC



## 3 PASSING THE TONIC



## 4 CONCERT G MAJOR SCALE AND ARPEGGIO (YOUR A MAJOR)



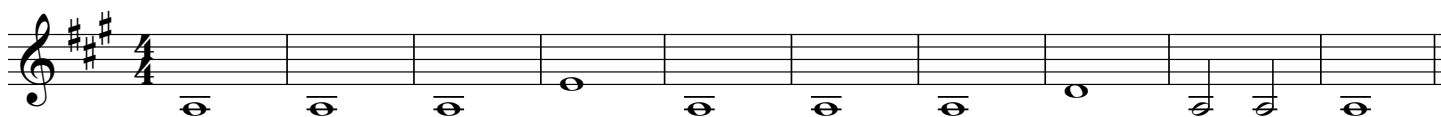
## 5 CHROMATIC SCALE



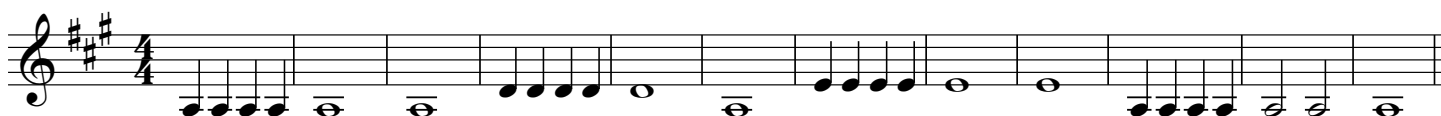
## 6 SCALE PATTERN



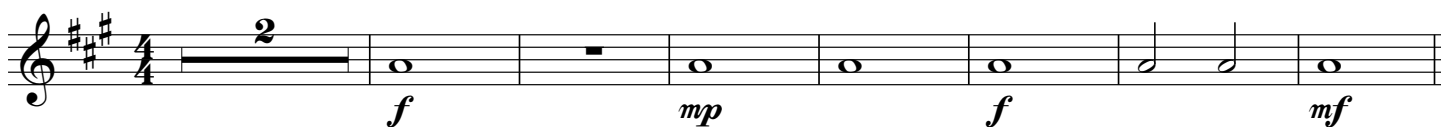
## 7 BALANCE AND INTONATION: PERFECT INTERVALS



## 8 BALANCE AND INTONATION: DIATONIC HARMONY



## 9 BALANCE AND INTONATION: FAMILY BALANCE

*f**mp**f**mf*

# Concert B $\flat$ Major (Your C Major)

## 166 PASSING THE TONIC



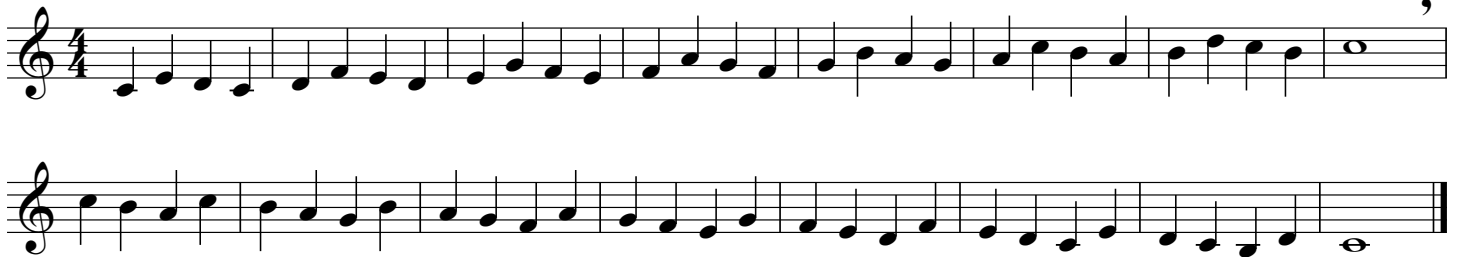
## 167 CONCERT B $\flat$ MAJOR SCALE AND ARPEGGIO (YOUR C MAJOR)



## 168 CHROMATIC SCALE



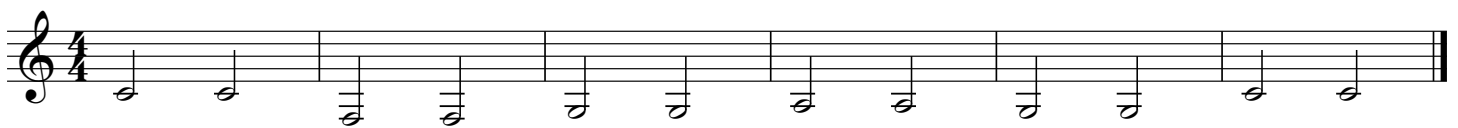
## 169 SCALE PATTERN



## 170 BALANCE AND INTONATION: PERFECT INTERVALS



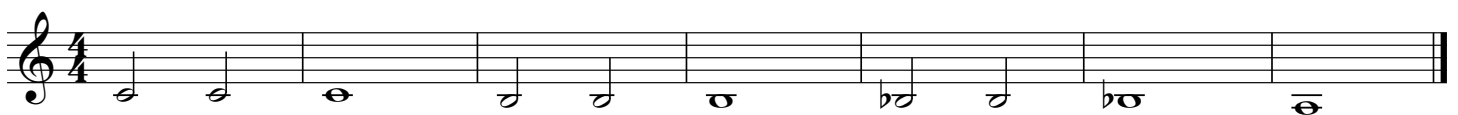
## 171 BALANCE AND INTONATION: DIATONIC HARMONY



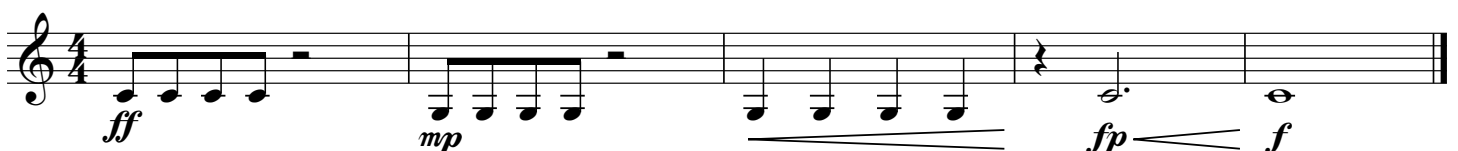
## 172 BALANCE AND INTONATION: LAYERED TUNING



## 173 BALANCE AND INTONATION: SHIFTING CHORD QUALITIES



## 174 DYNAMICS



# Concert F# Minor (Your G# Minor)

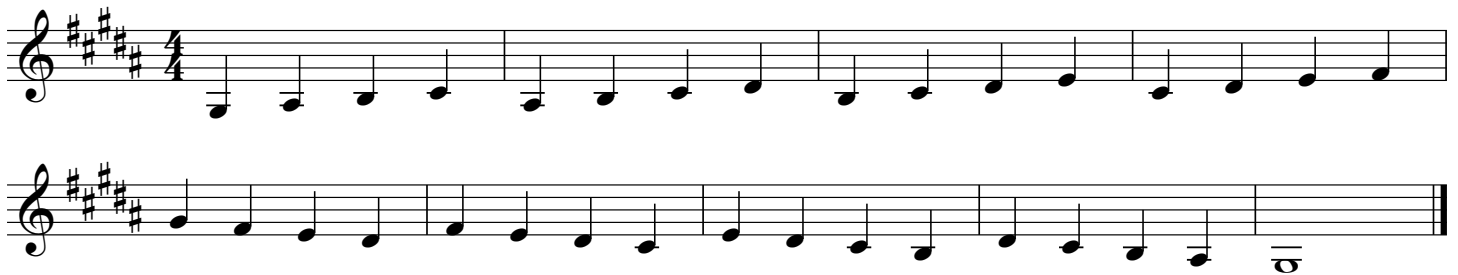
## 237 PASSING THE TONIC



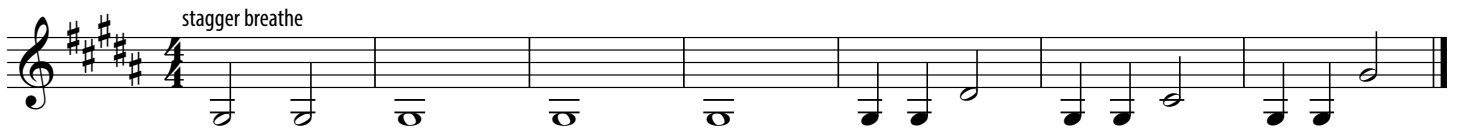
## 238 CONCERT F# MINOR SCALE AND ARPEGGIO (YOUR G# MINOR)



## 239 SCALE PATTERN



## 240 BALANCE AND INTONATION: PERFECT INTERVALS



## 241 BALANCE AND INTONATION: DIATONIC HARMONY



## 242 BALANCE AND INTONATION: FAMILY BALANCE



## 243 BALANCE AND INTONATION: LAYERED TUNING



## 244 DYNAMICS

