

# Concert G Major

## 1 TUNING

## 2 PASSING THE TONIC

## 3 PASSING THE TONIC

## 4 CONCERT G MAJOR SCALE AND ARPEGGIO

## 5 CHROMATIC SCALE

## 6 SCALE PATTERN

## 7 BALANCE AND INTONATION: PERFECT INTERVALS

For this exercise, and others like it, div. will only be marked at the first instance. Other measures with multiple notes should also be divisi.

## 8 BALANCE AND INTONATION: DIATONIC HARMONY

## 9 BALANCE AND INTONATION: FAMILY BALANCE

# Concert B $\flat$ Major

## 166 PASSING THE TONIC



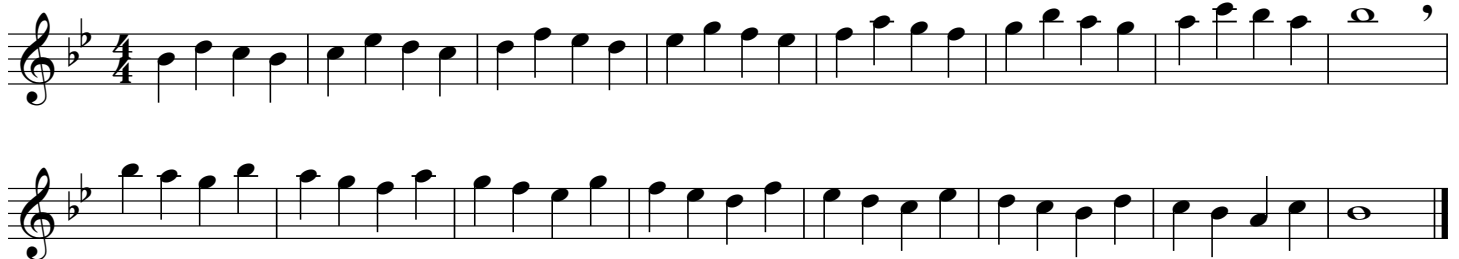
## 167 CONCERT B $\flat$ MAJOR SCALE AND ARPEGGIO



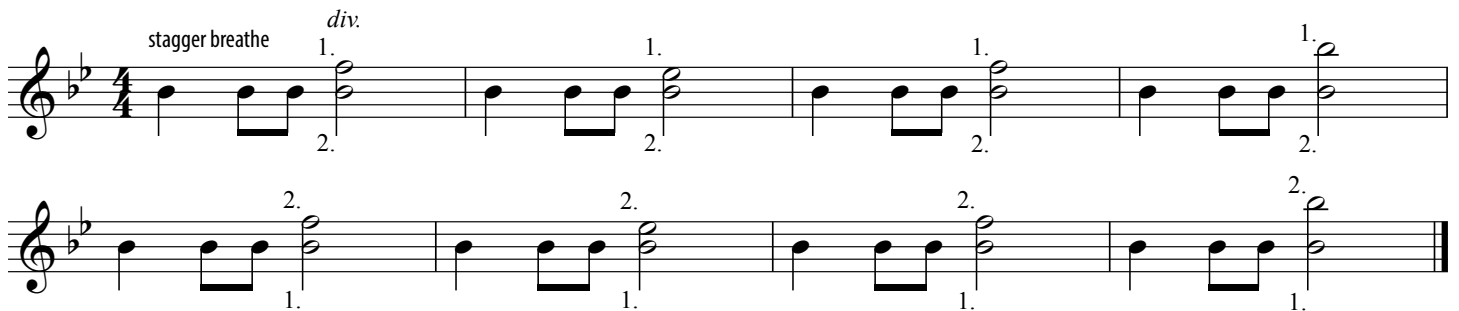
## 168 CHROMATIC SCALE



## 169 SCALE PATTERN



## 170 BALANCE AND INTONATION: PERFECT INTERVALS



## 171 BALANCE AND INTONATION: DIATONIC HARMONY



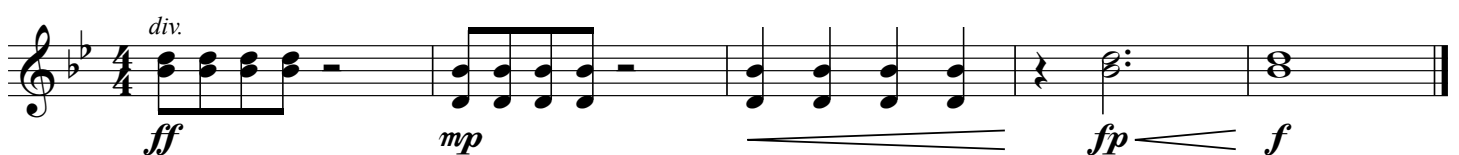
## 172 BALANCE AND INTONATION: LAYERED TUNING



## 173 BALANCE AND INTONATION: SHIFTING CHORD QUALITIES



## 174 DYNAMICS



# Concert F# Minor

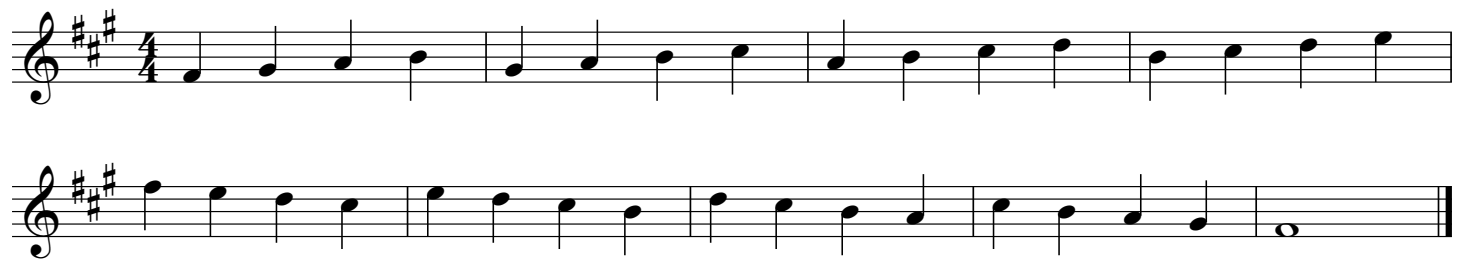
## 237 PASSING THE TONIC



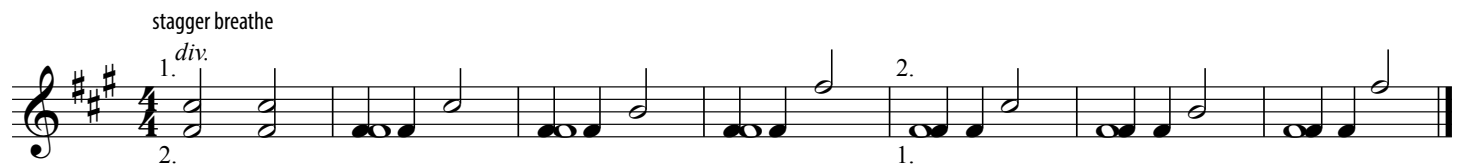
## 238 CONCERT F# MINOR SCALE AND ARPEGGIO



## 239 SCALE PATTERN



## 240 BALANCE AND INTONATION: PERFECT INTERVALS



## 241 BALANCE AND INTONATION: DIATONIC HARMONY



## 242 BALANCE AND INTONATION: FAMILY BALANCE



## 243 BALANCE AND INTONATION: LAYERED TUNING



## 244 DYNAMICS

