

GONNA SING

(When the Spirit Says Sing)

for T.T.B. voices, a cappella
with percussion*

Traditional Spiritual
Arranged by **ANDY BECK**

Rhythmically (♩ = ca. 104)

TENOR I
TENOR II

SHAKER

p

p

3

sing when the spir - it says sing, gon - na

5

sing when the spir - it says sing, — gon - na

7

sing when the spir - it says sing, and o -

Preview Only
Legal Use Requires Purchase

* Also available for 3-part mixed (48425), S.S.A. (48426), and 2-part (48428). Visit alfred.com for digital scores and audio.

Percussion parts are on pages 10-12.

"I'm Going to Sing When the Spirit Says Sing" is an African-American spiritual that comes from the oral tradition, and makes use of a common AAAB form in the lyrics. Just one word changes in the A line between verses, so it was easy for a song-leader to improvise new verses. This flexibility in performance has led to a wonderful proliferation of versions of this beloved song.

Copyright © 2020 by Alfred Music
All Rights Reserved. Printed in USA.

To purchase a full-length performance recording of this piece, go to alfred.com/downloads

9

bey the spir - it of the Lord.

SHAKER

CONGAS

DJEMBE

p play downbeats on lower pitch throughout

11

TENOR I & II

BASS

cresc.

cresc.

cresc.

13

mp

14

Gon - na sing when the spir - it says

mp

mp

mp

mp

8

sing, gon - na sing when the spir - it says

This system contains measures 15 and 16. It features a vocal line with a treble clef and a key signature of two sharps (F# and C#). The lyrics are "sing, gon - na sing when the spir - it says". The piano accompaniment consists of a grand staff with three staves: two for the right hand and one for the left hand. The music is in a simple, hymn-like style with a steady rhythm.

8

sing, — gon - na sing when the spir - it says

This system contains measures 17 and 18. The vocal line continues with the lyrics "sing, — gon - na sing when the spir - it says". The piano accompaniment continues with the same instrumental texture as the previous system.

8

sing, and o - bey the spir - it of the

This system contains measures 19 and 20. The vocal line continues with the lyrics "sing, and o - bey the spir - it of the". The piano accompaniment continues with the same instrumental texture as the previous systems.

21

Lord. *mf* Gon - na

Lord. *mf*

Handclap accompaniment for measures 21-22.

23

clap *handclaps* when the spir - it says clap, gon - na

mf

25

clap *handclaps* when the spir - it says clap, gon - na

mf

27 *handclaps*

clap when the spir - it says clap, and o -

handclaps

29

bey the spir - it of the Lord.

31 *f* 32 *f*

Gon - na shout "Hal - le, hal - le" when the

f

33

8 spir - it says shout, gon - na shout "Ha - le - lu -

This system contains measures 33 and 34. It features a vocal melody in treble and bass clefs with a key signature of one sharp (F#). The lyrics are "spir - it says shout, gon - na shout 'Ha - le - lu -". The piano accompaniment consists of three staves: a right-hand part with eighth-note chords and a left-hand part with a steady eighth-note bass line.

35

8 jah!" Gon - na shout "Hal - le, hal - le" when the

This system contains measures 35 and 36. The vocal melody continues with the lyrics "jah!" and "Gon - na shout 'Hal - le, hal - le' when the". The piano accompaniment continues with the same rhythmic pattern of eighth notes.

37

8 spir - it says shout, and o - bey the spir - it of the

This system contains measures 37 and 38. The vocal melody concludes with the lyrics "spir - it says shout, and o - bey the spir - it of the". The piano accompaniment continues with the same rhythmic pattern of eighth notes.

39

40

Lord. Gon - na sing and shout, gon - na

41

let my spir - it out, gon - na sing when the

cresc.

43

spir - it says sing. Gon - na

ff *mf*

ff *mf*

ff *decresc.*

(tacet until measure 53)

46

8 sing when the spir - it says sing, gon - na

mf

48

decresc. sing when the spir - it says sing, gon - na *mp*

decresc. *mp*

decresc.

50

8 sing when the spir - it says sing, and o -

mp *molto rit.* *p* *p*

molto rit.

52

8 bey the spir - it of the Lord.

freely *sfz* *f* *handclap*

sfz *f* *handclap*

SHAKER

freely

CONGAS

freely

DJEMBE

*freely**fp* *f**fp* *f**fp* *f*

GONNA SING

(When the Spirit Says Sing)

SHAKER

Traditional Spiritual
Arranged by ANDY BECK

Rhythmically (♩ = ca. 104)

14

21

25

31

39

44

50

p

mp

mf

ff

cresc.

decresc.

molto rit.

freely

fp

f

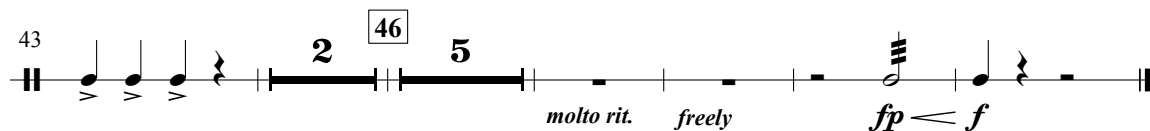
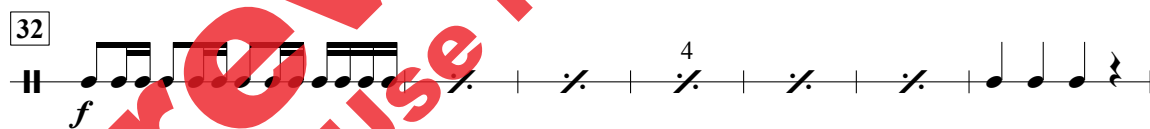
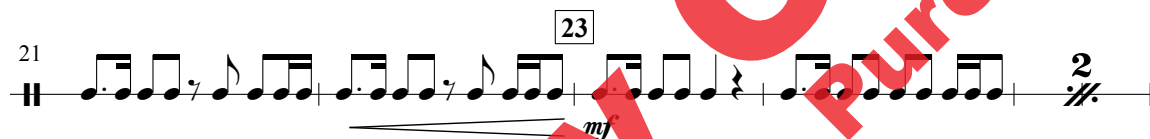
GONNA SING

(When the Spirit Says Sing)

CONGAS

Traditional Spiritual
Arranged by ANDY BECK

Rhythmically (♩ = ca. 104)



Copyright © 2020 by Alfred Music
All Rights Reserved. Printed in USA.

To purchase a full-length performance recording of this piece, go to alfred.com/downloads

GONNA SING

(When the Spirit Says Sing)

DJEMBE

Traditional Spiritual
Arranged by ANDY BECK

Rhythmically (♩ = ca. 104)

4 2 3 7 4

p *cresc.*

14 *mp* 4

21 23 *mf* 2

27

32 *f* 4

39 40 *cresc.*

44 2 46 5 2 *molto rit.* *freely* *fp* *f*

Copyright © 2020 by Alfred Music
All Rights Reserved. Printed in USA.
To purchase a full-length performance recording of this piece, go to alfred.com/downloads