

GONNA SING

(When the Spirit Says Sing)

for 3-part mixed voices, a cappella
with percussion*

Traditional Spiritual
Arranged by **ANDY BECK**

Rhythmically (♩ = ca. 104)

PART I
PART II

SHAKER

p

Gon - na

3

sing when the spir - it says sing, gon - na

5

sing when the spir - it says sing, — gon - na

7

sing when the spir - it says sing, and o -

* Also available for S.S.A. (48426), T.T.B. (48427), and 2-part (48428). Visit alfred.com for digital scores and audio.

Percussion parts are on pages 10-12.

“I’m Going to Sing When the Spirit Says Sing” is an African-American spiritual that comes from the oral tradition, and makes use of a common AAAB form in the lyrics. Just one word changes in the A line between verses, so it was easy for a song-leader to improvise new verses. This flexibility in performance has led to a wonderful proliferation of versions of this beloved song.

Copyright © 2020 by Alfred Music
All Rights Reserved. Printed in USA.

To purchase a full-length performance recording of this piece, go to alfred.com/downloads

9

bey the spir - it of the Lord.

SHAKER

CONGAS

DJEMBE

p play downbeats on lower pitch throughout

11

PARTS I & II

PART III

cresc.

cresc.

cresc.

13

mp

14

Gon - na sing when the spir - it says

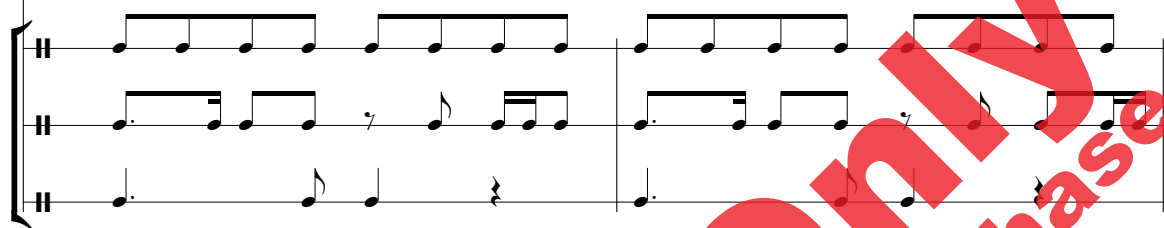
mp

mp

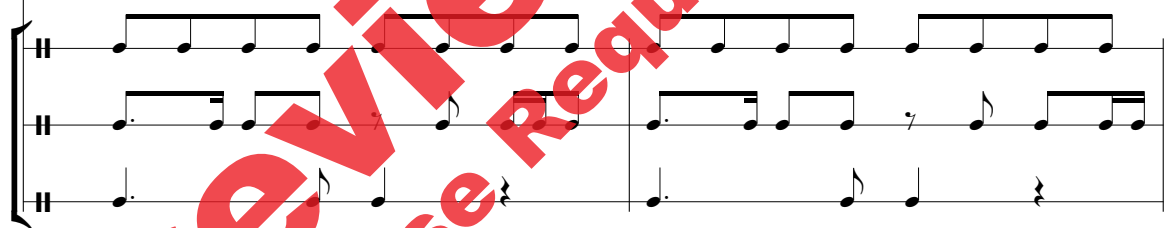
mp

mp

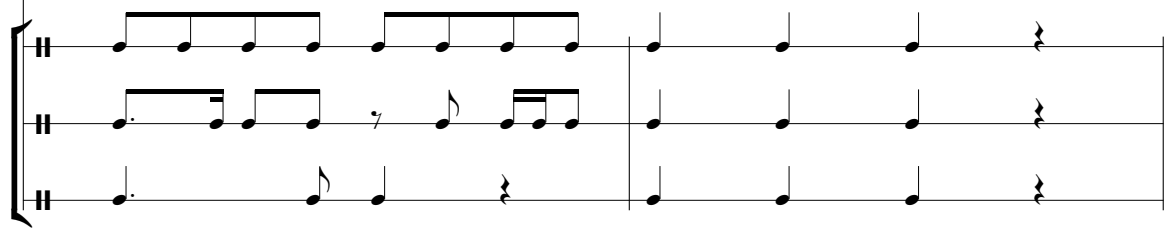
sing, gon - na sing when the spir - it says

Piano accompaniment for measures 15-16. The right hand plays a series of eighth notes, while the left hand plays a steady eighth-note bass line.

sing, — gon - na sing when the spir - it says

Piano accompaniment for measures 17-18. The right hand continues with eighth notes, and the left hand maintains the eighth-note bass line.

sing, and o - bey the spir - it of the

Piano accompaniment for measures 19-20. The right hand plays eighth notes, and the left hand plays a simple eighth-note bass line.

21

mf

Lord.

mf Gon - na

23

handclaps

clap

handclaps

when the spir - it says clap, gon - na

25

handclaps

clap

handclaps

when the spir - it says clap, gon - na

27 *handclaps*

clap when the spir - it says clap, and o -

handclaps

29

bey the spir - it of the Lord.

31 *f* 32

Gon - na shout "Hal - le, hal - le" when the

f

33

spir - it says shout, gon - na shout "Ha - le - lu -



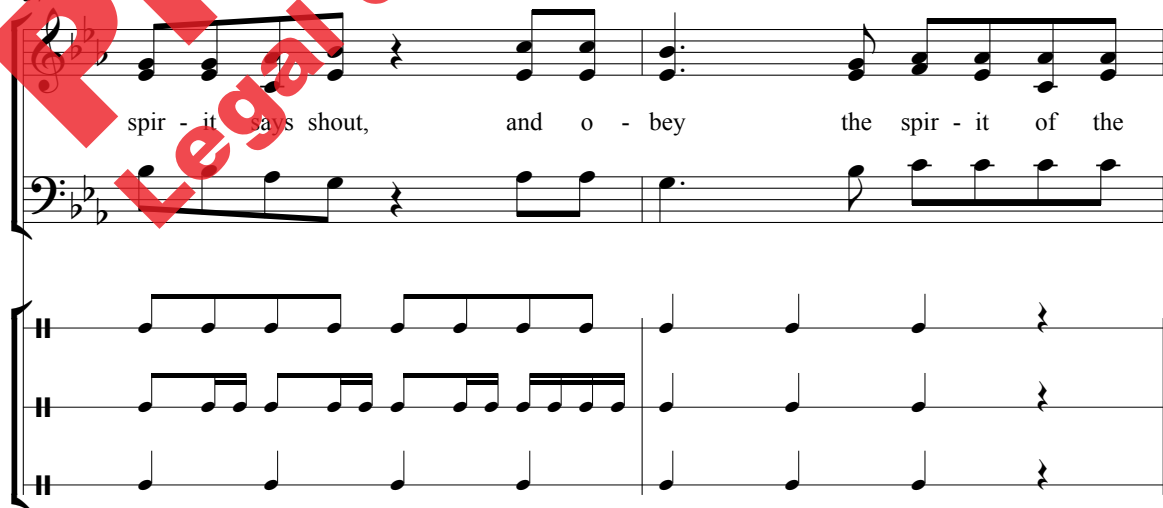
35

jah!" Gon na shout "Hal - le, hal - le" when the



37

spir - it says shout, and o - bey the spir - it of the



Lord. Gon - na sing and shout, gon - na

41 let my spir - it out, gon - na sing when the

cresc.

cresc.

cresc.

cresc.

43 spir - it says sing. Gon-na

ff *mf*

ff *decresc.*

(tacet until measure 53)

(tacet until measure 53)

46

48

decresc.

50

52

freely

SHAKER
freely
 CONGAS
freely
 DJEMBE
freely

GONNA SING

(When the Spirit Says Sing)

SHAKER

Traditional Spiritual
Arranged by ANDY BECK

Rhythmically (♩ = ca. 104)

3

4

p

8

cresc.

14

mp

23

mf

25

2

31

32

f

40

cresc.

44

46

ff *decresc.* *mf* *decresc.*

50

mp *molto rit.* *freely* *fp* *f*

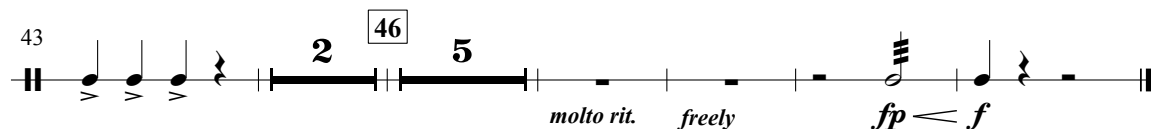
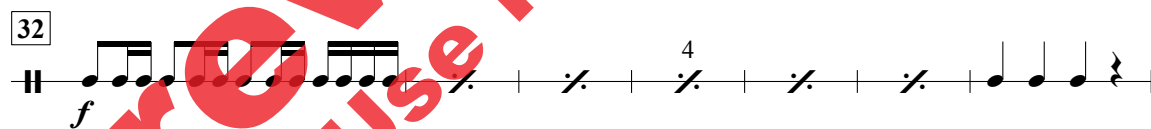
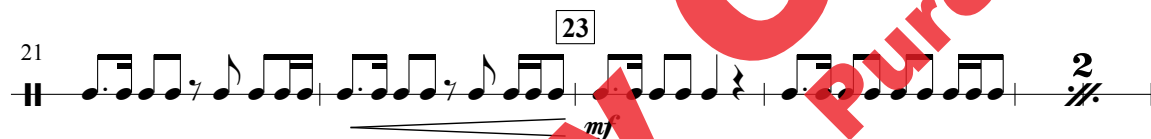
GONNA SING

(When the Spirit Says Sing)

CONGAS

Traditional Spiritual
Arranged by ANDY BECK

Rhythmically (♩ = ca. 104)



Copyright © 2020 by Alfred Music
All Rights Reserved. Printed in USA.

To purchase a full-length performance recording of this piece, go to alfred.com/downloads

GONNA SING

(When the Spirit Says Sing)

DJEMBE

Traditional Spiritual
Arranged by ANDY BECK

Rhythmically (♩ = ca. 104)

4/4

2

3

7

p

cresc.

4

14

mp

4

21

23

mf

27

32

f

4

39

40

cresc.

44

2

46

5

2

molto rit.

freely

fp

f