

Contents

| | | |
|--|--|----|
| Trumpet Tune | Processional | 3 |
| Funeral March / March of the Marionette | Halloween | 4 |
| Jingle Bells / Parade of the Wooden Soldiers | Christmas | 5 |
| Hanukkah, Oh Hanukkah | Hanukkah. | 6 |
| Joy to the World / Deck the Halls. | Christmas | 7 |
| Chester / Battle Hymn of the Republic | Patriotic | 8 |
| España Cañi. | Spanish Paso Doble. | 10 |
| Mama Paquita | Brazilian Folk Song | 11 |
| Sakura, Sakura / Arirang. | Traditional Japanese/Korean Folk Songs | 12 |
| The Entertainer. | Ragtime | 14 |
| Pomp and Circumstance | Graduation. | 15 |
| Mission Possible | Original | 16 |
| Gears | Original | 18 |

Sound Percussion Ensembles features a variety of holiday, patriotic, folk, classical, and original repertoire that can be used for performance throughout the entire school year.

Playing in a group as a percussion ensemble will help you develop independence and rhythmic stability, while providing you with an opportunity to practice with friends. We hope you enjoy *Sound Percussion Ensembles*.

To access practice tracks, go to **SOnline.alfred.com** and enter the product number found on the back cover, over the barcode.

SAKURA, SAKURA / ARIRANG

Traditional Japanese/Korean Folk Songs

"Sakura, Sakura"- TRADITIONAL

Slowly (♩ = 72)

Tune: A, D, E

5

mf

9

13

Brightly (♩ = 132)

17 change to F, G, C

21

17-20

21-23

rall.

25 "Arirang" - TRADITIONAL

f

ff

f

31

mp

35

p

cresc.

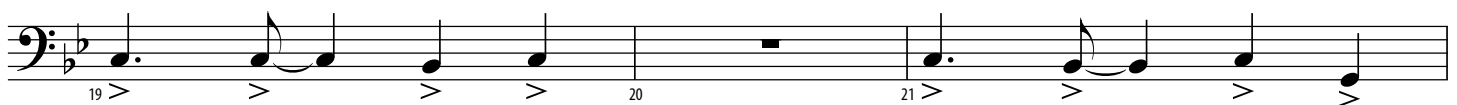
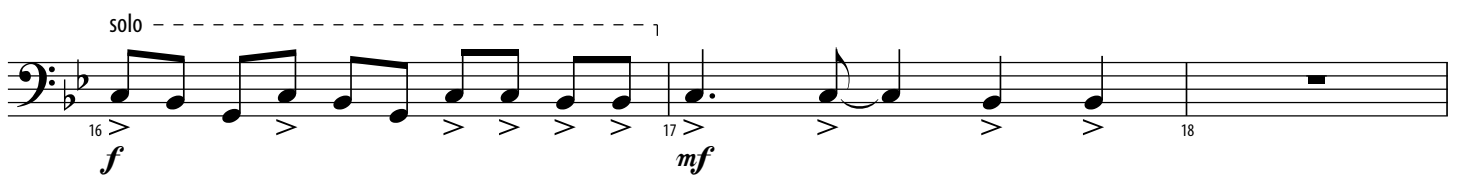
SOUND ADVICE: Always strive for musicality by performing all written dynamics. In addition, use your musical intuition to add more subtle dynamic inflection and contour to your part. Listen within the ensemble to solidify the performance of the accelerando to the end.

MISSION POSSIBLE

Allegro (♩ = 126)

Tune: G, B \flat , C

med.-hard mallets

By Dave Black
and Chris M. Bernotas**SOUND ADVICE:** Remember, all rolls on timpani should be played using single strokes.