

I Remember Clifford

By Benny Golson
Arranged by Erik Morales

INSTRUMENTATION

| | |
|---|---------------|
| Conductor | 1st Trombone |
| 1st E \flat Alto Saxophone | 2nd Trombone |
| 2nd E \flat Alto Saxophone | 3rd Trombone |
| 1st B \flat Tenor Saxophone | Bass Trombone |
| 2nd B \flat Tenor Saxophone | Guitar Chords |
| E \flat Baritone Saxophone | Guitar |
| 1st B \flat Trumpet | Piano |
| 2nd B \flat Trumpet (Opt. Flugelhorn) | Bass |
| 3rd B \flat Trumpet | Drums |
| 4th B \flat Trumpet | |

Optional/Alternate Parts

C Flute
B \flat Clarinet
Vibraphone
Tuba (Doubles Bass)
Horn in F (Doubles 1st Trombone)
1st Baritone Horn T.C./B \flat Tenor Saxophone (Doubles 1st Trombone)
2nd Baritone Horn T.C./B \flat Tenor Saxophone (Doubles 2nd Trombone)
3rd Baritone Horn T.C./B \flat Tenor Saxophone (Doubles 3rd Trombone)

**JAZZ
BAND
SERIES**

NOTES TO THE CONDUCTOR

On June 25th, 1956, the jazz world lost a true icon and innovator of bebop, trumpeter Clifford Brown. He was only 25 when he passed but was able to leave us with a wonderful legacy of recordings.

Composer and tenor saxophonist Benny Golson composed *I Remember Clifford* as a tribute to Clifford Brown in 1957. The two had once performed together in vibraphonist Lionel Hampton's band. As the arranger, I tried to maintain the sentiment of Golson's original melody without too much variation.

Accordingly, the second trumpet (flugelhorn) is featured prominently as a soloist. Eighth notes are to be performed generally straight and much attention should be given to dynamic contrasts as written.

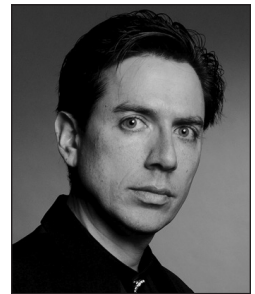
Dynamics are essential to this chart. Every player should strive to be sensitive to balance and blend at all times. Releases should be uniform for all wind sections. Keep in mind that a clean release will make every band sound more mature and polished.

One of the challenges of a slow ballad is maintaining accurate time, forward motion, and a certain amount of energy as well. Regarding intonation, the transparency of a ballad exposes potential pitch issues so each wind player should strive to listen intently and blend.

The double time section at m. 40 can be set up by the drummer subtly providing the double time feel, and the drummer can similarly set up the return to the original ballad tempo.

Enjoy!

—Erik Morales



Erik Morales

Erik Morales began his composing career shortly after graduation from high school in south Florida. He studied composition at Florida International University, and completed his bachelor's degree at the University of Louisiana at Lafayette. Accessible at all levels, the music of Erik Morales has a unique melodic and harmonic vocabulary that appeals to audiences worldwide. His published works encompass a large variety of styles and settings, including works for concert, orchestral, jazz, and chamber ensembles and have been part of featured performances across the globe. Mr. Morales currently teaches and plays trumpet professionally in the New Orleans area, in addition to maintaining an active composing and conducting schedule.

CONDUCTOR
48226S

I REMEMBER CLIFFORD

Composed by Benny Golson
Arranged by Erik Morales

BALLAD ♩ = 60-70 (STRAIGHT 8THS)

1st Eb ALTO SAXOPHONE

2ND Eb ALTO SAXOPHONE

1st Bb TENOR SAXOPHONE

2ND Bb TENOR SAXOPHONE

Eb BARIOTONE SAXOPHONE

1st Bb TRUMPET

2ND Bb TRUMPET (OPT. FLUGELHORN)

3RD Bb TRUMPET

4TH Bb TRUMPET

1st TROMBONE

2ND TROMBONE

3RD TROMBONE

BASS TROMBONE

GIUITAR

PIANO

BASS

DRUMS

W/ BEUGHES THROUGHOUT

SOLO

Legal Use Requires Purchase

© 1957 (Renewed) TIME STEP MUSIC
All Rights Administered by IBBOB MUSIC, INC.
This Arrangement © 2020 TIME STEP MUSIC
All Rights Reserved including Public Performance Used by Permission

CONDUCTOR

ALTO 1

ALTO 2

TENOR 1

TENOR 2

BARI.

TRP. 1

TRP. 2

TRP. 3

TRP. 4

TBN. 1

TBN. 2

TBN. 3

BASS TBN.

GTR.

PNO.

BASS

DRUMS

7 8 9 10 11 12 13 14

Legal Use Only

Requires Purchase

PREVIEW

15

Musical score for the song "I Remember Clifford". The score includes parts for:

- ALTO 1
- ALTO 2
- TENOR 1
- TENOR 2
- BARI.
- TRP. 1
- TRP. 2
- TRP. 3
- TRP. 4
- TBN. 1
- TBN. 2
- TBN. 3
- BASS TBN.
- GTR.
- PNO.
- BASS
- DRUMS

The score is marked with a large red watermark: "Preview Only - Legal Use Requires Purchase".

Chord progression for GTR.:

- 15: E7(b9)7, G7, A7(b9)7, Aø
- 16: B7, Bø7
- 17: C#7, C#7(b9)
- 18: A#7(b9)
- 19: D7(b9)
- 20: G#7(b9), C7(b9)
- 21: F#7, B7(b9)
- 22: G#7, A7(b9)7

Measure numbers 15, 16, 17, 18, 19, 20, 21, 22 are indicated at the bottom of the page.

23

ALTO 1

ALTO 2

TENOR 1

TENOR 2

BARI.

TRP. 1

TRP. 2

TRP. 3

TRP. 4

TBN. 1

TBN. 2

TBN. 3

BASS TBN.

GTR.

PNO.

BASS

DRUMS

23 24 25 26 27 28 29 30 31

Am7(b9) D7(b9) Gm7(b9) C7(b9) Fm7 Eb E7m7 Dm7(b9) G7(b9) Cm7 Cm7(b9) Am7(b9) D7(b9) Gm7 C7 Fm7 Eb7

CONDUCTOR

REMEMBER CLIFFORD

DOUBLE TIME ♩ = 120-140 (SWING 8THS)

32

ALTO 1

ALTO 2

TENOR 1

TENOR 2

BARI.

TRP. 1

TRP. 2

TRP. 3

TRP. 4

TBN. 1

TBN. 2

TBN. 3

BASS TBN.

GTR.

PNO.

BASS

DRUMS

32 33 34 35 36 37 38 39 40

SOLO

Legal Use

Requires Purchase

41

Musical score for CONDUCTOR, featuring parts for ALTO 1, ALTO 2, TENOR 1, TENOR 2, BARI., TRP. 1, TRP. 2, TRP. 3, TRP. 4, TBN. 1, TBN. 2, TBN. 3, BASS TBN., GTR., PNO., BASS, and DRUMS. The score includes various musical notations such as notes, rests, and chord symbols (e.g., F#m7, A7, Bbm7, Bb, C7, C#o7, Dm7, Dm7/C, Ebm7, G7, Abm7, A, Bb7, Bb7, Cm7, Cm7/Bb).



ALTO 1

ALTO 2

TENOR 1

TENOR 2

BARI.

TRP. 1

TRP. 2

TRP. 3

TRP. 4

TEN. 1

TEN. 2

TEN. 3

BASS TEN.

GR. (Guitar)

PNO. (Piano)

BASS

DRUMS

END SOLO

Chord symbols: Bm7(b9), E7(b9), Am7(b9), D7(b9), Gm7, Cm7(b9), Fmaj7, Bbm7, Am7(b9), D7(b9), Gm7(b9), Cm7(b9), Fmaj7, Ebmaj7, Abmaj7

Musical score for "Remember Clifford" featuring vocal and instrumental parts. The score includes parts for Alto 1, Alto 2, Tenor 1, Tenor 2, Baritone, Trumpet 1-4, Trombone 1-3, Bass Trombone, Guitar, Piano, Bass, and Drums. The music is in 4/4 time and features a prominent red watermark: "Preview Only - Legal Use Requires Purchase".

Chord progression for Guitar:

- 57: Am7(b9) D7(b9) Gm7(b9) C7(b9) Fm7 E13 Ebm7
- 58: Dm7(b9) G7(b9) Cm7 Cm7/bb Am7(b9) D7(b9) Gm7 C7 Fm7 Gb7

Measure numbers: 57, 58, 59, 60, 61, 62, 63, 64, 65

66

ALTO 1

ALTO 2

TENOR 1

TENOR 2

BARI.

TRP. 1

TRP. 2

TRP. 3

TRP. 4

TBN. 1

TBN. 2

TBN. 3

BASS TBN.

GTR.

PNO.

BASS

DRUMS

Turn

E7(b9) G7 A7(b9) A0 G7 Bb7 Bb7 Cm7 Cm7(b9) Am7(b9) D7(b9) Gm7(b9) C7(b9) Fm7 G7(b9) Gm7 Gm7

66 67 68 69 70 71 72 73

74

ALTO 1

ALTO 2

TENOR 1

TENOR 2

BARI.

TRP. 1

TRP. 2

TRP. 3

TRP. 4

TBN. 1

TBN. 2

TBN. 3

BASS TBN.

GTR.

PNO.

BASS

DRUMS

rit.

SOLO

F#m7

F#m7

G#11b

G7(b9)

Cm7

Bbm7

Abm7

Gbm7

F#m7

G#7(b9)

Ebm7

74 75 76 77 78 79 80 81 82

