

YOUNG JAZZ ENSEMBLE

Belwin™ JAZZ
a division of Alfred

The Cool One

By Benny Golson
Arranged by Erik Morales

INSTRUMENTATION

Conductor	1st Trombone
C Flute (Optional)	2nd Trombone
1st E♭ Alto Saxophone	3rd Trombone (Optional)
2nd E♭ Alto Saxophone	4th Trombone (Optional)
1st B♭ Tenor Saxophone	Guitar Chords
2nd B♭ Tenor Saxophone	Guitar (Optional)
E♭ Baritone Saxophone (Optional)	Piano
1st B♭ Trumpet	Bass
2nd B♭ Trumpet	Drums
3rd B♭ Trumpet	
4th B♭ Trumpet (Optional)	

Optional/Alternate Parts

B♭ Clarinet
Vibraphone
Tuba (Doubles Bass)
Horn in F (Doubles 1st Trombone)
1st Baritone Horn T.C./B♭ Tenor Saxophone (Doubles 1st Trombone)
2nd Baritone Horn T.C./B♭ Tenor Saxophone (Doubles 2nd Trombone)

NOTES TO THE CONDUCTOR

This arrangement is designed to introduce intermediate players to Latin and swing styles. The challenge is to smoothly transition from straight to swing eighth notes. Composer Benny Golson's genius shines in the chord changes as he uses ii-V7 chord progressions within the "A" section of the form (mm. 17–32). This finally leads the ear to resolution of the piece's tonal center, F major, at the bridge of the form (mm. 33–40). The bridge is also where the arrangement breaks into swing eighths for eight measures and then goes back to straight Latin for the last "A" section.

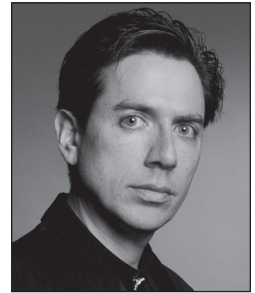
Regarding articulation, the staccatos are short, of course, but not clipped or too short. The *marcato* (or rooftop) accents are detached and accented—think "daht." The overall energy of a Latin groove should have forward motion, meaning the ensemble should not "lay back," but avoid rushing the time—simply maintain accurate time. Direct each wind section player to release together, especially the longer phrases. Doing so will allow the band to sound more mature and polished.

The suggested solos for alto sax and trumpet can be played as written, embellished, or improvised. The chord symbols are provided to assist the soloists. For the sax soli at m. 81, I suggest the section take a few minutes to practice the soli at a slower tempo, then gradually increase the tempo as needed. Keep it tight and with a good blend. As always, accurate dynamics are essential for all.

For this arrangement the key signature has been moved from the original key of G major to F major to suit the ranges of intermediate players.

Recorded in September of 1960, Golson's *The Cool One* is believed to be a follow-up to his commercially successful hit, "Killer Joe," which was recorded earlier that same year, in February 1960. Both tunes sport a similar groove and vibe. *The Cool One* was the first track on the album *Big City Sounds* and featured Golson on tenor sax and Art Farmer on trumpet as soloists. This Golson/Farmer collaboration was also known as "The Jazztet" and featured Curtis Fuller on trombone, McCoy Tyner on piano, Addison Farmer on Bass, and Lex Humphries on drums. I highly recommend the director and all students listen to the original recording, it's a classic! It's interesting to note that the musicians on the album recorded earlier that year entitled *Meet the Jazztet* were different personnel aside from Golson and Farmer.

—Erik Morales (2020)



Erik Morales

Erik Morales began his composing career shortly after graduation from high school in south Florida. He studied composition at Florida International University, and completed his bachelor's degree at the University of Louisiana at Lafayette. Accessible at all levels, the music of Erik Morales has a unique melodic and harmonic vocabulary that appeals to audiences worldwide. His published works encompass a large variety of styles and settings, including works for concert, orchestral, jazz, and chamber ensembles and have been part of featured performances across the globe. Mr. Morales currently teaches and plays trumpet professionally in the New Orleans area, in addition to maintaining an active composing and conducting schedule.

CONDUCTOR
48221S

THE COOL ONE

Composed by Benny Golson
Arranged by Erik Morales

LATIN (STRAIGHT 8THS) ♩ = 152

C FLUTE (OPTIONAL)

1ST Eb ALTO SAXOPHONE

2ND Eb ALTO SAXOPHONE

1ST Bb TENOR SAXOPHONE

2ND Bb TENOR SAXOPHONE

Eb BARITONE SAXOPHONE (OPTIONAL)

1ST Bb TRUMPET

2ND Bb TRUMPET

3RD Bb TRUMPET

4TH Bb TRUMPET (OPTIONAL)

1ST TROMBONE

2ND TROMBONE

3RD TROMBONE (OPTIONAL)

4TH TROMBONE (OPTIONAL)

GIUITAR (OPTIONAL)

PIANO

BASS

DRUMS

CONGELL

TOMS

Hi-Hat w/ FOOT

© 1960 (Renewed) IBBOB MUSIC, INC.
This Arrangement © 2020 IBBOB MUSIC, INC.
All Rights Reserved Used by Permission

mp3
Purchase a full-length
performance recording!
alfred.com/downloads

CONDUCTOR

FLUTE

ALTO 1

ALTO 2

TENOR 1

TENOR 2

BARI.

TRP. 1

TRP. 2

TRP. 3

TRP. 4

TBN. 1

TBN. 2

TBN. 3

TBN. 4

GTR.

PNO.

BASS

DRUMS

9 10 11 12 13 14 15 16

Legal Use Requires Purchase

CR. CHM. RISE (ON BELL) TOMS S.D. TOMS

A417 D7 A417 D7 G417 C7 G417 C7

CONDUCTOR

17

Musical score for CONDUCTOR, featuring parts for FLUTE, ALTO 1, ALTO 2, TENOR 1, TENOR 2, BARI., TRP. 1-4, TBN. 1-4, GTR., PNO., BASS, and DRUMS. The score includes a large red watermark: "Preview Only Requires Purchase".

Instrument parts include:
 FLUTE (Measures 17-24)
 ALTO 1 (Measures 17-24)
 ALTO 2 (Measures 17-24)
 TENOR 1 (Measures 17-24)
 TENOR 2 (Measures 17-24)
 BARI. (Measures 17-24)
 TRP. 1 (Measures 17-24)
 TRP. 2 (Measures 17-24)
 TRP. 3 (Measures 17-24)
 TRP. 4 (Measures 17-24)
 TBN. 1 (Measures 17-24)
 TBN. 2 (Measures 17-24)
 TBN. 3 (Measures 17-24)
 TBN. 4 (Measures 17-24)
 GTR. (Measures 17-24)
 PNO. (Measures 17-24)
 BASS (Measures 17-24)
 DRUMS (Measures 17-24)

Chord progressions for GTR. and PNO. are indicated:
 A Δ 7, D7, A Δ 7, D7, G Δ 7, C7, G Δ 7, C7.

Drum notation includes (ON BELL) and m_2 .

CONDUCTOR

THE COOL ONE

To CODA

FLUTE 25

ALTO 1

ALTO 2

TENOR 1

TENOR 2

BARI. (w/TEN. 4)

TRP. 1

TRP. 2

TRP. 3

TRP. 4

TEN. 1

TEN. 2

TEN. 3

TEN. 4 (w/BARI. SAX)

GTR. A7 D7 A7 D7 G7 C7 G7 C7

PNO.

BASS

DRUMS (ON BELL)

25 26 27 28 29 30 31 32

Legal Use Requires Purchase

CONDUCTOR 33 SWING

THE COOL ONE

FLUTE

ALTO 1

ALTO 2

TENOR 1

TENOR 2

BARI.

TRP. 1

TRP. 2

TRP. 3

TRP. 4

TBN. 1

TBN. 2

TBN. 3

TBN. 4

GTR. *Fmaj7* *A7(b9)* *D7* *G7(b9)* *G7(b9)* *C7* *Fmaj7* *B7*

PNO.

BASS

DRUMS *RIDE SWING!*

33 34 35 36 37 38 39 40



CONDUCTOR

41 LATIN (STRAIGHT 8THS)

Musical score for CONDUCTOR, featuring parts for FLUTE, ALTO 1, ALTO 2, TENOR 1, TENOR 2, BARI., TPT. 1, TPT. 2, TPT. 3, TPT. 4, TBN. 1, TBN. 2, TBN. 3, TBN. 4, GTR., PNO., BASS, and DRUMS. The score includes a large red watermark: "Preview Only - Legal Use Requires Purchase".

Chord symbols for GTR. and PNO. include: A^{mi}7, D7, A^{mi}7, D7, G^{mi}7, C7, G^{mi}7, C7.

Drum notation includes: (ON BELL), 2, 2.

Measure numbers: 41, 42, 43, 44, 45, 46, 47, 48.

FLUTE: SOLO (measures 47-48)

49

Musical score for CONDUCTOR, featuring parts for FLUTE, ALTO 1, ALTO 2, TENOR 1, TENOR 2, BARI., TPT. 1, TPT. 2, TPT. 3, TPT. 4, TBN. 1, TBN. 2, TBN. 3, TBN. 4, GTR., PNO., BASS, and DRUMS. The score includes various musical notations such as notes, rests, and chords, along with a large red watermark reading "Preview Only Requires Purchase".

49 50 51 52 53 54 55 56

57

Musical score for CONDUCTOR, featuring parts for FLUTE, ALTO 1, ALTO 2, TENOR 1, TENOR 2, BARI., TPT. 1-4, TBN. 1-4, GTR., PNO., BASS, and DRUMS. The score includes various musical notations such as notes, rests, and chord symbols (e.g., F#m7, B7, Gm7, A7, Am7, D7, Gm7, C7).

57 58 59 60 61 62 63 64



FLUTE

ALTO 1

ALTO 2

TENOR 1

TENOR 2

BARI.

TRP. 1

TRP. 2

TRP. 3

TRP. 4

TBN. 1

TBN. 2

TBN. 3

TBN. 4

GTR.

PNO.

BASS

DRUMS

SOLO Gtr7

Bm7(b5)

E7(b9)

C#m7(b5)

A#m7(b5)

D7(b9)

G#m7

C15

F#m7

A#m7(b5)

D7

Bm7(b5)

G#m7(b5)

C7

F#m7

B7

RIDE CYM.

R.S.

65 66 67 68 69 70 71 72

CONDUCTOR

73 LATIN (STRAIGHT 8THS)

Musical score for CONDUCTOR, featuring parts for FLUTE, ALTO 1, ALTO 2, TENOR 1, TENOR 2, BARI., TRP. 1, TRP. 2, TRP. 3, TRP. 4, TBN. 1, TBN. 2, TBN. 3, TBN. 4, GTR., PNO., BASS, and DRUMS. The score includes a large red watermark: "Preview Only - Legal Use Requires Purchase".

Chord progressions for GTR. and PNO. include: A#m7, D7, A#m7, D7, G#m7, C7, G#m7, C7.

Chord progressions for TRP. 2 include: B#m7, E7, B#m7, E7, A#m7, D7, A#m7, D7.

Chord progressions for TBN. 1-4 include: m2.

Chord progressions for BARI. include: m2.

Chord progressions for PNO. include: m2.

Chord progressions for DRUMS include: (ON BELL), 2.

Measure numbers: 73, 74, 75, 76, 77, 78, 79, 80.

CONDUCTOR [81] SWING

FLUTE

ALTO 1

ALTO 2

TENOR 1

TENOR 2

BARI.

TPT. 1

TPT. 2

TPT. 3

TPT. 4

TBN. 1

TBN. 2

TBN. 3

TBN. 4

GR.

PNO.

BASS

DRUMS

SOLO

END SOLO

STRAIGHT SWING

F#m7

A#m7(b9)

D7

Bm7(b9)

G#m7(b9)

D7

F#m7

Bb7

RIDE CYM.

81 82 83 84 85 86 87 88

CONDUCTOR

COCA

Musical score for CONDUCTOR, featuring parts for FLUTE, ALTO 1, ALTO 2, TENOR 1, TENOR 2, SAX. (w/TENOR 1), TPT. 1, TPT. 2, TPT. 3, TPT. 4, TBN. 1, TBN. 2, TBN. 3, TBN. 4, GTR., PNO., BASS, and DRUMS. The score includes dynamic markings such as *mf* and *mp*, and performance instructions like "AS WRITTEN" and "CONSELL". Measure numbers 89, 90, 91, 92, 93, 94, and 96 are indicated at the bottom of the page.

Legal Use Requires Purchase Only

CONDUCTOR

FLUTE

ALTO 1

ALTO 2

TENOR 1

TENOR 2

SAX.

TRP. 1

TRP. 2

TRP. 3

TRP. 4

TBN. 1

TBN. 2

TBN. 3

TBN. 4

GTR.

PNO.

BASS

DRUMS

96

97

98

99

100

101

102

Legal Use Requires Purchase

98

(ON BELL)

R.S.

A₇ 17

07

FLUTE

ALTO 1

ALTO 2

TENOR 1

TENOR 2

SAXI.

TRP. 1

TRP. 2

TRP. 3

TRP. 4

TBN. 1

TBN. 2

TBN. 3

TBN. 4

GTR.

PNO.

BASS

DRUMS

100

103

104

105

106

107

108

109

Legal Use Requires Purchase

SOLO FILL

CONSELL

AM7

D7

AM7

D7

D/C

E/b

G/E