

from *Smallfoot*
WONDERFUL LIFE

for 2-part voices and piano
with optional SoundTrax CD*

Performance time: approx. 2:50

Arranged by
LISA DeSPAIN

Words and Music by **WAYNE KIRKPATRICK**
and **KAREY KIRKPATRICK**

Folk rock (♩ = ca. 100)

SOLO

PIANO

F

mp

3

p

sim.

* Also available for S.A.T.B. (47661) and S.A.B.(47662). SoundTrax CD available (47664).

© 2018 WB MUSIC CORP. (ASCAP), REALLY ROTTEN PUBLISHING DESIGNEE (ASCAP),
 WARNER-BARHAM MUSIC LLC (BMI), WARNER-OLIVE MUSIC LLC (ASCAP) and MAD MOTHER MUSIC (BMI)
 All Rights on behalf of REALLY ROTTEN PUBLISHING DESIGNEE (ASCAP) Administered by WB MUSIC CORP. (ASCAP)
 All Rights on behalf of WARNER-BARHAM MUSIC LLC (BMI) Administered by SONGS OF UNIVERSAL, INC. (BMI)
 All Rights on behalf of WARNER-OLIVE MUSIC, LLC (ASCAP) Administered by UNIVERSAL MUSIC GROUP (ASCAP)
 Exclusive Print Rights on behalf of WARNER-BARHAM MUSIC, LLC and
 WARNER-OLIVE MUSIC, LLC (ASCAP) Administered by ALFRED MUSIC
 All Rights on behalf of MAD MOTHER MUSIC (BMI) Administered by CONCORD MUSIC
 All Rights Reserved. Printed in USA.
 Sole Selling Agent for This Arrangement: Alfred Music
 To purchase a full-length performance recording of this piece, go to alfred.com/downloads

5

mp (opt. 8vb)

Take a look _ a-round _ and see _ the world we think _ we know, _ and

7

then look clos - er. There's

9

more to life _ than meets the eye, _ a beau - ty to _ be-hold. _ It's

11

all much big - ger than we know. _

Preview Only
Legal Use Requires Purchase

It's on - ly just be - gin-ning to un - fold,

Dm7 *Bbmaj9*

so let it all un - fold. *(end solo)*

Dm7 *Bbmaj9* *Bb6*

17 *mf*
PART I

Far be - yond all rea - son in your mind,

PART II *mf*

Far be - yond all rea - son in your mind,

F *Dm7*

mf

19

there's a world_ mys - te - ri - ous_ there for you_ to find.

there's a world_ mys - te - ri - ous_ there for you_ to find.

Bbmaj⁹ Bb^{6/9}

21

All these ques - tions that we al - ways have,

All these ques - tions that we al - ways have,

F Dm⁷

23

all we are is cu - ri - ous;_ there's noth - ing wrong_ with that._ So

all we are_ is cu - ri - ous;_ there's noth - ing wrong_ with that._ So

Bbmaj⁹ Bb^{6/9}

25

go 'round ev - 'ry cor - ner,

go 'round ev - 'ry cor - ner,

Dm C/E F Am Bbmaj⁷ Bb⁶

27

search ev - 'ry part of the sky. 'Cause a

search ev - 'ry part of the sky. 'Cause a

Dm C/E F Am Bb

29

life that's full of won - der

life that's full of won - der

Dm C/E F Am Bbmaj⁷ Bb⁶

2nd time to CODA ⊕
(p. 10, m. 50)

2nd time to CODA ⊕
(p. 10, m. 50)

31

is a won - der - ful life.

is a won - der - ful life.

Dm C/E F Am Bbmaj7 Bb6

f

34

Oh.

Oh.

Bb/D C/E Am Bb6

f

36

Whoa.

Whoa.

Dm C/E F Am Bbmaj7 Bb%

38

mf

Dig be-neath the sur - face, find the les-sons there to learn, and

mf

Dig be-neath the sur - face, find the les-sons there to learn, and

F

Dm⁷

mf

40

then dig deep er.

then dig deep er.

Bbmaj⁹

Bb⁹

mf

42

don't leave an - y stone un-turned.

Feed your in - tu - i - tion,

F

Dm⁷

mf

44

Be the seek - er of the truth. _

Be the seek - er of the truth. _

Bbmaj⁹ Bb%

46

Listen when you hear it call-

mp

Oh

Dm Bbmaj⁹

48

mf You know it's call - ing you. _

You know it's call - ing you. _

Dm Bbmaj⁹

D.S. al CODA (p. 4, m. 17)

D.S. al CODA (p. 4, m. 17)

CODA
50 SMALL GROUP *mf* *f*

is a won - der - ful life.

is a won - der - ful life. Ah

is a won - der - ful life. Ah.

CODA
Bb⁶ Dm C/E F Am

52

It's a won - der - ful life.

Whoa.

Whoa.

Bbmaj⁷ Bb⁶ Dm C/E F Am

54



It's a won - der - ful ___ life. _

It's a won - der - ful



Whoa. _____



Whoa. _____

Bb

Bb6

Dm

C/E

F

Am

Bbmaj7

Bb6



57



life. _____

It's a won-der - ful life.



Whoa. _____

It's a won-der - ful life.



Whoa. _____

It's a won-der - ful life.

Dm

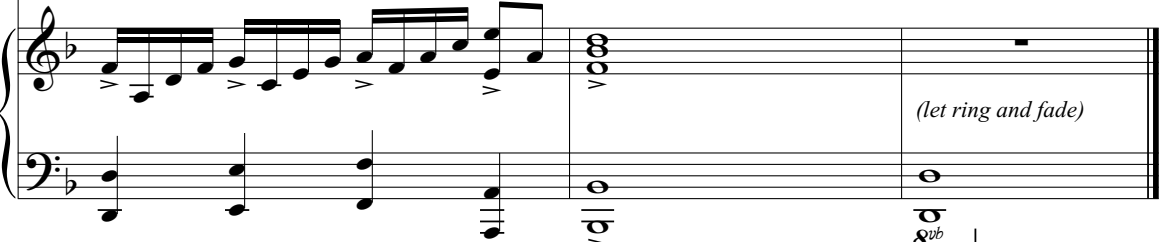
C/E

F

Am

Bb6

N.C.



(let ring and fade)

8^{vb}