

from *Smallfoot*
WONDERFUL LIFE

for S.A.B. voices and piano
 with optional SoundTrax CD*

Performance time: approx. 2:50

Arranged by
LISA DeSPAIN

Words and Music by **WAYNE KIRKPATRICK**
 and **KAREY KIRKPATRICK**

Folk rock (♩ = ca. 100)

SOLO

3

* Also available for S.A.T.B. (47661) and 2-part (47663). SoundTrax CD available (47664).

© 2018 WB MUSIC CORP. (ASCAP), REALLY ROTTEN PUBLISHING DESIGNEE (ASCAP),
 WARNER-BARHAM MUSIC LLC (BMI), WARNER-OLIVE MUSIC LLC (ASCAP) and MAD MOTHER MUSIC (BMI)
 All Rights on behalf of REALLY ROTTEN PUBLISHING DESIGNEE (ASCAP) Administered by WB MUSIC CORP. (ASCAP)
 All Rights on behalf of WARNER-BARHAM MUSIC LLC (BMI) Administered by SONGS OF UNIVERSAL, INC. (BMI)
 All Rights on behalf of WARNER-OLIVE MUSIC, LLC (ASCAP) Administered by UNIVERSAL MUSIC GROUP (ASCAP)
 Exclusive Print Rights on behalf of WARNER-BARHAM MUSIC, LLC and
 WARNER-OLIVE MUSIC, LLC (ASCAP) Administered by ALFRED MUSIC
 All Rights on behalf of MAD MOTHER MUSIC (BMI) Administered by CONCORD MUSIC

All Rights Reserved. Printed in USA.

Sole Selling Agent for This Arrangement: Alfred Music

To purchase a full-length performance recording of this piece, go to alfred.com/downloads

5

mp (opt. 8vb)

Take a look _ a-round _ and see _ the world we think _ we know, _ and

7

then look clos - er. There's

9

more to life _ than meets the eye, _ a beau - ty to _ be-hold. _ It's

11

all much big - ger than we know. _

Preview Only
Legal Use Requires Purchase

It's on - ly just ___ be - gin-ning to ___ un - fold, ___

Dm7 *Bbmaj9*

so let it all ___ un - fold. ___ *(end solo)*

Dm7 *Bbmaj9* *Bb%*

17 *S*

Far be - yond all rea - son in ___ your mind,

mf

F *Dm7*

mf

19

there's a world — mys - te - ri - ous — there for you — to find.

Bbmaj⁹ Bb⁶

21

All these ques - tions that we al ways have,

F Dm⁷

23

all we are is cu - ri - ous; — there's noth - ing wrong — with that. — So

Bbmaj⁹ Bb⁶

25

go 'round ev - 'ry cor - ner,

Dm C/E F Am Bbmaj⁷ Bb⁶

27

search ev - 'ry part of the sky. 'Cause a

Dm C/E F Am Bb

29

2nd time to CODA ⊕
(p. 10, m. 50)

life that's full of won - der

Dm C/E F Am Bbmaj⁷ Bb⁶

2nd time to CODA ⊕
(p. 10, m. 50)

31

is a won - der - ful life.

Detailed description: This system contains measures 31, 32, and 33. The vocal line starts with a quarter rest, followed by a triplet of eighth notes (G4, A4, B4) in measure 31, and continues with a quarter note (C5) in measure 32 and a quarter rest in measure 33. The piano accompaniment features a triplet of eighth notes (G3, A3, B3) in measure 31, followed by a quarter note (C4) in measure 32 and a quarter rest in measure 33. The key signature has one flat (Bb).

Dm C/E F Am Bbmaj7 Bb6

f

Detailed description: This system shows the piano accompaniment for measures 31-33. It includes chord diagrams for Dm, C/E, F, Am, Bbmaj7, and Bb6. The dynamic marking *f* is present. The piano part consists of chords in the right hand and a bass line in the left hand.

34

Oh.

f

Detailed description: This system contains measures 34 and 35. The vocal line has a long note (G4) in measure 34 and a quarter rest in measure 35. The piano accompaniment has a long note (C4) in measure 34 and a quarter rest in measure 35. The dynamic marking *f* is present.

Bb/D C/E F Am Bb6

Detailed description: This system shows the piano accompaniment for measures 34-35. It includes chord diagrams for Bb/D, C/E, F, Am, and Bb6. The piano part consists of chords in the right hand and a bass line in the left hand.

36

Whoa.

Detailed description: This system contains measures 36 and 37. The vocal line has a long note (G4) in measure 36 and a quarter rest in measure 37. The piano accompaniment has a long note (C4) in measure 36 and a quarter rest in measure 37.

Dm C/E F Am Bbmaj7 Bb6

Detailed description: This system shows the piano accompaniment for measures 36-37. It includes chord diagrams for Dm, C/E, F, Am, Bbmaj7, and Bb6. The piano part consists of chords in the right hand and a bass line in the left hand.

38

mf

Dig be-neath the sur - face, find the les-sons there to learn, and

mf

F Dm⁷

40

then dig deep er.

Bbmaj⁹ Bb6

42 ALTO only

Feed your in - tu - i - tion, don't leave an - y stone un-turned.

F Dm⁷

44 ALL

Be the seek - er of the truth. _

Bbmaj⁹ Bb%

46

mp
Oo. _

Lis-ten when _ you hear it call-

Dm Bbmaj⁹

48

You know it's call - ing you. _

- ing. _ You know it's call - ing you. _

Dm Bbmaj⁹

D.S. al CODA
(p. 4, m. 17)

D.S. al CODA
(p. 4, m. 17)

50 CODA
SMALL GROUP *mf* *f*

is a won - der - ful life.

is a won - der - ful life. Ah

CODA
Bb⁶ Dm C/E F Am

f

52

It's a won - der - ful life.

Whoa.

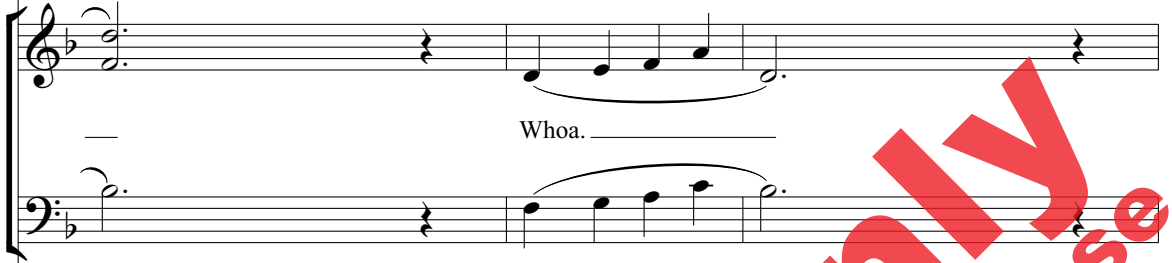
Bbmaj⁷ Bb⁶ Dm C/E F Am

54



It's a won - der - ful ___ life. _

It's a won - der - ful



Whoa. _____

Bb Bb6 Dm C/E F Am Bbmaj7 Eb6



57



life. _____

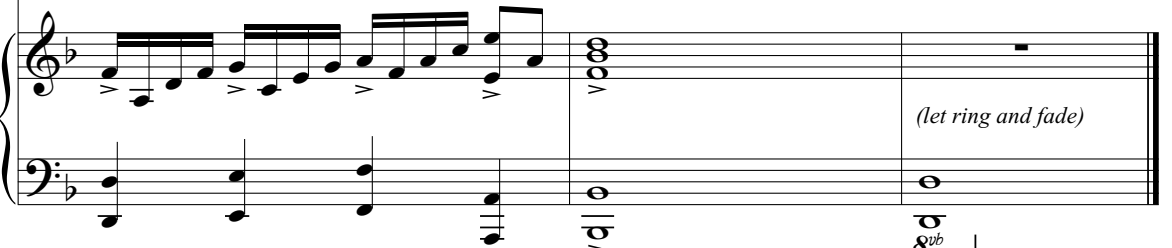
It's a won-der - ful life.



Whoa. _____

It's a won-der - ful life.

Dm C/E F Am Bb6 N.C.



(let ring and fade)

8^{vb}