

# CHILDHOOD CHRISTMAS FAVORITES

Frosty the Snowman • Santa Claus Is Comin' to Town •  
Rudolph, the Red-Nosed Reindeer

for S.A.T.B. divisi voices, a cappella

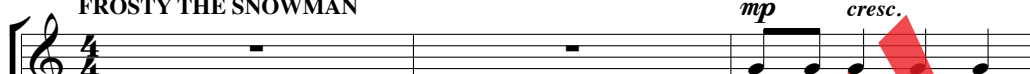
Performance time: approx. 3:15

Arranged by JAMEY RAY

Swing the eighth notes throughout ( $\text{♩} = \text{ca. } 144\text{-}152$ ) ( $\text{♪} = \text{♪♪}$ )

FROSTY THE SNOWMAN

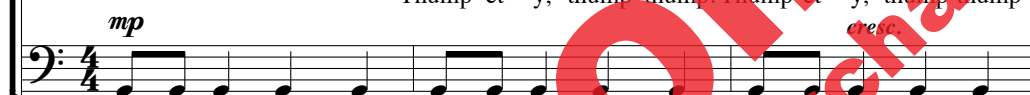
SOPRANO  
ALTO



TENOR



BASS



Thump-et - y, thump thump. Thump-et - y, thump thump. Thump-et - y, thump thump

Swing the eighth notes throughout ( $\text{♩} = \text{ca. } 144\text{-}152$ ) ( $\text{♪} = \text{♪♪}$ )

FROSTY THE SNOWMAN

PIANO  
(for rehearsal  
only)



4

Musical notation for the vocal and piano parts. The music is in 4/4 time. The vocal parts (Soprano, Alto, Tenor, Bass) and piano accompaniment are shown. The lyrics are: "thump. Oh, Frost - y the snow - man was a". Dynamics include *mf*.

This Arrangement © 2019 CHAPPELL & CO., INC., WIXEN MUSIC PUBLISHING, INC.,  
HAVEN GILLESPIE MUSIC, and ST. NICHOLAS MUSIC, INC.  
All Rights Reserved. Printed in USA.

Sole Selling Agent for This Arrangement: Alfred Music

To purchase a full-length performance recording of this piece, go to [alfred.com/downloads](http://alfred.com/downloads)

7 SOLOS

BASS (8vb)  
*mf*

SOPRANO  
*mf*

With a corn - cob pipe and a  
*mp*

jol - ly hap - py soul. \_\_\_\_\_  
*Oo. mp*

jol - ly hap - py soul. \_\_\_\_\_  
*Oo. mp*

jol - ly hap - py soul. \_\_\_\_\_  
*Oo. mp*

*mp*

BOTH

(rejoin section)

but - ton nose \_\_\_\_\_ and two eyes made out of coal.

*mf*

Oh,  
*mf*

Oh,  
*mf*

Oh,  
*mf*

Oh,  
*mf*

*mf*

TENOR (8vb)  
*mf*

13

SOLOS

He was  
Frost - y the snow-man was a fair - y tale they say. —  
Frost - y the snow-man was a fair - y tale they say  
Frost - y the snow-man was a fair - y tale they say. —

17

ALTO  
*mf*

BOTH

T.

(rejoin section)

made of snow but the chil-dren know — how he came to life one day.  
*mp* A.  
Oo. There  
*mp* *mf*  
Oo. There  
*mp* *mf*  
Oo. There  
*mp* *mf*

21 SOPRANO

must have been some mag - ic in that old silk hat they

ALTO

must have been some mag - ic in that old silk hat they

TENOR

must have been some mag - ic in that old silk hat they

BASS

must have been some mag - ic in that old silk hat they

Piano accompaniment for measures 21-24, featuring chords and melodic lines in both hands.

found. For when they placed it on his head — he be -

found. For when they placed it on his head — he be -

found. For when they placed it on his head — he be -

found. For when they placed it on his head — he be -

Piano accompaniment for measures 24-27, featuring chords and melodic lines in both hands.

SANTA CLAUS IS COMIN' TO TOWN 29

27

gan to dance a-round. Oh, you bet-ter watch out, you

gan to dance a-round. Oh, you bet-ter watch out, you

gan to dance a-round. Oh, you bet-ter watch out, you

gan to dance a-round. Oh, you bet-ter watch out, you

*mp*

*mp*

*mp*

*mp*

SANTA CLAUS IS COMIN' TO TOWN

*mp*

30

bet-ter not cry, you bet-ter not pout, I'm tell-ing you why: —

bet-ter not cry, you bet-ter not pout, I'm tell-ing you why: —

bet-ter not cry, you bet-ter not pout, I'm tell-ing you why: —

bet-ter not cry, you bet-ter not pout, I'm tell-ing you why: —

bet-ter not cry, you bet-ter not pout, I'm tell-ing you why: —

33

San - ta Claus is com-in' to town. He's *mf*

San - ta Claus is com-in' to town. He's *mf*

San - ta Claus is com-in' to town. He's *mf*

*Bm bm bm bm bm,* to town. He's

*mf*

37

mak-in' a list and check-in' it twice. He's gon-na find out who's

mak-in' a list and check-in' it twice. He's gon-na find out who's

mak-in' a list and check-in' it twice. He's gon-na find out who's

mak-in' a list and check-in' it twice. He's gon-na find out who's

40

naugh-ty and nice. — San - ta Claus is com-in' to town. —

naugh-ty and nice. — San - ta Claus is com-in' to town. —

naugh-ty and nice. — San - ta Claus is com-in' to town. —

naugh-ty and nice. — *Bm bm bm bm bm,* to town. —

44

45

— And he knows when you're a-wake. —

— And he knows when you're a-wake. —

— He sees you when you're sleep-in'.

— He sees you when you're sleep-in'.

He knows if you've been bad or good, — so be

He knows if you've been bad or good, — so be

He knows if you've been bad or good, — so be

He knows if you've been bad or good, — so be

good for good-ness sake. — Oh, — you bet - ter watch out, — you

good for good-ness sake. — Oh, — you bet - ter watch out, — you

good for good-ness sake. — Oh, — you bet - ter watch out, — you

good for good-ness sake. — Oh, — you bet - ter watch out, — you



54

bet - ter not cry, — you bet - ter not pout, I'm tell - ing you why: —

bet - ter not cry, — you bet - ter not pout, I'm tell - ing you why: —

bet - ter not cry, — you bet - ter not pout, I'm tell - ing you why: —

bet - ter not cry, — you bet - ter not pout, I'm tell - ing you why: —

57

San - ta Claus is com - in' you — know San - ta Claus is

San - ta Claus is com - in', you — know San - ta Claus is

San - ta Claus is com - in', — San - ta Claus is

*Bm bm bm bm bm bm bm bm*

com - in', you \_\_\_ know San - ta Claus is, you know. \_\_\_

com - in', you \_\_\_ know San - ta Claus is, you know. \_\_\_

com - in', \_\_\_ San - ta Claus is, you know. \_\_\_

*bm* *bm* *bm* *bm* *bm* *bm*, you know. \_\_\_

Faster, with a lilt (♩ = ca. 176)

63 RUDOLPH, THE RED-NOSED REINDEER

*mp* opt. SOLO

*poco rit.*

Dash - er and Danc - er and Pranc - er and Vix - en,

*mp* *poco rit.*

Oo *poco rit.*

Oo *poco rit.*

Oo *poco rit.*

Faster, with a lilt (♩ = ca. 176)

RUDOLPH, THE RED-NOSED REINDEER

*mp*

*poco rit.*

67 *a tempo* *poco rit.* (end solo)

Com - et and Cu - pid and Don - ner and Blitz - en,

*a tempo* *poco rit.*

*a tempo* *poco rit.*

*a tempo* *poco rit.*

*a tempo* *poco rit.*

A little slower, steady (♩ = ca. 138-144)

71 ALL *mf*

but do you re - call the most fa - mous rein - deer of

*mf*

But do you re - call the most fa - mous rein - deer of

*mf*

But do you re - call the most fa - mous rein - deer of

*mf*

But do you re - call the most fa - mous rein - deer of

A little slower, steady (♩ = ca. 138-144)

all? \_\_\_\_\_ Ru - doph, the red - nosed rein - deer

all? \_\_\_\_\_ Ru - doph, the red - nosed rein - deer

all? \_\_\_\_\_ Rein - deer.

all? \_\_\_\_\_ Rein - deer.

had a ver - y shin - y nose, and if you ev - er

had a ver - y shin - y nose, and if you ev - er

*mp*  
Doo doo doo doo doo, \_\_\_\_\_

*mp*  
Doo doo, \_\_\_\_\_

80

saw it, you would e - ven say it glows.

saw it, you would e - ven say it glows.

*mf* saw it, you would e - ven say it glows.

*mf* saw it, you would e - ven say it glows.

83

All of the oth - er rein - deer used to laugh and call him

All of the oth - er rein - deer used to laugh and call him

Rein - deer.

Rein - deer.

names. They nev - er let poor Ru - dolph

names. They nev - er let poor Ru - dolph

*mp* Doo doo doo doo doo, Ru - dolph *mf*

*mp* Doo doo, Ru - dolph *mf*

join in an - y rein - deer games. Then one fog - gy

join in an - y rein - deer games. Then one fog - gy

join in an - y rein - deer games. Then one fog - gy

join in an - y rein - deer games. Then one fog - gy

92

Christ - mas Eve, — San - ta came to say: Ru - dolf with your

Christ - mas Eve, — San - ta came to say: Ru - dolf with your

Christ - mas Eve, — San - ta came to say: Ru - dolf with your

Christ - mas Eve, — San - ta came to say: Ru - dolf with your

96

nose so bright, — won't you guide my sleigh to - night? —

nose so bright. — *Doo.*

nose so bright — *Doo.*

nose so bright. — *Doo.*

Then how the rein - deer loved him

Then how the rein - deer loved him, loved him

Then how the rein - deer loved him, loved him

Then how the rein - deer loved him, loved him

as they shout-ed out with glee:

as they shout-ed out with glee:

as they shout-ed out with glee: Ru-dolph, the red - nosed

as they shout-ed out with glee: Ru-dolph, the red - nosed



106

*cresc.*

104

Ru-dolph, the red - nosed rein - deer, you'll go down in  
 Ru-dolph, the red - nosed rein - deer, you'll go down in  
 rein - deer, rein - deer,  
 rein - deer, rein - deer,

*cresc.*

107

his - to - ry,  
 his - to - ry.  
 his - to - ry,  
 his - to - ry,  
 his - to - ry,  
 his - to - ry,  
 you'll go down in his - to ... Frost - y the  
 you'll go down in his - to - ry,

*f*  
*f*  
*f*  
*f*  
*f*  
*f*  
*f*

110

Ru-dolph, the red - nosed rein - deer is com - in' \_\_\_\_\_

\_\_\_\_\_ San - ta Claus is com - in' \_\_\_\_\_

snow - man \_\_\_\_\_ is com - in' \_\_\_\_\_

\_\_\_\_\_ is com - in' \_\_\_\_\_

113

*f* to town! *mf* Doo doo doo.

*f* to town! *mf* Doo doo doo.

*f* to town! *mf* Doo doo doo.

*f* to town! *mf* Doo.