

BANG THE DRUM ALL DAY

for 2-part voices and piano
with optional SoundTrax CD*

Arranged by
SALLY K. ALBRECHT

Words and Music by
TODD RUNDGRÉN

Spirited! (♩ = ca. 138)

SOLO (recorded on the SoundTrax CD)

PART II-B (half of Part II)

VOICES *mf* One, two, one, two, three, four! *mf* Boom boom boom ch - k

PIANO *mf*

4 PART II-A (the other half of Part II) *mf* (tongue click throughout)
Ch - k - ch - k - ch. (click) Ch - k - ch - k - ch. (click)

PART II-B
boom boom boom. Boom boom boom ch - k boom boom boom.

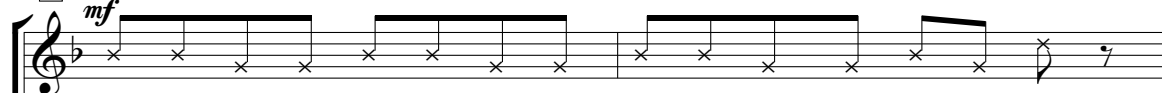
NOTE: All spoken percussion parts may be doubled on small percussion instruments, coffee cans, or plastic containers.

*Also available for 3-part mixed (47646). SoundTrax CD available (47648).

© 1983 WARNER-TAMERLANE PUBLISHING CORP.
This Arrangement © 2019 WARNER-TAMERLANE PUBLISHING CORP.
All Rights Reserved. Printed in USA.

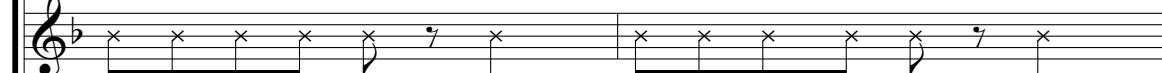
Sole Selling Agent for This Arrangement: Alfred Music
To purchase a full-length performance recording of this piece, go to alfred.com/downloads

7 PART I-B (half of Part I)

mf

Bon - go, bon - go, bon - go, bon - go. Bon - go, bon - go, bon - go, go!

PART II-A



Ch - k - ch - k - ch. (click) Ch - k - ch - k - ch. (click)

PART II-B



Boom boom boom ch - k boom boom boom.



9 PART I-A (the other half of Part I)

mf

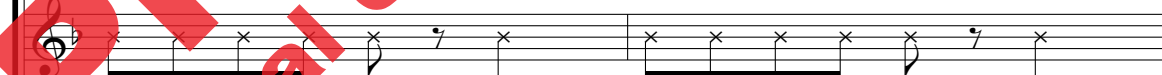
Drum pum pum pum pum. Drum pum pum pum pum.

PART I-B



Bon - go, bon - go, bon - go, bon - go. Bon - go, bon - go, bon - go, go!

PART II-A



Ch - k - ch - k - ch. (click) Ch - k - ch - k - ch. (click)

PART II-B



Boom boom boom ch - k boom boom boom.



11

Drum pum pum pum pum. Drum pum pum pum pum.

Bon - go, bon - go, bon - go, bon - go. Bon - go, bon - go, bon - go, go!

Ch - k - ch - k - ch. (click) Ch - k - ch - k - ch. (click)

Boom boom boom ch - k boom boom boom.

cresc. Drum pum pum pum pum. Drum pum pum pum pum. (rejoin section)

cresc. Bon - go, bon - go, bon - go, bon - go. Bon - go, bon - go, bon - go, go!

cresc. Ch - k - ch - k - ch. (click) Ch - k - ch - k - ch. (click)

cresc. Boom boom boom ch - k boom boom boom.

cresc.

PART I

f

Musical staff for Part I, measure 15. Treble clef, key signature of one flat. The melody starts with a quarter note G4, followed by quarter notes A4, Bb4, C5, and D5. There is a whole rest for the next measure, followed by quarter notes C5, Bb4, A4, and G4.

I don't wan - na work.

I wan - na

PART II

f

Musical staff for Part II, measure 15. Treble clef, key signature of one flat. The melody starts with a quarter note G4, followed by quarter notes A4, Bb4, C5, and D5. There is a whole rest for the next measure, followed by quarter notes C5, Bb4, A4, and G4.

I don't wan - na work.

I wan - na

f

Piano accompaniment for measures 15-16. The right hand plays chords in the treble clef, and the left hand plays a simple bass line in the bass clef. The chords are: G4-Bb4-D5 (m15), G4-A4-Bb4 (m16), G4-A4-Bb4 (m17), G4-A4-Bb4 (m18), G4-A4-Bb4 (m19), G4-A4-Bb4 (m20), G4-A4-Bb4 (m21), G4-A4-Bb4 (m22).

17

Musical staff for Part I, measure 17. Treble clef, key signature of one flat. The melody starts with a quarter note G4, followed by quarter notes A4, Bb4, C5, and D5. There is a whole rest for the next measure, followed by quarter notes C5, Bb4, A4, and G4.

bang on the drum all day!

Musical staff for Part II, measure 17. Treble clef, key signature of one flat. The melody starts with a quarter note G4, followed by quarter notes A4, Bb4, C5, and D5. There is a whole rest for the next measure, followed by quarter notes C5, Bb4, A4, and G4.

boom, boom, boom, boom, boom, boom, boom.

Piano accompaniment for measures 17-18. The right hand plays chords in the treble clef, and the left hand plays a simple bass line in the bass clef. The chords are: G4-Bb4-D5 (m17), G4-A4-Bb4 (m18), G4-A4-Bb4 (m19), G4-A4-Bb4 (m20), G4-A4-Bb4 (m21), G4-A4-Bb4 (m22).

19

Musical staff for Part I, measure 19. Treble clef, key signature of one flat. The melody starts with a quarter note G4, followed by quarter notes A4, Bb4, C5, and D5. There is a whole rest for the next measure, followed by quarter notes C5, Bb4, A4, and G4.

I don't wan - na play.

I just wan - na

Musical staff for Part II, measure 19. Treble clef, key signature of one flat. The melody starts with a quarter note G4, followed by quarter notes A4, Bb4, C5, and D5. There is a whole rest for the next measure, followed by quarter notes C5, Bb4, A4, and G4.

I don't wan - na play.

I just wan - na

Piano accompaniment for measures 19-20. The right hand plays chords in the treble clef, and the left hand plays a simple bass line in the bass clef. The chords are: G4-Bb4-D5 (m19), G4-A4-Bb4 (m20), G4-A4-Bb4 (m21), G4-A4-Bb4 (m22).



21

bang on the drum all day! _____

boom, boom, boom, boom, boom, boom, boom.

23

mp Oo _____ wah

mf Ev - er since I was a ti - ty boy, I

25

oo _____ wop. Wa

don't need no can - dy, I don't need no toy.

27 *mf*

oo. I

I took a stick and an old cof - fee can, I

29 *cresc.*

bang on that thing — till I got blis - ters on my hands. Be - cause

bang on that thing — till I got blis - ters on my hands. Be - cause

31 *f*

I don't wan - na work. I wan - na

I don't wan - na work. I wan - na

33

bang on the drum all day! _____

boom, boom, boom, boom, boom, boom, boom.

35

I don't wan - na play. I just wan - na

I don't wan - na play. I just wan - na

37

bang on the drum all day! _____

boom, boom, boom, boom, boom, boom, boom.

39 PART I-A

f

Drum pum pum pum pum. Drum pum pum pum pum.

PART I-B

Bon - go, bon - go, bon - go, bon - go. Bon - go, bon - go, bon - go, go!

PART II-A

Ch - k - ch - k - ch. (click) Ch - k - ch - k - ch. (click)

PART II-B

Boom boom boom ch - k boom boom boom

Piano accompaniment for measures 39-40.

41

Drum pum pum pum pum. Drum pum pum pum pum.

Bon - go, bon - go, bon - go, bon - go. Bon - go, bon - go, bon - go, go!

Ch - k - ch - k - ch. (click) Ch - k - ch - k - ch. (click)

Boom boom boom ch - k boom boom boom.

Piano accompaniment for measures 41-42.

43 PART I
mp

Oo. wah

PART II *mf*

When I get old - er, they think I'm a fool.

mf

45

oo. wop. Wa

The teach - er told me I should stay at - ter school.

47

oo. *mf* But the

She caught me pound - ing on the desk with my hands, but the

49 *cresc.*

licks were so hot, I made the teach - er wan - na dance. And that's why

licks were so hot, I made the teach - er wan - na dance. And that's why

cresc.

cresc.

51 *f*

I don't wan - na work. I wan - na

I don't wan - na work. I wan - na

f

f

53

bang on the drum all day! —

boom, boom, boom, boom, boom, boom, boom.

55

I don't wan - na play. I just wan - na

I don't wan - na play. I just wan - na

57

bang on the drum all day!

boom, boom, boom, boom, boom, boom, boom.

59

PART II-B
mf

Boom boom boom ch - k boom boom boom.

mf

61 PART I-A

Musical staff for PART I-A, showing a whole rest in the treble clef.

PART I-B

Musical staff for PART I-B, showing a whole rest in the treble clef.

PART II-A

mf

Musical staff for PART II-A, featuring a rhythmic pattern of eighth notes with 'x' marks above them, indicating a specific sound effect.

Ch - k - ch - k - ch. (click) Ch - k - ch - k - ch. (click)

PART II-B

Musical staff for PART II-B, featuring a rhythmic pattern of eighth notes with 'x' marks above them, indicating a specific sound effect.

Boom boom boom ch - k boom boom boom

Piano accompaniment for measures 61-62, showing a bass line in the left hand and a treble line in the right hand.

63

Musical staff for measure 63, showing a whole rest in the treble clef.

mf

Musical staff for measure 63, featuring a rhythmic pattern of eighth notes with 'x' marks above them, indicating a specific sound effect.

Bon - go, bon - go, bon - go, bon - go. Bon - go, bon - go, bon - go, go!

Musical staff for measure 63, featuring a rhythmic pattern of eighth notes with 'x' marks above them, indicating a specific sound effect.

Ch - k ch - k - ch. (click) Ch - k - ch - k - ch. (click)

Musical staff for measure 63, featuring a rhythmic pattern of eighth notes with 'x' marks above them, indicating a specific sound effect.

Boom boom boom ch - k boom boom boom.

Piano accompaniment for measures 63-64, showing a bass line in the left hand and a treble line in the right hand.

65 *mf* *cresc.* (rejoin section)

Drum pum pum pum pum. Drum pum pum pum pum.

Bon - go, bon - go, bon - go, bon - go. Bon - go, bon - go, bon - go, go!

Ch - k - ch - k - ch. (click) Ch - k - ch - k - ch. (click)

Boom boom boom ch - k boom boom boom

cresc.

67 PART I

f

I don't wan - na work. I wan - na

PART II

I don't wan - na work. I wan - na

f

69

bang on the drum all day! _____

boom, boom, boom, boom, boom, boom.

71

I don't wan - na play. I just wan - na

I don't wan - na play. I just wan - na

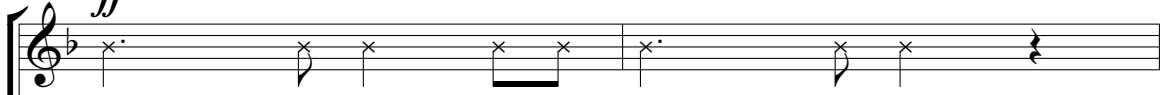
73

bang on the drum all day! _____

boom, boom, boom, boom, boom, boom.

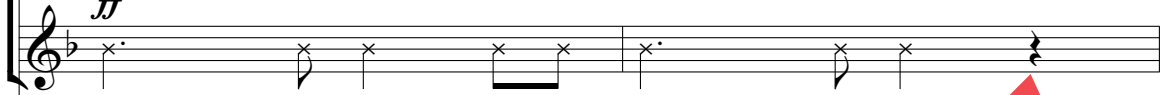
75

ff



Boom boom boom ch - k boom boom boom.

ff



Boom boom boom ch - k boom boom boom.



ff

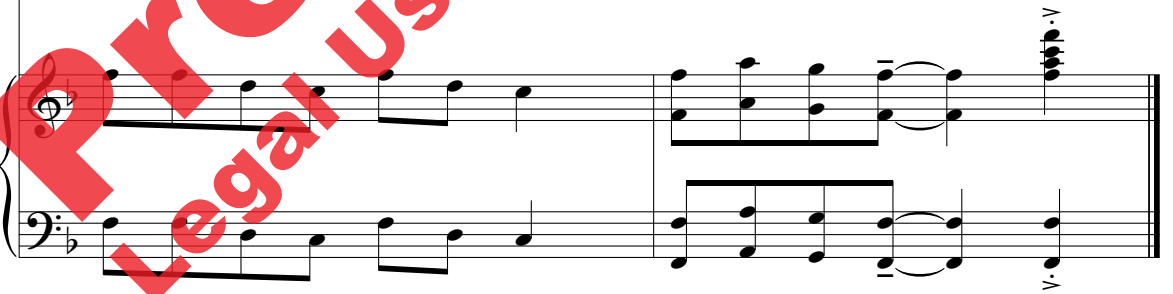
77



Boom boom boom on the drum all day! —



Boom boom boom on the drum all day! —



ff

Preview Only
Legal Use Requires Purchase