

YOU'RE A MEAN ONE, MR. GRINCH

for S.A.T.B. divisi voices, a cappella

Performance time: approx. 2:20

Arranged by
JAMEY RAY

Music by **ALBERT HAGUE**
Lyrics by **DR. SEUSS**

Swing (♩ = ca. 104) (♩♩ = ³♩)

SOPRANO
Ba da da da da da ba da da doo

ALTO
Ba da da da da da ba da da doo

TENOR
Ah — ba da da da ba da da doo

BASS
Ah — ba da da da ba da da ba da da da da

3 **BASS SOLO**

ba da da da da da da da ba da da da da da da. You're a

ah — ba da da da ba da da da da da da.

ba da da da da da da ba da da da da da da.

ba da da da da da da ba da da da da da da.

ah — ba da da ba ba da da da da da da.

© 1966 (Renewed) TED GEISEL PUBLISHING and ALBERT HAGUE
 All Rights Controlled and Administered by EMI ROBBINS CATALOG INC. (Publishing) and ALFRED MUSIC (Print)
 This Arrangement © 2018 EMI ROBBINS CATALOG INC.
 All Rights Reserved. Printed in USA.
 Sole Selling Agent for This Arrangement: Alfred Music

5

even eighths — swing



mean one, Mis - ter Grinch. You real - ly are a

mf

even eighths — swing



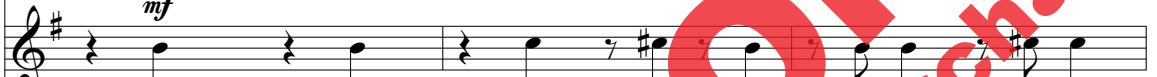
Doo doo doo doo doo doo doo doo

mf



Doo doo doo doo doo doo doo doo

mf



Doo doo doo doo doo doo doo doo

mf



Doo doo doo doo doo doo doo doo doo doo doo doo doo

8



heel. You're as cud - dly as a cac - tus, you're as



doo ah. Doo doo doo doo



doo ah. Doo doo doo doo



doo doo ah. Doo doo doo doo



doo ah. Doo doo doo doo doo

Preview Only
Legal use requires purchase

12 SPOKEN:
You're a bad banana with a ...

10

charm - ing as an eel, — Mis - ter Grinch. ———

mp

doo ah, Mis - ter Grinch. ——— Oo

mp

doo ah, Mis - ter Grinch. ——— Oo

mp

doo doo ah, Mis - ter Grinch. ——— Oo

mp

doo doo ah, Mis - ter Grinch. ——— Oo

13

greas - y black peel. ——— You're a

mf

oh ——— doo doo doo doo doot ah.

mf

oh ——— doo doo doo doo doot ah.

mf

oh ——— doo doo doo doo doot ah.

mf

oh ——— doo doo doo doo doo doo ——— doo doo doo doo doo doot ah.

16

even eighths — *swing*



mon - ster, Mis - ter Grinch. Your heart's an emp - ty

even eighths — *swing*



Doo doo doo doo doo doo doo doo



Doo doo doo doo doo doo doo doo



Doo doo doo doo doo doo doo doo



Doo doo doo doo doo doo doo doo doo doo doo doo doo



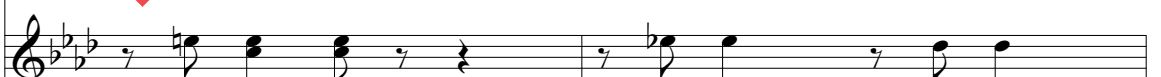
hole. Your brain is full of spi - ders, you've got



doo ah. Doo doo doo



doo ah. Doo doo doo



doo doo ah. Doo doo doo doo



doo ah. Doo doo doo doo doo

Preview Only
Legal Use Requires Purchase

23 SPOKEN:
I wouldn't touch you with a ...

21

gar - lic in your soul, Mis - ter Grinch. doo ah, Mis - ter Grinch. doo doo ah, Mis - ter Grinch. doo doo ah, Mis - ter Grinch. Oo

24

thir - ty - nine - and - a - half - foot pole. oh doo doo oh doo doo oh doo doo oh doo doo doo doo doo doo doo doo doo

26 27 even eighths

You're a foul one, Mis-ter Grinch. You have

doo doo doot ah. Doo doo doo doo doo

doo doo doot ah. Doo doo doo doo doo

doo doo doot ah. Doo doo doo doo doo

doo doo doot ah. Doo doo doo doo doo doo doo

29 *swing*

ter - mites in your smile. You have

swing

doo doo doo ah.

doo doo doo doo doo doo ah.

doo doo doo doo doo ah.

doo doo doo doo doo ah.



31

all the ten-der sweet-ness of a sea-sick croc-o-dile, Mis-ter Grinch. _____

Doo doo doo ah, Mis-ter Grinch. _____

Doo doo doo ah, Mis-ter Grinch. _____

Doo doo doo doo doo doo ah, Mis-ter Grinch. _____

Doo doo doo doo doo doo ah, Mis-ter Grinch. _____

SPOKEN:
Given the choice between
the two of you, I'd take the ...

34

sea - sick croc - o - dile.

Oo oh ba ba da da dwa da da

Oo oh doo doo

Oo oh doo doo

Oo oh doo doo doo doo doo doo doo doo doo

37

38

doo doo doot ah. *f* Ba da da da da da ba da da doo

do doo doot ah. *f* Ba da da da da da ba da da doo

do doo doot ah. *f* Ah — ba da da da ba da da doo

do doo doot ah. *f* Ah — ba da da da ba da da doo

40

42

ba da da da dwa da da ba da da. *mf* You're a vile one, Mis-ter

ah — ba da da da ba da da. *mf* Ew —

ba da da da da da ba da da. *mf* Ew —

ba da da da da da ba da da. *mf* Ew —

ah — ba da da da ba da da. *mf* Doo ew — doo

43

Grinch. You're a nas - ty *was - ty skunk. Your
 ee, a nas - ty *was - ty skunk.
 ee, a nas - ty *was - ty skunk.
 doo ee, a nas - ty *was - ty skunk.

46

heart is full of un-washed socks, your soul is full of gunk, Mis - ter
 Doo doo doo ah, Mis - ter
 Doo doo doo ah, Mis - ter
 Doo doo doo doo doo doo ah, Mis - ter
 Doo doo doo doo doo doo doo ah, Mis - ter

* "wasty" should rhyme with "nasty"

49 SPOKEN:
The three words that best describe you are as follows, and I quote: ...

48

Grinch. _____

Grinch. _____ *mp* 8

Grinch. _____ *mp* 8

Grinch. _____ *mp* 8

Grinch. _____ *mp* 8

Grinch. _____ *mp* 8

52

Stink! Stank! Stunk! *cresc.*

Stink! Stank! *mf* *cresc.* Ba da da da da da ba da da doo *f*

Stink! Stank! *mf* *cresc.* Ba da da da da da ba da da doo *f*

Stink! Stank! *mf* *cresc.* Ah — ba da da da ba da da doo *f*

Stink! Stank! *mf* *cresc.* Ah — ba da da da ba da da doo *f*

55 *mf* 57

ba da da da dwa da da ba da da. You're a mean one, Mis - ter _____

ah _____ ba da da da ba da da.

ba da da da da da ba da da.

ba da da da da da ba da da.

ah _____ ba da da da ba da da.

58 *f*

Grinch. *ff*

mf Doo doo doo doo doo doo doo doo doo doo doo doot. *f* Wah!

mf Doo doo doo doo doo doo doo doo doo doo doo doot. *f* Wah!

mf Doo doo doo doo doo doo doo doo doo doo doo doot. *f* Wah!

mf Doo doo doo doo doo doo doo doo doo doo doo doot. *f* Wah!