

# CHRISTMAS IS COMING

for T.B.B. voices and piano  
with optional SoundTrax CD\*

Traditional English Round  
Arranged, with new Words and Music,  
by **ANDY BECK**

With festivity ( $\text{♩} = \text{ca. } 116$ )

TENOR

BARITONE  
BASS

PIANO

*mf* *f*

Christ - mas is com - ing,

5

*f*

Christ - mas is

Christ - mas is com - ing, Christ - mas is

\* Also available for S.A.T.B. (46564), S.A.B. (46565), and 2-part/S.S.A. (46567).  
SoundTrax CD available (46568).

Copyright © 2018 by Alfred Music  
All Rights Reserved. Printed in USA.

To purchase a full-length performance recording of this piece, go to [alfred.com/downloads](http://alfred.com/downloads)

11

*mf*

9  
com - ing! \_\_\_\_\_ Christ - mas is com - ing, the

*mf*

*mf*

13  
goose is get - ting fat. Please to put a pen - ny in the

*mf*

17  
old man's hat. Please to put a pen - ny in the

*mf*

old man's hat. If you have - n't got a pen - ny, a

\*ha' - pen - ny will do. If you have - n't got a ha' - pen - ny, then

God bless you. If you have - n't got a ha' - pen - ny, then

\* short for "halfpenny"—pronounced "hey-penny"

33

God bless you!

37

39

Christ - mas is com - ing, a

41

time for us to share. Please give a pen - ny if you've

one to \_\_\_\_\_ spare.

Christ - mas is com - ing, the goose is get - ting fat.

Please to put a pen - ny in the old man's \_\_\_\_\_ hat.

Christ - mas is com - ing, the goose is get - ting fat.

57

8 Please to put a pen - ny in the old man's hat. If you

Please to put a pen - ny in the old man's — hat.

61

8 have - n't got a pen - ny, a ha' - pen - ny will do. If you

Please to put a pen - ny in the old man's hat. If you

65

8 have - n't got a ha' - pen - ny, then God bless — you. If you

have - n't got a pen - ny, a ha' - pen - ny will do. If you

69

8  
 have - n't got a ha' - pen - ny, then God bless you.

have - n't got a ha' - pen - ny, then God bless — you. If you

Piano accompaniment for measures 69-72, featuring chords in the right hand and bass notes in the left hand.

73

8  
 God bless

have - n't got a ha' - pen - ny, then God bless —

Piano accompaniment for measures 73-76, featuring chords in the right hand and bass notes in the left hand.

77

8  
 you!

Piano accompaniment for measures 77-80, featuring chords in the right hand and bass notes in the left hand.

81

Christ - mas is com - ing, a time for char - i - ty,

85

kind - ness, good - will, and gen - er - os - i - ty.

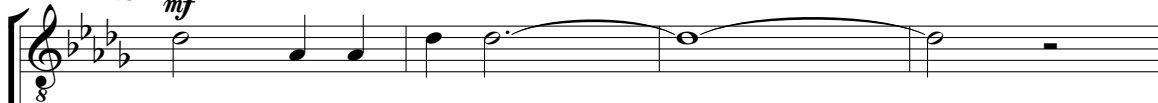
89

*cresc.*



93

TENOR

*mf*

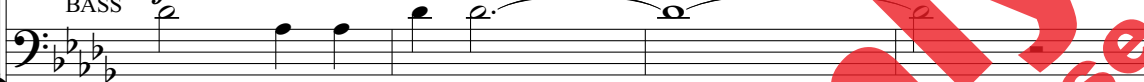
Christ - mas is com - ing, \_\_\_\_\_

BARITONE

*f*

Christ - mas is com - ing, the goose is get - ting fat.

BASS

*mf*

Christ - mas is com - ing, \_\_\_\_\_

97



Christ - mas is com - ing, \_\_\_\_\_



Please to put a pen - ny in the old man's hat.



Christ - mas is com - ing, the goose is get - ting fat.

101

*f*

Christ - mas is com - ing, the goose is get - ting fat.

Please to put a pen - ny in the old man's hat. If you

Please to put a pen - ny in the old man's hat.

105

Please to put a pen - ny in the old man's hat.

have - n't got a pen - ny, a ha' - pen - ny will do. If you

Please to put a pen - ny in the old man's hat. If you

Please to put a pen - ny in the old man's  
 have - n't got a ha' - pen - ny, then God bless  
 have - n't got a pen - ny, a ha' - pen - ny will

hat. If you have - n't got a pen - ny, a  
 you. If you have - n't got a ha' - pen - ny, then  
 do. If you have - n't got a ha' - pen - ny, then

115

ha' - pen - ny will do. If you have - n't got a ha' - pen - ny, then

God bless you. Christ - mas is com - ing,

God bless — you. If you have - n't got a ha' - pen - ny, then

This system contains three vocal staves and a piano accompaniment. The top staff is the vocal line with lyrics. The middle two staves are the bass line. The piano accompaniment is at the bottom, with a grand staff (treble and bass clefs).

119

God bless — you If you have - n't got a ha' - pen - ny, then

Christ - mas is com - ing,

God bless you. Christ - mas is com - ing,

This system contains three vocal staves and a piano accompaniment. The top staff is the vocal line with lyrics. The middle two staves are the bass line. The piano accompaniment is at the bottom, with a grand staff (treble and bass clefs).

123

God bless you! \_\_\_\_\_

God bless \_\_\_\_\_ you! \_\_\_\_\_

God bless \_\_\_\_\_ you! \_\_\_\_\_

127

Christ - mas is com - ing, \_\_\_\_\_

Christ - mas is com - ing, \_\_\_\_\_

131

Christ - mas is  
Christ - mas is  
Christ - mas is com - ing, Christ - mas is

This section contains four staves of music. The top two staves are vocal lines for soprano and bass, both in a key with three flats and a common time signature. The lyrics are 'Christ - mas is' for the first two staves and 'Christ - mas is com - ing, Christ - mas is' for the third. The bottom two staves are piano accompaniment, featuring chords and a melodic line in the bass.

135

com - ing!  
com - ing!  
com - ing!

*cresc.* *ff*  
*cresc.* *ff*  
*cresc.* *ff*

This section contains four staves of music. The top three staves are vocal lines for soprano, alto, and bass, all in a key with three flats and a common time signature. The lyrics are 'com - ing!' for each staff. The first staff has a *cresc.* marking and ends with a *ff* dynamic. The second staff also has a *cresc.* marking and ends with a *ff* dynamic. The third staff has a *cresc.* marking and ends with a *ff* dynamic. The bottom two staves are piano accompaniment, featuring chords and a melodic line in the bass. The first staff has a *cresc.* marking and the second staff has a *ff* marking.