

THULA, THULA NGOANA

(Hush, Hush Child)

for S.S.A. voices and piano
with optional SoundTrax CD*

Traditional Lesotho Lullaby
Arranged, with new Words and Music,
by ANDY BECK

Hushed, but rhythmic ($\text{♩} = \text{ca. } 104$)

PIANO

5

9 SOPRANO I & II *mp*

Thu - la, thu - la ngoa - na. — Thu - la, thu - la ngoa - na. —

ALTO *mp*

Thu - la, thu - la ngoa - na. — Thu - la, thu - la ngoa - na. —

* Also available for 3-part mixed (46553) and 2-part (46555). SoundTrax CD available (46556).

PRONUNCIATION: *TOO-lah, TOO-lah nGWAH-nah.*

Copyright © 2018 by Alfred Music
All Rights Reserved. Printed in USA.

To purchase a full-length performance recording of this piece, go to alfred.com/downloads

13

Thu - la, thu - la ngoa - na. — Thu - la, thu - la ngoa - na. —

Thu - la, thu - la ngoa - na. — Thu - la, thu - la ngoa - na. —

17

Thu - la, thu - la ngoa - na. — Thu - la, thu - la ngoa - na. —

Thu - la, thu - la ngoa - na. — Thu - la, thu - la ngoa - na. —

21

Sleep, lit - tle ba - by. — Hush, lit - tle child.

Sleep, lit - tle ba - by. — Hush, lit - tle child.

25 26

While you're soft - ly sleep - ing,
While you're soft - ly sleep - ing,

While you're soft - ly sleep - ing,
While you're soft - ly sleep - ing,

30

star - light fills the sky, an - gels
'til the break of day, may sweet

star - light fills the sky, an - gels
'til the break of day, may sweet

35

all a round you keep a watch - ful
dreams a round you take your cares a -

all a - round you keep a watch - ful
dreams a - round you take your cares a -

2nd time to CODA \oplus
(p. 7, m. 64)

40

eye. _____
way. _____

eye. _____
way. _____

2nd time to CODA \oplus
(p. 7, m. 64)

(play cue notes first time only)

44

Thu - la, thu - la ngoa - na. Thu - la, thu - la ngoa - na. _____

48

Thu - la, thu - la ngoa - na. Thu - la, thu - la ngoa - na. _____

Thu - la, thu - la ngoa - na. Thu - la, thu - la ngoa - na. _____

Thu - la, thu - la ngoa - na. — Thu - la, thu - la ngoa - na. —

Thu - la, thu - la ngoa - na. — Thu - la, thu - la ngoa - na. —

Sleep, lit - tle ba - by. — Hush, lit - tle child.

Thu - la, thu - la ngoa - na. — Thu - la, thu - la ngoa - na. —

Sleep, lit - tle ba - by. — Hush, lit - tle child.

D.S. al CODA
(p. 4, m. 25)

D.S. al CODA
(p. 4, m. 25)

64 **CODA**
p
 Thu - la, thu - la ngoa - na. Thu - la, thu - la
pp
 Loo loo loo
CODA
p

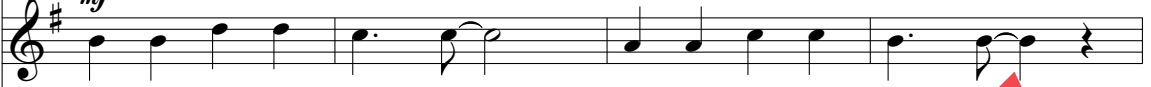
67
pp
 ngoa - na. Loo loo loo
p
 loo. Thu - la, thu - la ngoa - na. Thu - la, thu - la

loo.
 ngoa - na. —
mf

74 SOPRANO I



SOPRANO II

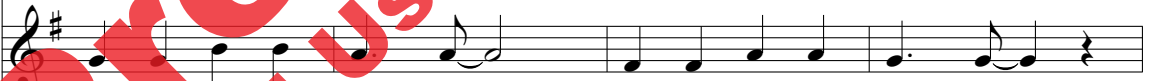
mf

Thu - la, thu - la ngoa - na. — Thu - la, thu - la ngoa - na. —

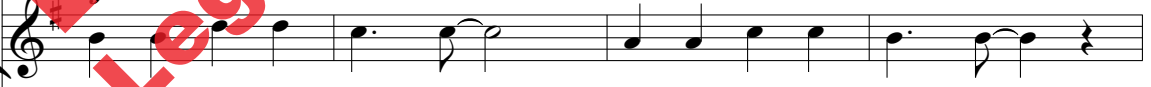
ALTO



78



Thu - la, thu - la ngoa - na. — Thu - la, thu - la ngoa - na. —

mf

Thu - la, thu - la ngoa - na. — Thu - la, thu - la ngoa - na. —



82 *mf*

Thu - la, thu - la ngoa - na. ___ Thu - la, thu - la ngoa - na. ___

Thu - la, thu - la ngoa - na. ___ Thu - la, thu - la ngoa - na. ___

Thu - la, thu - la ngoa - na. ___ Thu - la, thu - la ngoa - na. ___

86

Thu - la, thu - la ngoa - na. ___ Thu - la, thu - la ngoa - na. ___

Sleep, lit - tle ba - by. ___ Hush, lit - tle child.

Thu - la, thu - la ngoa - na. ___ Thu - la, thu - la ngoa - na. ___

Thu - la, thu - la ngoa - na. — Thu - la, thu - la ngoa - na. —

Sleep, lit - tle ba - by. — Hush, lit - tle child.

Sleep, lit - tle ba by. — Hush, lit - tle

Hush, lit - tle

Hush, lit - tle

98 *p* _____ *mp* _____

child. _____ Hush, _____

p _____ *mp* _____

child. _____ Hush, _____

p _____ *mp* _____

child. _____ Hush, _____

p *grad. cresc.*

102 *mf* _____ *f*

hush. _____ *Shh!*

mf _____ *f*

hush. _____ *Shh!*

mf _____ *f*

hush. _____ *Shh!*

f