



EASY TOP OF THE CHARTS PLAYLIST

INSTRUMENTAL SOLOS

Arranged by Bill Galliford
and Ethan Neuburg

Recordings produced by
Dan Warner, Doug Emery
and Lee Levin

mp3 Track

Contents

SONG	ARTIST	PAGE	DEMO	PLAY-ALONG
Tuning Note (A Concert)				1
7 Years	Lukas Graham	2	2	3
Cake By The Ocean	DNCE	4	4	5
Heathens <i>from Suicide Squad: The Album</i>	twenty one pilots	6	6	7
Just Like Fire <i>From the Original Motion Picture Alice Through the Looking Glass</i>	P!nk	8	8	9
Ride	twenty one pilots	9	10	11
Rise	Katy Perry	10	12	13
Setting the World on Fire	Kenny Chesney Feat. P!nk	11	14	15
One Call Away	Charlie Puth	12	16	17
Thy Will	Hillary Scott & The Scott Family	14	18	19
We Don't Talk Anymore	Charlie Puth Feat. Selena Gomez	16	20	21
You'll Be Back <i>Hamilton: An American Musical (Original Broadway Cast Recording)</i>	Jonathan Groff	18	22	23
Starving	Hailee Steinfeld & Grey Feat. Zedd	20	24	25

© 2017 Alfred Music
All Rights Reserved. Printed in USA.

ISBN-10: 1-4706-3858-4
ISBN-13: 978-1-4706-3858-0





Track 2: Demo
Track 3: Play-Along

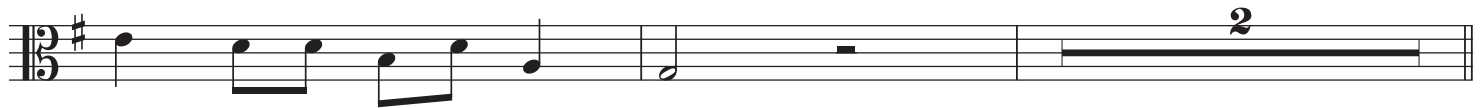
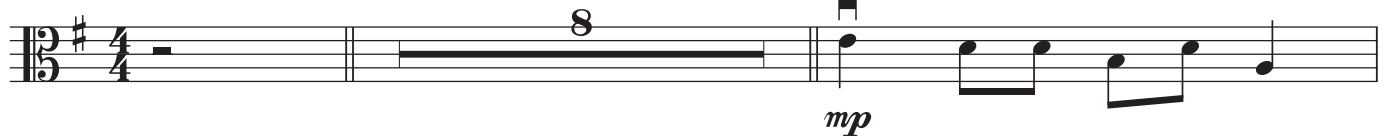
7 YEARS

Words and Music by
LUKAS FORCHHAMMER, MORTEN RISTORP,
STEFAN FORREST, DAVID LABREL,
MORTEN PILEGAARD and CHRISTOPHER BROWN

Moderately (♩ = 120)

With a slight swing (♩ = $\overset{\sim}{\underset{\sim}{\text{♩}}}$)

9 Chorus:



17 Verse:



25 Chorus:



1.



2.

36 Bridge:



mp

7 Years - 2 - 1

© 2015 WB MUSIC CORP., LUKAS GRAHAM SONGS, HALLA!HALLA! PUBLISHING, STEFPUBLISHING, F*** YOU DAVE,
MORTEN PILEGAARD PUB DESIGNEE, WESTSIDE INDEPENDENT MUSIC PUBLISHING LLC, THOU ART THE HUNGER and LATE 80'S MUSIC
All Rights on behalf of itself, LUKAS GRAHAM SONGS, HALLA!HALLA! PUBLISHING,
STEF PUBLISHING, F*** YOU DAVE and MORTEN PILEGAARD PUB DESIGNEE Administered by WB MUSIC CORP.
All Rights on behalf of itself, THOU ART THE HUNGER and LATE 80'S MUSIC Administered by WESTSIDE INDEPENDENT MUSIC PUBLISHING LLC
All Rights Reserved



HEATHENS

Words and Music by
TYLER JOSEPH

Moderate rock (♩ = 91)

3 Chorus:

mp

11

mf

19 Verse:

mp

28 Chorus:

mf