

JAR OF HEARTS

for S.A.T.B. divisi voices , a cappella*

Performance time: approx. 3:45

Arranged by
J.D. FRIZZELL

Words and Music by
**DREW LAWRENCE, CHRISTINA PERRI,
and BARRETT YERETSIAN**

With emotion (♩ = ca. 76)

mp

DUET
(MALE or FEMALE)

You know I can't take one more — step to-wards you —

SOPRANO

ALTO

TENOR

BASS

Oo

3

'cause all that's wait - ing is re - gret.

*Add vocal percussion in a suitable style.

© 2010 WB MUSIC CORP., PIGGY DOG MUSIC,
MISS PERRI LANE PUBLISHING, and PRIMARY WAVE YERETSIAN
All Rights on behalf of itself and PIGGY DOG MUSIC Administered by WB MUSIC CORP.
This Arrangement © 2016 WB MUSIC CORP., PIGGY DOG MUSIC,
MISS PERRI LANE PUBLISHING, and PRIMARY WAVE YERETSIAN
All Rights Reserved. Printed in USA.

Sole Selling Agent for This Arrangement: Alfred Music

15

scars, _____ col-lect-ing your jar of hearts, _____ and tear - ing love a-part. _

dmm _ *dmm* _ *dmm* _ *dmm* _

dmm *dmm* *dmm* *dmm*

dmm *dmm* *dmm* *dmm*

dmm *dmm* *dmm* *dmm* *dmm* *dmm* *dmm* *dmm*

dmm *dmm* *dmm* *dmm* *dmm* *dmm* *dmm* *dmm*

dmm *dmm* *dmm* *dmm* *dmm*

17

_____ You're gon - na catch _____ a _____ cold _____ from the ice in-side your

dmm _ *dmm* _ *dmm* _ *dmm* _

dmm *dmm* *dmm* *dmm*

dmm *dmm* *dmm* *dmm*

dmm *dmm* *dmm* *dmm* *dmm* *dmm* *dmm* *dmm* *dmm*

dmm *dmm* *dmm* *dmm* *dmm* *dmm* *dmm* *dmm* *dmm*

dmm *dmm* *dmm* *dmm*



19

soul, — so don't come back for me. — Who do you think you are? —

dmm — *dmm* — *dmm* — yah bah dah

dmm *dmm* *dmm* yah bah dah

dmm *dmm* *dmm* yah bah dah

dmm *dmm* *dmm* *dmm* *dmm* *dmm* yah bah dah

dmm *dmm* *dmm* *dmm* *dmm* *dmm* yah bah dah

dmm *dmm* *dmm* yah bah dah

21

mp
I hear you ask - ing all a-round

p
ah — dah dah doo doo doo doo

p
ah da doo doo doo doo

p
ah dah dah doo doo doo doo

23

if I am an - y-where to be

doo doo ah

P

doo doo doo doo doo doo doo doo

doo doo doo doo doo doo doo doo

doo doo doo doo doo doo doo doo

25

found. But I have grown too

doo doo doo doo doo doo doo doo

doo doo doo doo doo doo doo doo

doo doo doo doo doo doo doo doo

doo doo doo doo doo doo doo doo

doo doo doo doo doo doo doo doo

27

strong _____ to ev - er fall back___ in your

doo ah _____

doo doo doo doo doo doo doo doo

doo doo doo doo doo doo doo doo

doo doo doo doo doo doo doo doo

29

arms. _____ I learned to live___

mf

yah dah yah dah

mp

doo doo doo zah dah yah dah yah dah

mp

doo doo doo zah dah yah dah yah dah

mp

doo doo doo zah dah yah dah yah dah

mp

31

half a - live, — and now you want me one more —

yah dah yah dah yah dah yah dah

yah dah yah dah yah dah yah dah

yah dah yah dah yah dah yah dah

yah dah yah dah yah dah yah dah

33

— time. — *f* And who do you think you are? —

mf Doo — doo —

yah Doo doo

yah Doo doo

yah Doo doo doo doo

yah Doo doo doo doo

yah dah yah dah dah dah Doo doo

35

Run-ning round leav-ing scars, _____ col-lect-ing your jar of hearts, _

do — do — do — do —

doo doo doo doo doo doo doo doo

doo doo doo doo doo doo doo doo

doo doo doo doo doo doo doo doo

doo doo doo doo doo doo doo doo

37

and tear-ing love a-part. _____ You're gon-na catch a _____

do — do — do — do —

doo doo doo doo doo doo doo doo

doo doo doo doo doo doo doo doo

doo doo doo doo doo doo doo doo

doo doo doo doo doo doo doo doo

39

cold from the ice in-side your soul, so don't come back for me.

doo doo doo doo

doo doo doo doo

doo doo doo doo

doo doo doo doo

doo doo doo doo

41

Who do you think you are?

doo yah bah dah

doo yah bah dah

doo yah bah dah

doo doo yah bah dah

doo doo yah bah dah

doo yah bah dah

ah

ah

ah

ah

f

f

f

f

43



It took so long just to feel al - right, _____ re -

mf



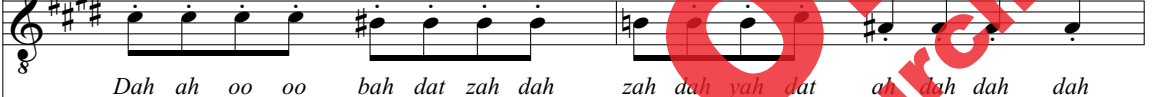
Dah ah oo oo bah dat zah dah zah dah yah dat ah ah ah dah

mf



Dah ah oo oo bah dat zah dah zah dah yah dat ah dah dah dah

mf



Dah ah oo oo bah dat zah dah zah dah yah dat ah dah dah dah

mf



Dah ah oo oo bah dat zah dah zah dah yah dat ah ah ah dah



mem-ber how to put back the light in my eyes. _____ I

dah ah oo oo bah dat zah dah zah dah yah dat ah ah ah dah

dah ah oo oo bah dat zah dah zah dah yah dat ah dah dah dah

dah ah oo oo bah dat zah dah zah dah yah dat ah dah dah dah

dah ah oo oo bah dat zah dah zah dah yah dat ah ah ah dah

47

wish I had missed the first time that we kissed, _____ 'cause

dah ah oo oo bah dat zah dah zah dah yah dat ah ah ah dah

dah ah oo oo bah dat zah dah zah dah yah dat ah dah dah dah

dah ah oo oo bah dat zah dah zah dah yah dat ah dah dah dah

dah ah oo oo bah dat zah dah zah dah yah dat ah ah ah dah

49

you broke all your prom - is - es. _____ And

dah ah oo oo bah dat zah dah zah dah yah dat ah ah ah dah

dah ah oo oo bah dat zah dah zah dah yah dat ah dah dah dah

dah ah oo oo bah dat zah dah zah dah yah dat ah dah dah dah

dah ah oo oo bah dat zah dah zah dah yah dat ah ah ah dah

51

now you're back — you don't get to get me back.

ah ah

ah ah

ah ah

ah ah

53

Who do you think you are? — Run-ning 'round leav - ing

ah

Doo doo doo doo doo doo doo doo

Doo doo doo doo doo doo doo doo

Doo doo doo doo doo doo doo doo

Doo doo doo doo doo doo doo doo

55

scars, col-lect-ing your jar of hearts., and tear - ing love apart.

ah

doo doo doo doo doo doo doo doo

doo doo doo doo doo doo doo doo
doo doo doo doo doo doo doo doo

doo doo doo doo doo doo doo doo

57

You're gon - na catch a cold from the ice in-side your

ah ah

doo doo doo doo doo doo doo doo

doo doo doo doo doo doo doo doo
doo doo doo doo doo doo doo doo

doo doo doo doo doo doo doo doo



59

Musical staff for vocal line at measure 59, featuring a treble clef and a key signature of three sharps (F#, C#, G#).

soul, so don't come back for me. Don't come back at all.

Musical staff for piano accompaniment at measure 59, featuring a treble clef and a key signature of three sharps. The staff contains a whole rest and a half note chord.

ah ah ah oo

Musical staff for vocal line at measure 60, featuring a treble clef and a key signature of three sharps. The staff contains a series of eighth notes.

— doo — doo — doo — doo — ah — ah — ah — ah oo

Musical staff for vocal line at measure 61, featuring a treble clef and a key signature of three sharps. The staff contains a series of eighth notes.

— doo doo — doo doo — ah ah — ah ah oo
doo — doo — doo — doo ah — ah — ah — ah oo

Musical staff for piano accompaniment at measure 61, featuring a bass clef and a key signature of three sharps. The staff contains a series of eighth notes.

doo doo doo doo ah ah ah ah oo

62

Musical staff for vocal line at measure 62, featuring a treble clef and a key signature of three sharps. The staff contains a series of eighth notes.

Who do you think you are? Who do you think you are? —

Musical staff for piano accompaniment at measure 62, featuring a treble clef and a key signature of three sharps. The staff contains a whole rest and a half note chord.

oo oo oo oo

Musical staff for piano accompaniment at measure 62, featuring a treble clef and a key signature of three sharps. The staff contains a whole rest and a half note chord.

oo oo oo oo

Musical staff for piano accompaniment at measure 62, featuring a treble clef and a key signature of three sharps. The staff contains a whole rest and a half note chord.

oo oo oo oo

Musical staff for piano accompaniment at measure 62, featuring a bass clef and a key signature of three sharps. The staff contains a whole rest and a half note chord.

oo oo oo oo