

# BROADWAY, HERE I COME!

for S.S.A. voices and piano  
with optional SoundPax and SoundTrax CD\*

Performance time: approx. 3:50

Arranged by  
**LISA DeSPAIN**

Music and Lyrics by  
**JOE ICONIS**

Moderately (♩ = ca. 108)

PIANO

*mp*

*With pedal*

E♭/B♭ B♭ E♭/B♭ B♭ E♭/B♭ B♭ E♭/B♭

The piano accompaniment for the first system is in 4/4 time. The right hand plays chords in the left hand plays a simple eighth-note bass line. The chords are E♭/B♭, B♭, E♭/B♭, B♭, E♭/B♭, B♭, and E♭/B♭. The tempo is marked 'Moderately' with a quarter note equal to approximately 108 beats per minute. The dynamic is 'mp' (mezzo-piano). The instruction 'With pedal' is written below the bass line.

4 ALTO SOLO *mp* 5

I'm high a-bove the cit-y I'm

SOPRANO I

SOPRANO II

ALTO

B♭ E♭/B♭ B♭ E♭/B♭ B♭

The second system features vocal parts and piano accompaniment. The Alto Solo part begins at measure 4 with the lyrics 'I'm high a-bove the cit-y I'm'. The dynamic is 'mp' (mezzo-piano). A rehearsal mark '5' is placed above the first measure of the vocal line. The piano accompaniment continues with chords B♭, E♭/B♭, B♭, E♭/B♭, and B♭. The vocal parts for Soprano I, Soprano II, and Alto are shown as empty staves.

\* Also available for S.A.T.B. (45535) and S.A.B. (45536). SoundTrax CD available (45538).  
Digital SoundPax available (DIGPX00035) - includes score and set of parts for Violin 1 & 2, Cello, Guitar,  
Bass and Drumset. Visit [alfred.com/choral](http://alfred.com/choral) for more information.

© 2011 MR. JOE ICONIS TUNES  
All Rights Administered by WB MUSIC CORP.  
This Arrangement © 2016 MR. JOE ICONIS TUNES  
All Rights Reserved. Printed in USA.

Sole Selling Agent for This Arrangement: Alfred Music

To purchase a full-length performance recording of this piece, go to [alfred.com/downloads](http://alfred.com/downloads)

7

stand-ing on the ledge. The view from here is pret-ty,

Detailed description: This block contains the vocal line for measures 7 and 8. The melody starts on a half note G4, followed by quarter notes A4, Bb4, and C5. There is a quarter rest, then a half rest, followed by a quarter note G4, quarter notes A4, Bb4, and C5, and a final quarter rest. The lyrics are "stand-ing on the ledge." and "The view from here is pret-ty,".

Eb/Bb Bb Eb/Bb Bb Eb/Bb Bb Eb/Bb

Detailed description: This block contains the piano accompaniment for measures 7 and 8. The right hand plays chords Eb/Bb, Bb, Eb/Bb, Bb, Eb/Bb, Bb, and Eb/Bb. The left hand plays a steady eighth-note bass line: G3, A3, Bb3, C4, D4, Eb4, F4, G4.

10

and I \_\_\_\_\_ step off the edge.

Detailed description: This block contains the vocal line for measure 10. The melody starts with a half rest, followed by quarter notes G4, A4, Bb4, and C5. The lyrics are "and I \_\_\_\_\_ step off the edge.".

Bb Eb/Bb Bb Eb/Bb

Detailed description: This block contains the piano accompaniment for measure 10. The right hand plays chords Bb, Eb/Bb, Bb, and Eb/Bb. The left hand continues the eighth-note bass line: G3, A3, Bb3, C4, D4, Eb4, F4, G4.

12

*mf*

13

And now I'm fall - in', ba - by, through the

*mp*  
Oo oo

*mp*  
Oo oo

Bb Gm Eb(add2)

*mf*

14

sky, through the sky. I'm fall - in', ba - by, through the

oo oo oo

oo oo oo

Bb F Gm Eb(add2)

16

— sky. It's my call - in', — ba - by, don't ya

oo oo oo

oo — oo oo

Bb Dm Eb F(sus)

18

cry, don't ya cry. I'm fall - in' down — through the sky —

oo — Fall — through the sky. —

oo — Fall — through the sky. —

Gm C7 Eb F7(sus4) Bb

— toward the street that I'm from. Oh, — Broad-

- way, here I come.

*mf*  
Doot doo doot doo — doo doo — doo

*mf*  
Doot doo doot doo — doo doo — doo

*mf*  
Bb Eb/Bb Bb7 Eb/Bb Bb F7(sus4)

26 DUET/SMALL GROUP

*mf*

The

SOPRANO I

SOPRANO II

ALTO

*doot doo doot doo doo doo doo*

*doot doo doot doo doo doo doo*

B $\flat$  Eb/B $\flat$  B $\flat$ 7 Eb/B $\flat$  B $\flat$  F $^7$ (sus4)

28

pres-sure, it in-creas-es the clos-er that I get.

G $^6$ /D D G $^6$ /D D G $^6$ /D D G $^6$ /D

31

Vocal staff for measures 31-32. The melody starts with a whole rest, followed by quarter notes G4, A4, B4, C5, B4, A4, G4, and a final quarter rest.

I could al - most go to piec - es,

Piano treble staff for measures 31-32, showing whole rests.

Piano bass staff for measures 31-32, showing whole rests.

Piano accompaniment for measures 31-32. The right hand has chords D, G6/D, D, G6/D. The left hand has a bass line with notes G3, A3, B3, C4, B3, A3, G3.

33

Vocal staff for measures 33-34. The melody starts with a whole rest, followed by quarter notes G4, A4, B4, C5, B4, A4, G4, and a final quarter rest. Measure 34 starts with a quarter rest followed by quarter notes G4, A4, B4, C5.

but I'm not quite there yet.

See, I've been

Piano treble staff for measures 33-34, showing whole rests.

Piano bass staff for measures 33-34, showing whole rests.

Piano accompaniment for measures 33-34. The right hand has chords D, G6/D, D, G6/D, D. The left hand has a bass line with notes G3, A3, B3, C4, B3, A3, G3.

36

brav - ing cra - zy weath - er, \_\_\_\_\_ drown -

*mp*  
Oo \_\_\_\_\_

*mp*  
Oo \_\_\_\_\_

G<sup>6</sup>/D          D          G<sup>6</sup>/D          D

38

- ing out my \_\_\_\_\_ cries. \_\_\_\_\_ I pull my-self to-geth-er. \_\_\_\_\_

oo \_\_\_\_\_ oo \_\_\_\_\_

oo \_\_\_\_\_ oo \_\_\_\_\_

G<sup>6</sup>/D          D          G<sup>6</sup>/D          D          G<sup>6</sup>/D          D          G<sup>6</sup>/D



*mf*  
I'm fo - cused on the prize. I'm fall - in', ba - by, through the

*mf*  
I'm fo - cused on the prize. I'm fall - in', ba - by, through the

D Bm G(add2)  
*mf*

sky, through the sky. I'm fall - in', ba - by, through the

sky, through the sky. I'm fall - in', ba - by, through the

D A Bm G(add2)

46

— sky. It's my call - in', — ba - by, don't ya cry, don't ya cry. I'm fall-

— sky. It's my call - in', ba - by, don't ya cry, don't ya cry. I'm fall-

D F#m G A(sus) Bm E G

49

*mp* 51 (end duet/small group)

It's a tune you can hum.

- in' down through the sky. —

- in' down through the sky. —

A7(sus4) D E

*mp*

52

SOPRANO I

SOPRANO II

ALTO

Oh, \_\_\_ Broad - way, here I come.

Oh, \_\_\_ Broad - way, here I come.

G D G/D D7 G/D

55

Hmm

Hmm

D A7(sus4) D G/D D G/D A7(sus4)

58

Will I re - main \_\_\_ the same \_\_\_ or will I change a lit-tle bit?

Will I re - main \_\_\_ the same \_\_\_ or will I change a lit-tle bit?

Eb Fm/Eb Eb7 Fm/Eb Eb Bb7(sus4) Eb Fm/Eb Eb7 Fm/Eb

61

Will I feel bro - ken or to - tal - ly com -

Will I feel bro - ken or to - tal - ly com -

$E_b$   $B_b7(sus4)$   $E_b$   $Fm/E_b$   $E_b7$   $Fm/E_b$   $E_b$   $B_b7(sus4)$

64

- plete? \_\_\_\_\_ Will I re - tain -

- plete? \_\_\_\_\_ Will I re - tain -

$E_b$   $B_b7(sus4)$   $F$   $B_b/F$   $F7$   $B_b/F$

67

— my name — when I'm the big - gest, huge - est hit? Or will I blend -

— my name — when I'm the big - gest, huge - est hit? Or will I blend -

$F$   $C7(sus4)$   $F$   $B_b/F$   $F7$   $B_b/F$   $F$   $F(sus)$   $F$   $Gm$

SMALL GROUP (SOPRANO)

*f*

SMALL GROUP (ALTO)

But

*f*

But

S. I

S. II

in with the rest of the street? —

A.

in with the rest of the street? —

Fm/Ab Eb/Bb Bb7(sus4)

ev - en though I fear it,

I'm play - ing all my — cards. —

ev - en though I fear it,

I'm play - ing all my — cards. —

*mf*

Doo doot doo doot doo doot doo

doo doot doo doot

*mf*

Doo doot doo doot doo doot doo

doo doot doo doot

G<sup>6</sup>/D

D

G<sup>6</sup>/D

D

G<sup>6</sup>/D

D

G<sup>6</sup>/D

75

*(end small group)*

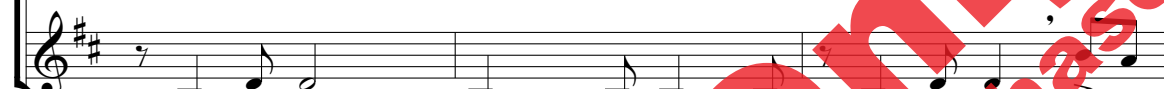
You are gon-na hear it. \_\_\_\_\_

*(end small group)*

You are gon-na hear it. \_\_\_\_\_



doo doot doo doo doot doo doot doo doot doo When I



doo doot doo doo doot doo doot doo doot doo When I

D G<sup>6</sup>/D D G<sup>6</sup>/D D

78

*opt. SOPRANO SOLO*

Yeah, I'm fall -



give 'em my re - gards. I'm fall - in', ba - by, through the



give 'em my re - gards. I'm fall - in', ba - by, through the

G<sup>7</sup> D Bm Gmaj<sup>7</sup>

- in', \_\_\_\_\_ ba - by, fall - in', ba - by, through the  
 sky, through the sky. I'm fall - in', \_\_\_\_\_ ba - by, through the  
 sky, through the sky. I'm fall - in', \_\_\_\_\_ ba - by, through the

D A Bm G7

sky. \_\_\_\_\_ It's my call -  
 \_\_\_\_\_ sky. It's my call - in', \_\_\_\_\_ ba - by, don't ya  
 \_\_\_\_\_ sky. It's my call - in', \_\_\_\_\_ ba - by, don't ya

D F#m G A(sus)

84

- in', my call - in', I'm fall - in' down — through the sky.  
 cry, don't ya cry. I'm fall - in' down — through the sky.  
 cry, don't ya cry. I'm fall - in' down through the sky.

Bm E7 G A7(us4) D

86

No, — no, — oh, —

*mp* And I re-fuse to go — numb. — Oh, — Broad-

*mp* And I re-fuse to go — numb. — Oh, — Broad-

E G



89 *f*

here I come. Broad - way, Broad - way,

*f*

- way, here I come.

Broad - way, here I

*f*

- way, here I come.

Broad - way, here I

D G/D D7 G/D D A7(sus4)

92

here I come!

Broad -

come.

Broad - way, Broad -

come.

Broad - way, Broad -

D G/D D7 G/D D A7(sus4)

94

- way, — Broad - way, here I come. —

- way, — here I come. —

- way, — here I come. —

D G/D D<sup>7</sup> G/D D A<sup>7</sup>(sus<sup>4</sup>)

96

(end solo) 98

*mp* 3 *cresc.*

And the last thing I hear

*mp* 3 *cresc.*

And the last thing I hear

D G/D D<sup>7</sup> G/D D A<sup>7</sup>(sus<sup>4</sup>) E

*mp* *cresc.*

99

as the im - pact grows near, is it a scream or a

as the im - pact grows near, is it a scream or a

D D/F#

102

cheer? Well, nev - er mind. I'll nev - er find

cheer? Well, nev - er mind. I'll nev - er find

G(add9)

104

out, 'cause Broad - way, I am here!

out, 'cause Broad - way, I am here!

E G G/A D

*ff*