

# A TRIBUTE TO JUDY GARLAND

The Trolley Song • On the Atchison, Topeka and the Santa Fe •  
Waiting for the Robert E. Lee

for S.S.A. voices and piano  
with optional SoundPax and SoundTrax CD\*

Performance time: approx. 3:45

Arranged by JOHN LEAVITT

Bright shuffle (♩ = ca. 132-138)

SOPRANO I  
SOPRANO II

ALTO

PIANO

Bright shuffle (♩ = ca. 132-138)

*8va*  
*f*

**5** THE TROLLEY SONG  
*mf*

“Clang, clang, clang,” went the trol - ley.  
“Chug, chug, chug,” went the mo - tor.

“Clang, clang, clang,” went the trol - ley.  
“Chug, chug, chug,” went the mo - tor.

*mf*

\* Also available for S.A.T.B. (45523) and S.A.B. (45524). SoundTrax CD available (45526).  
Digital SoundPax available (DIGPX00032) - includes parts for Guitar, Bass, and Drumset.

Words and Music by Hugh Martin and Ralph Blane  
© 1943 (Renewed) METRO-GOLDWYN-MAYER INC.  
© 1944 (Renewed) EMI FEIST CATALOG INC.

All Rights Controlled and Administered by EMI FEIST CATALOG INC. (Publishing) and ALFRED MUSIC (Print)  
This Arrangement © 2016 EMI FEIST CATALOG INC.

All Rights Reserved. Printed in USA.  
Sole Selling Agent for This Arrangement: Alfred Music

To purchase a full-length performance recording of this piece, go to [alfred.com/downloads](http://alfred.com/downloads)

8

“Ding, ding, ding,” went the  
 “Bump, bump, bump,” went the

“Ding, ding, ding,” went the  
 “Bump, bump, bump,” went the

11

bell. zing, zing,  
 brake. thump, thump,

bell. “Zing, zing,  
 brake. “Thump, thump,

14

zing,” went my heart - strings, from the  
 thump,” went my heart - strings, when he

zing,” went my heart - strings,  
 thump,” went my heart - strings,

17

mo - ment I saw him I fell.  
 smiled I could feel the car shake.

Oo

*f*

20

1. He tipped his

2. *mf*

24

hat and took a seat. He said he

He tipped his hat and took a seat.

28

hoped he had - n't stepped up - on my feet. He asked my

Stepped up - on my feet.

32

name, \_\_\_\_\_ I held my breath. I could - n't

He asked my name, \_\_\_\_\_ I held my breath.

36

\_\_\_\_\_ speak be - cause he scared me half to death. \_\_\_\_\_

\_\_\_\_\_ speak be - cause he scared me half to death. \_\_\_\_\_

40

“Clang, clang, clang,” went the trol - ley.

“Clang, clang, clang,” went the trol - ley.

44

“Ding, ding, ding,” went the bell.

“Ding, ding, ding,” went the bell.

48

“Zing, zing, zing,” went my heart-strings, \_\_\_\_\_ from the

“Zing, zing, zing,” went my heart-strings, \_\_\_\_\_

52

Half Tempo (♩ = ca. 63-66) Swing

mo - ment I saw him I fell.

Oo

Half Tempo (♩ = ca. 63-66) Swing

## 56 ON THE ATCHISON, TOPEKA AND THE SANTA FE

Do yuh hear that whis-tle

Oo

59

down the line. I fig - ure that it's en - gine num - ber

Music by Harry Warren Lyric by Johnny Mercer  
 © 1945(Renewed) EMI FEIST CATALOG INC.  
 Exclusive Print Rights Administered by ALFRED MUSIC  
 This Arrangement © 2016 EMI FEIST CATALOG INC.  
 All Rights Reserved.

61

for - ty nine. — She's the on - ly one that - 'll sound that way, — on the

She's the on - ly one that - 'll sound that way, — on the

64

Atch - i - son, To - pe - ka and the San - ta Fe. — Here she

Atch - i - son, To - pe - ka and the San - ta Fe. —

66

comes!

Oo — oo — oo —

Oo — Oo — oo — oo —

69

Hey, Jim! Yuh bet - ter git the rig! \_\_\_ Oo \_\_\_

Hey, Jim! Yuh bet - ter git the rig! \_\_\_ Oo \_\_\_

72

oo \_\_\_ oo \_\_\_ She's got a list o' pas - sen-gers that's

oo \_\_\_ oo \_\_\_ She's got a list o' pas - sen-gers that's

75 76

pret - ty big. \_\_\_ And they'll all want lifts to Brown's Ho - tel \_\_\_ 'cause

pret - ty big. \_\_\_ And they'll all want lifts to Brown's Ho - tel \_\_\_ 'cause



lots o' them been trav - el - in' for quite a spell. — All the way from Phil - a -

lots o' them been trav - el - in' for quite a spell. — All the way from Phil - a -

del - phi - a. — On The Atch - i - son, To - pe - ka and the San - ta Fe. —

del - phi - a. — On The Atch - i - son, To - pe - ka and the San - ta Fe. —

**Double Time** (♩ = ca. 120)

*Brightly!*

**Double Time** (♩ = ca. 120)

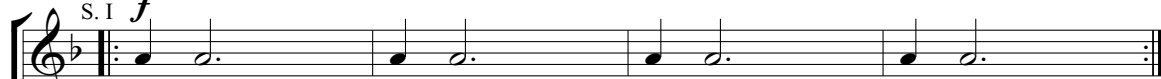
*Brightly!*

*f*

88

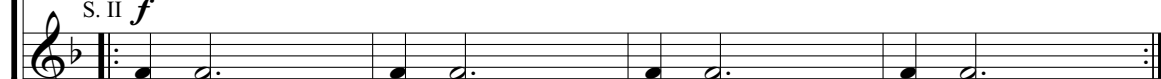


S. I

*f*

Shuff- lin', shuff- lin', shuff- lin', shuff- lin'.

S. II

*f*

Shuff- lin', shuff- lin', shuff- lin', shuff- lin'.

A.



## WAITING FOR THE ROBERT E. LEE

92

*f*

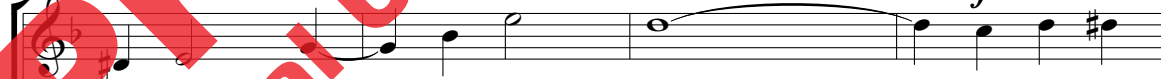
Watch them shuff - lin' a long.

*mf*

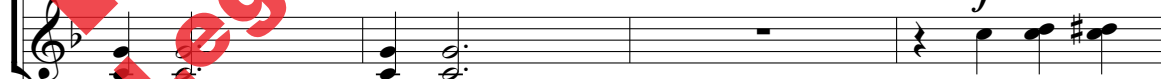
Shuff- lin', shuff- lin', shuff- lin', shuff- lin'.



96

*f*

See them shuff - lin' a - long. Go take your

*f*

shuff lin', shuff- lin'. Go take your



100

S. I  
S. II  
A.

best gal, real pal, go  
best gal, real pal, go

104

down to the lev - ee. I said to the lev - ee! And then  
down to the lev - ee. I said to the lev - ee! And then

108

join that shuff - lin' throng;  
join that shuff - lin' throng;

112

Hear that mu - sic and song; It's sim - ply

Hear that mu - sic and song; It's sim - ply

116

great mate wait - in' on the lev - ee,

great mate wait - in' on the lev - ee,

2nd time to CODA (p. 15, m. 140)

2nd time to CODA (p. 15, m. 140)

120

wait - in' for the Rob - ert E. Lee!

wait - in' for the Rob - ert E. Lee!

124 \*Opt. Dance Break  
hand claps

hand claps

Solo

128

132

\*if omitted, repeat measure 122  
and then D.S. to measure 88.

136

D.S. al CODA  
(p. 11, m. 88)

140 CODA

wait - in' for the Rob - ert E.

wait - in' for the Rob - ert E.

144

A little slower (ad lib.)

Lee!

Lee!

A little slower (ad lib.)