

Colour My World

FOR GUITAR

16 Classic Songs by Chicago

25 or 6
to 4

Old Days

Feelin'
Stronger
Every Day

Does Anybody
Really Know
What Time
It Is?

Colour my world

Beginnings

Free

Qu
61
60

Wishing
You Were
Here

If You
Lea

Saturday
in the
Park

(I've Been)
Searchin'
So Long



Produced by
Alfred Music
P.O. Box 10003
Van Nuys, CA 91410-0003
alfred.com

Printed in USA.

No part of this book shall be reproduced, arranged, adapted, recorded, publicly performed, stored in a retrieval system, or transmitted by any means without written permission from the publisher. In order to comply with copyright laws, please apply for such written permission and/or license by contacting the publisher at alfred.com/permissions.

ISBN-10: 1-4706-3278-0
ISBN-13: 978-1-4706-3278-6

Cover texture image ("Bird's-eye-view of the business district of Chicago") from the Geography and Map Division, Library of Congress, originally accessed at dailyinfographics.eu



Alfred Cares. Contents printed on environmentally responsible paper.

Contents

Title	Album	
<i>25 or 6 to 4</i>	Chicago II	3
<i>Beginnings</i>	Chicago Transit Authority.....	14
<i>Call on Me</i>	Chicago VII.....	18
<i>Colour My World</i>	Chicago II	22
<i>Does Anybody Really Know What Time It Is?</i>	Chicago Transit Authority.....	24
<i>Feelin' Stronger Every Day</i>	Chicago VI.....	30
<i>Free</i>	Chicago III	27
<i>Happy Man</i>	Chicago VII.....	34
<i>If You Leave Me Now</i>	Chicago X.....	36
<i>Just You 'n' Me</i>	Chicago VI.....	40
<i>Make Me Smile</i>	Chicago II	44
<i>Old Days</i>	Chicago VIII.....	49
<i>Questions 67 & 68</i>	Chicago Transit Authority.....	52
<i>Saturday in the Park</i>	Chicago V.....	56
<i>(I've Been) Searchin' So Long</i>	Chicago VII.....	61
<i>Wishing You Were Here</i>	Chicago VII.....	66

25 OR 6 TO 4

Moderately fast ♩ = 146

Words and Music by
ROBERT LAMM

Intro:

Am C/G F#m7(b5) F E

Rhy. Fig. 1

Elec. Gtr. 1 (w/dist.) & Elec. Gtr. 2 (clean-tone)

mf

TAB

7	7	7	7	5	5	5	5	5	4	4	4	4	4	3	3	3	3	2	2	2	0	
5	5	5	5	5	3	3	3	3	3	2	2	2	2	2	1	1	1	1	0	0	0	0

5 Am C/G F#m7(b5) F E end Rhy. Fig. 1

Elec. Gtr. 2 cont. in slashes

TAB

7	7	7	7	7	5	5	5	5	5	4	4	4	4	4	3	3	3	3	2	2	2	0	
5	5	5	5	5	5	3	3	3	3	3	2	2	2	2	2	1	1	1	1	0	0	0	0

Am 3111 5fr. C/G 111 5fr. F#m7(b5) 1333 4fr. Fmaj7 1333 3fr. E 1333 7fr.

Rhy. Fig. 2A

Elec. Gtr. 2

9 Horns

Rhy. Fig. 2

Elec. Gtr. 1

TAB

7	7	7	7	5	5	5	5	4	4	4	4	3	3	3	3	2	2	2	2	0	0	0	0
5	5	5	5	5	3	3	3	3	2	2	2	2	2	1	1	1	1	0	0	0	0	0	0

Am 3111 5fr. C/G 111 5fr. F#m7(b5) 1333 4fr. Fmaj7 1333 3fr. E 1333 7fr.

end Rhy. Fig. 2A

end Rhy. Fig. 2

TAB

7	7	7	7	5	5	5	5	4	4	4	4	3	3	3	3	2	2	2	2	0	0	0	0
5	5	5	5	5	3	3	3	3	2	2	2	2	2	1	1	1	1	0	0	0	0	0	0

Verse:

w/Rhy. Fig. 1 (Elec. Gtr. 1) 2 times, simile



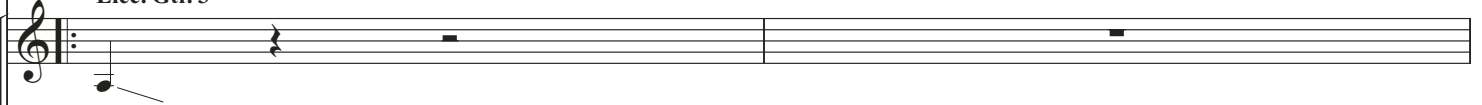
Elec. Gtr. 2



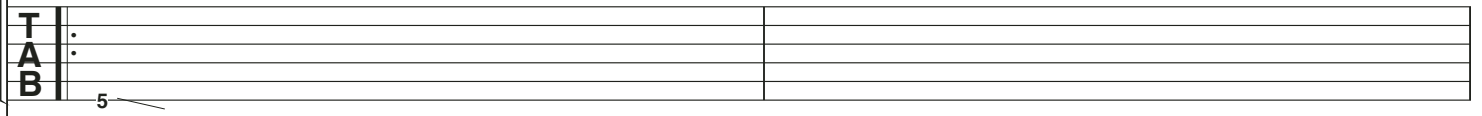
17



Elec. Gtr. 3



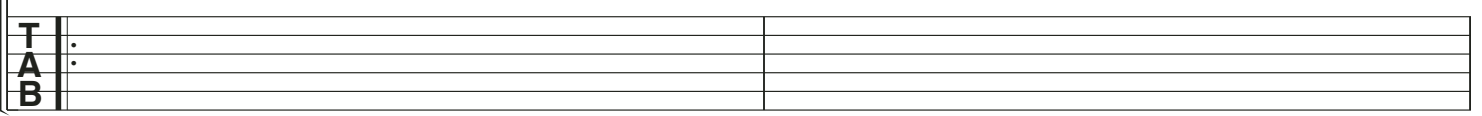
Elec. Gtr. 3 fills this system, 2nd time only



Elec. Gtr. 3



Elec. Gtr. 3 fills this system, 3rd time only



F#m7(b5)



Fmaj7

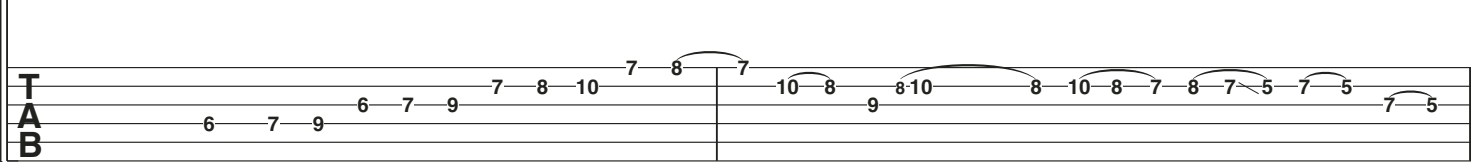
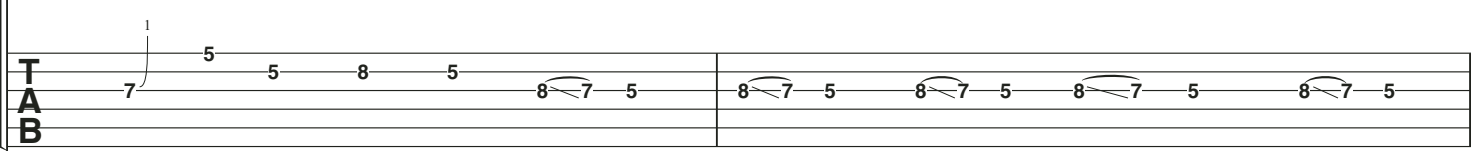


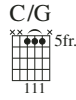
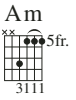
E



19

Horns



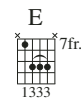


21 *Cont. rhy. simile*

search - ing for some things to say.
 get - ting up to splash my face.
 spin - ning room is sink - ing deep.

TAB 7 7 7 1/2

TAB 7



23

Horns

TAB 5 5 8 5 8 7 5 7 5 7 5 7 5 7 5 3 5 3 5 5 7 7 7 5 3

TAB 7 (7) 5 7 7 5 6 5 3 5 3 5 3 5 3 5 7

Am

C/G

25

Flash - ing lights _____ a - gainst _____ the sky, _____
 Want - ing just _____ to stay _____ a - wake, _____
 Search - ing for _____ some - thing _____ to say, _____

T
A
B

T
A
B

F#m7(b5)

Fmaj7

E

27

Horns

T
A
B

T
A
B