

Contents

Fundamentals of Scale Theory.....	5	The Blues Scale.....	16
The Major Scale.....	5	Using the Blues Scale.....	17
The Sharp Keys.....	6	The Harmonic and Melodic Minor Scales....	17
The Flat Keys.....	8	The Harmonic Minor Scale.....	17
The Natural Minor Scale.....	10	The Melodic Minor Scale.....	18
The Modes of the Major Scale.....	11	Modes of the Harmonic and Melodic Minor Scales.....	19
Ionian.....	11	The Modes of the Harmonic Minor Scale.....	19
Dorian.....	11	The Modes of the Melodic Minor Scale.....	20
Phrygian.....	12	Symmetrical Scales.....	21
Lydian.....	12	The Chromatic Scale.....	21
Mixolydian.....	13	The Whole Tone Scale.....	21
Aeolian.....	13	The Half/Whole Diminished Scale.....	22
Locrian.....	14	The Whole/Half Diminished Scale.....	23
Pentatonic and Blues Scales.....	15		
Parallel.....	15		
Relative.....	15		
Using Pentatonic Scales.....	16		

	A \flat	A	B \flat	B	C	D \flat	D	E \flat	E	F	F \sharp	G
Aeolian	28	48	68	88	108	128	148	168	188	208	228	248
Aeolian $\sharp 11$	37	57	77	97	117	137	157	177	197	217	237	257
Aeolian Major	27	47	67	87	107	127	147	167	187	207	227	247
Augmented	34	54	74	94	114	134	154	174	194	214	234	254
Augmented 9	35	55	75	95	115	135	155	175	195	215	235	255
Augmented $\sharp 9$	39	59	79	99	119	139	159	179	199	219	239	259
Augmented $\flat 9$	35	55	75	95	115	135	155	175	195	215	235	255
Augmented Dominant	38	58	78	98	118	138	158	178	198	218	238	258
Augmented Dominant $\sharp 9$	39	59	79	99	119	139	159	179	199	219	239	259
Augmented Dominant $\flat 9$	38	58	78	98	118	138	158	178	198	218	238	258
Augmented Minor/Major 7	39	59	79	99	119	139	159	179	199	219	239	259
Blues, Diminished	35	55	75	95	115	135	155	175	195	215	235	255
Blues, Major	25	45	65	85	105	125	145	165	185	205	225	245
Blues, Minor	31	51	71	91	111	131	151	171	191	211	231	251

Contents

	A \flat	A	B \flat	B	C	D \flat	D	E \flat	E	F	F \sharp	G
Chromatic	33	53	73	93	113	133	153	173	193	213	233	253
Chromatic Augmented	34	54	74	94	114	134	154	174	194	214	234	254
Diminished, Half/Whole, Symmetrical	34	54	74	94	114	134	154	174	194	214	234	254
Diminished Tritonic	41	61	81	101	121	141	161	181	201	221	241	261
Diminished, Whole/Half, Auxiliary	33	53	73	93	113	133	153	173	193	213	233	253
Dominant $\sharp 9$	42	62	82	102	122	142	162	182	202	222	242	262
Dominant 13	43	63	83	103	123	143	163	183	203	223	243	263
Dominant $\flat 5$	41	61	81	101	121	141	161	181	201	221	241	261
Dominant $\flat 5 \flat 9 \sharp 9$	41	61	81	101	121	141	161	181	201	221	241	261
Dominant $\flat 9 \sharp 11$	43	63	83	103	123	143	163	183	203	223	243	263
Dominant $\flat 9 \sharp 11 \flat 13$	43	63	83	103	123	143	163	183	203	223	243	263
Dominant $\flat 9 \sharp 9$	42	62	82	102	122	142	162	182	202	222	242	262
Dominant $\flat 9 \sharp 9 \flat 13$	42	62	82	102	122	142	162	182	202	222	242	262
Dominant, Bebop	39	59	79	99	119	139	159	179	199	219	239	259
Dorian	29	49	69	89	109	129	149	169	189	209	229	249
Dorian Pentatonic	31	51	71	91	111	131	151	171	191	211	231	251
Dorian, Bebop	40	60	80	100	120	140	160	180	200	220	240	260
Four Semitone Tritone	36	56	76	96	116	136	156	176	196	216	236	256
Harmonic Minor	28	48	68	88	108	128	148	168	188	208	228	248
Hybrid Scales	37	57	77	97	117	137	157	177	197	217	237	257
Ionian Augmented	27	47	67	87	107	127	147	167	187	207	227	247
Jazz Minor	29	49	69	89	109	129	149	169	189	209	229	249
Locrian	30	50	70	90	110	130	150	170	190	210	230	250
Locrian $\sharp 2$	32	52	72	92	112	132	152	172	192	212	232	252
Locrian $\sharp 6$	32	52	72	92	112	132	152	172	192	212	232	252

Contents

	A \flat	A	B \flat	B	C	D \flat	D	E \flat	E	F	F \sharp	G
Lydian	24	44	64	84	104	124	144	164	184	204	224	244
Lydian Pentatonic	26	46	66	86	106	126	146	166	186	206	226	246
Lydian $\sharp 9$	26	46	66	86	106	126	146	166	186	206	226	246
Lydian Augmented	28	48	68	88	108	128	148	168	188	208	228	248
Lydian $\flat 7$	26	46	66	86	106	126	146	166	186	206	226	246
Major	24	44	64	84	104	124	144	164	184	204	224	244
Major and Dominant Scales	24	44	64	84	104	124	144	164	184	204	224	244
Major, Bebop	40	60	80	100	120	140	160	180	200	220	240	260
Melodic Minor	29	49	69	89	109	129	149	169	189	209	229	249
Melodic Minor, Bebop	40	60	80	100	120	140	160	180	200	220	240	260
Minor Scales	28	48	68	88	108	128	148	168	188	208	228	248
Mixolydian	24	44	64	84	104	124	144	164	184	204	224	244
Natural Minor	28	48	68	88	108	128	148	168	188	208	228	248
Pentatonic, Major	25	45	65	85	105	125	145	165	185	205	225	245
Pentatonic, Major 13	25	45	65	85	105	125	145	165	185	205	225	245
Pentatonic, Minor	30	50	70	90	110	130	150	170	190	210	230	250
Pentatonic, Minor 13	30	50	70	90	110	130	150	170	190	210	230	250
Phrygian	29	49	69	89	109	129	149	169	189	209	229	249
Phrygian Major	27	47	67	87	107	127	147	167	187	207	227	247
Phrygian $\flat 6$	32	52	72	92	112	132	152	172	192	212	232	252
Phrygian Pentatonic	31	51	71	91	111	131	151	171	191	211	231	251
Symmetrical Scales	33	53	73	93	113	133	153	173	193	213	233	253
Tetratonic	36	56	76	96	116	136	156	176	196	216	236	256
Three Semitone Tritone	36	56	76	96	116	136	156	176	196	216	236	256
Tritone	37	57	77	97	117	137	157	177	197	217	237	257
Two Semitone Tritone	37	57	77	97	117	137	157	177	197	217	237	257
Whole Tone	33	53	73	93	113	133	153	173	193	213	233	253

Modes of Harmonic and Melodic Minor Scales




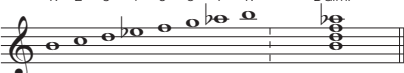
The Modes of the Harmonic Minor Scale

The harmonic minor scale generates six modes. There is no modal name for the harmonic minor scale itself, as there is for the major scale (the major scale is also called the Ionian mode).

The harmonic minor modes are named as alterations of the major scale modes. These names imply a new kind of parallel approach for finding the modes. For instance, Dorian #4 is the Dorian mode with a raised 4th. Since most players are very familiar with the modes of the major scale, altering them to create new modes is a useful tool. Of course, just as with the modes of the major scale, you can take a derivative approach, and simply think in terms of reordering the harmonic minor scale.

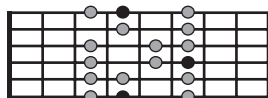
Let's look at the modes of the C Harmonic Minor scale as an example. You will find the name of the mode, the mode, and its scale formula. You will also find the chord that results from stacking 3rds on the root of the mode. Taken together, all of these chords comprise the diatonic chords of the harmonic minor scale and its modes.

Of this group, the Phrygian major mode (also called Phrygian dominant) occurs most frequently (except for, of course, the harmonic minor scale itself). Learn this one first. Practice soloing with each mode by choosing a root from the notes of the harmonic minor scale, then playing that scale over the chord type that goes with that scale degree, such as F Dorian #4 over Fmin7.

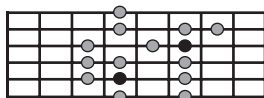
C Harmonic Minor R 2 \flat 3 4 5 \flat 6 7 R	Cmin/Maj7	D Locrian \flat 6 R \flat 2 \flat 3 4 \flat 5 6 \flat 7 R	Dmin7 \flat 5
			
E \flat Ionian Augmented R 2 3 4 \sharp 5 6 7 R	E \flat Maj7 \sharp 5	F Dorian #4 R 2 \flat 3 #4 5 6 \flat 7 R	Fmin7
			
G Phrygian Major R \flat 2 3 4 5 \flat 6 \flat 7 R	G7	A \flat Lydian #9 R #2 3 #4 5 6 7 R	A \flat Maj7
			
B Mixolydian #R #R 2 3 4 5 6 \flat 7 #R	Bdim7		
			

Major and Dominant Scales

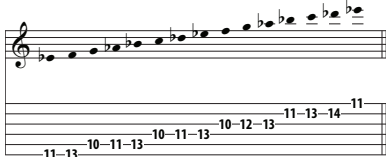
Major/Ionian (1 2 3 4 5 6 7 8)



1 2 3 4 5 6 7 8

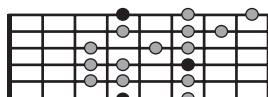


8 9 10 11 12 13 14 15

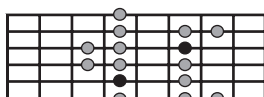


Mixolydian (1 2 3 4 5 6 b7 8)

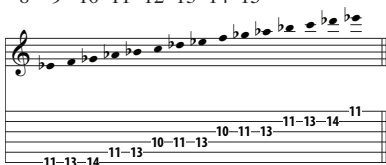
5th mode of the major scale



1 2 3 4 5 6 7 8

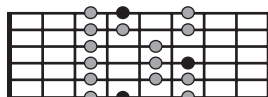


8 9 10 11 12 13 14 15

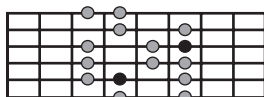


Lydian (1 2 3 #4 5 6 7 8)

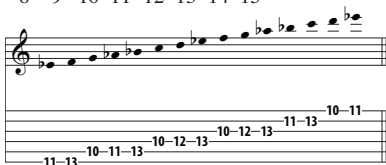
4th mode of the major scale



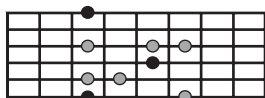
1 2 3 4 5 6 7 8



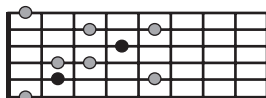
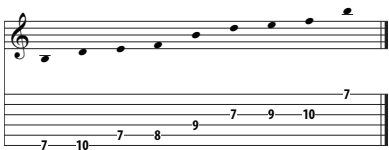
8 9 10 11 12 13 14 15



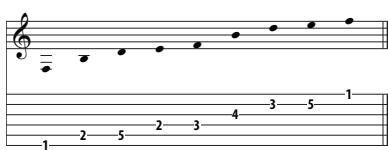
Diminished Tritonic (1 \flat 3 4 \flat 5 8)



5 6 7 8 9 10 11 12

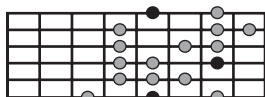


1 2 3 4 5 6 7 8

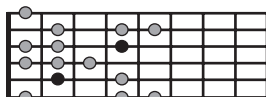


B

Dominant \flat 5 (1 2 3 4 \flat 5 6 \flat 7 8)



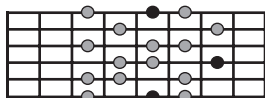
3 4 5 6 7 8 9 10



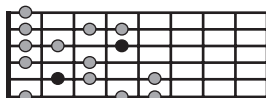
1 2 3 4 5 6 7 8



Dominant \flat 5 \flat 9 \sharp 9 (1 \flat 2 \flat 3 \flat 4 \flat 5 6 \flat 7 8)



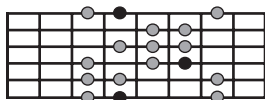
8 9 10 11 12 13 14 15



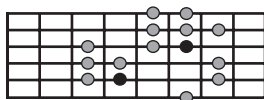
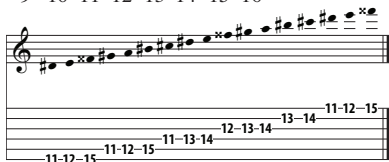
1 2 3 4 5 6 7 8



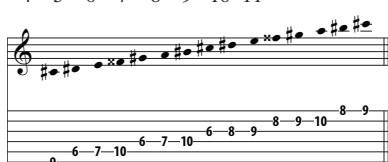
Augmented #9 (1 #2 3 4 #5 6 7 8)



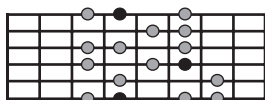
9 10 11 12 13 14 15 16



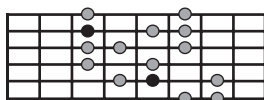
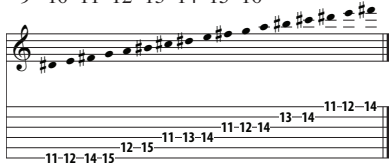
4 5 6 7 8 9 10 11



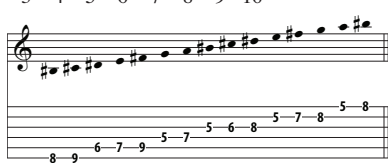
Augmented Minor/Major 7 (1 2 b3 4 #5 6 7 8)



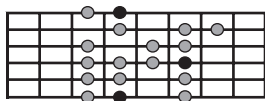
9 10 11 12 13 14 15 16



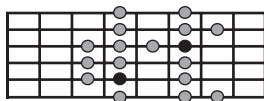
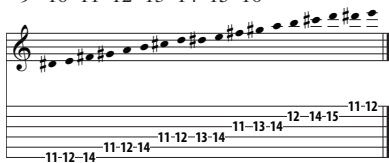
3 4 5 6 7 8 9 10



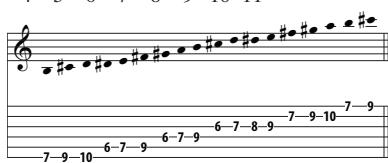
Bebop Dominant (1 2 3 4 5 6 b7 7 8)



9 10 11 12 13 14 15 16



4 5 6 7 8 9 10 11



E