

Contents

Choosing a Ukulele to Use with This Book	5	Pickup Measures	39
Book 1 Review	7	<i>A-Tisket, A-Tasket</i>	39
<i>All the Notes I Know So Far</i>	11	<i>Tom Dooley</i>	41
<i>This Is an Octave</i>	11	Eighth Notes	43
Largo	13	<i>Jammin' with Eighth Notes</i>	43
<i>Largo</i>	13	<i>Go Tell Aunt Rhody</i>	45
Dotted Half Notes & $\frac{3}{4}$ Time	15	<i>Love Somebody (Extended Version)</i>	47
<i>Three Is for Me!</i>	15	<i>Clementine</i>	48
<i>The Farmer in the Dell</i>	17	Dotted Quarter Notes	51
<i>Beautiful Brown Eyes</i>	19	<i>Counting Dotted Quarter Notes</i>	51
Introducing Common Time	21	<i>Cockles and Mussels</i>	53
<i>Old MacDonald Had a Farm</i>	21	Dynamics	55
Introducing B-Flat	23	<i>Echo Rock</i>	55
<i>Aura Lee</i>	23	<i>The Streets of Laredo</i>	57
<i>Three-String Boogie</i>	25	The Down-and-Up-Stroke	59
Tempo Signs	27	The Fermata	61
<i>Three-Tempo Rock</i>	27	<i>Michael, Row the Boat Ashore</i>	61
<i>Rockin' Uke</i>	29	The G Chord	63
<i>Good Night Ladies</i>	31	The D7 Chord	63
<i>Blues in C</i>	33	Introducing F-Sharp	65
Ties	34	<i>Little Brown Jug</i>	65
<i>Down in the Valley</i>	34	<i>Over the Rainbow (Extended Version)</i>	66
Key Signatures	37	Review: Music Matching Games	69
<i>Ode to Joy (Extended Version)</i>	37	Certificate of Completion	71
		Ukulele Fingerboard Chart	72

Tuning Your Ukulele Tracks 1 & 2

The CD contains all the warm-ups and tunes in Book 2, so you may listen and play along with them. You need to be sure your ukulele is in tune every time you start to play, especially when you want to play along with the CD. Listen carefully to the instructions on Track 1, then use Track 2 to get your ukulele in tune.

Largo

The *New World Symphony* was composed by Antonin Dvořák in 1893 while he was the director of the National Conservatory of Music of America. Here is a fun fact about this piece: Neil Armstrong took a recording of the *New World Symphony* to the Moon during the Apollo 11 mission, the first Moon landing, in 1969.

Introducing the Page

1. Your child should be able to use their knowledge of the music alphabet (A B C D E F G) to deduce which note is missing from the melody. (The answer is upside down at the bottom of page 13.)
2. The quarter-quarter-half rhythm (♩ ♩ ♩) is very important in this melody. It occurs often, which helps give the tune its distinctive character.
3. The last eight measures are almost identical to the first eight measures. Only one note is changed (the next to last note, D, is an F in measure 7). The last four measures of the second line are repeated exactly in the third line. Noticing repeated elements in a melody always makes it easier to learn. Help your child learn to recognize these.

Practice Suggestions

1. Make sure your child can name every note, and say what string and fret it is on.
2. Use additive practice, as discussed on page 68 of Book 1. For example, learn the first two measures, then the next two, then play all four. Learn the next two, then play all six, etc.

Subsequent Lessons

Pattern recognition is one of the big benefits of learning music. It will carry over into other aspects of their mental development. As you study each piece together with your child, encourage them to find rhythms that recur, and melodic ideas that are repeated. Recognizing these things makes learning a new song easier!

Notes:

Largo

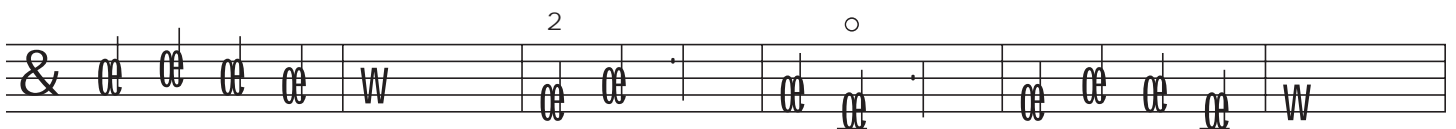
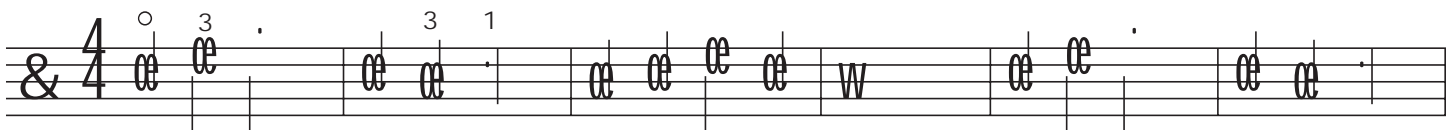


This version of composer Antonin Dvořák's famous melody uses all the notes you know so far except one. Which note is missing?

Largo Track 5

(from the *New World Symphony*)

Antonin Dvořák



Answer: B