

# A BROADWAY SONG

(A Partner Song with "Give My Regards to Broadway")

for 2-part voices and piano  
with optional SoundTrax CD\*

Words and Music by **GEORGE M. COHAN**  
Arranged, with additional Words and Music, by  
**SALLY K. ALBRECHT and JAY ALTHOUSE**

ALL: Turning to L, mime holding "hat" w/R hand to L of face (in four groups)

Group 1

Group 2

Group 3

Group 4

**Broadway 2-beat** (♩ = ca. 108)

PIANO

ALL: Lower "hat" to audience

Group 4

Group 3

Group 2

Group 1

5

R fist to chest

9 PART I (opt. unison)

Pan flat R palm across from L to R

*f*

Give my re - gards to Broad - way. Re -

\*SoundTrax CD available (43609).

Choreography video available for purchase at [alfred.com/video](http://alfred.com/video)

Copyright © 2016 by Alfred Music  
All Rights Reserved. Printed in USA.

To purchase a full-length performance recording of this piece, go to [alfred.com/downloads](http://alfred.com/downloads)

13 L fist to chest

Pan flat L palm across from R to L

mem - ber me to Her - ald Square. \_\_\_\_\_

17 Low bounce 8x

Tell all the gang at For - ty - Sec - ond Street that

21 Stand w/both thumbs in to chest

Drop open palms front

I will soon be there. \_\_\_\_\_

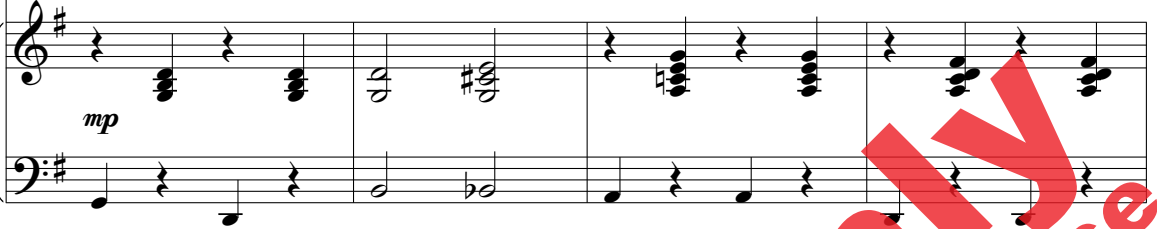
25 Low bounce 8x w/R index at mouth

*mp*



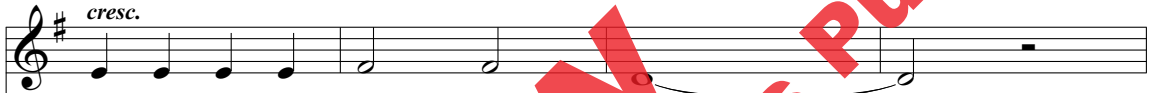
Whis - per of how I'm year - ing to

*mp*



29 "Wiper" sway w/jazz hands front

*cresc.*



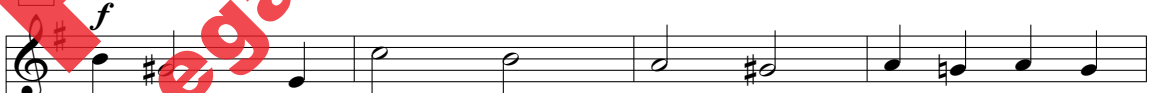
min - gle with the old time throng.

*cresc.*



33 R fist to chest

*f*



Give my re - gards to old Broad - way, and say that

Pan flat R palm across from L to R



37 Both thumbs in to chest

Drop open palms front

I'll be there 'ere long. \_\_\_\_\_

41 ALL: Turning to L, mime holding "hat" w/R hand to L of face (in four groups)  
Group 1 Group 2 Group 3 Group 4

45 ALL: Lower "hat" to audience  
Group 4 Group 3 Group 2 Group 1

Shake jazz hands up from shoulders

Conduct 4/4 pattern

49 PART II (opt. unison)

*f*

Lift up the cur - tain, strike up the band.

53 Pop clap over L shoulder

Tilt clap

R L R L

Turn on the spot - light. Give me a hand.

57 Low bounce 8x

I'm off for Broad - way; I won't stop

61 R index at shoulder

Push R index up high

un - til I reach the ver - y top!

65 Fold arms front and pulse 2x

Push fists to floor

*mp*  
I've wait - ed too long, not an y - more.

69 "Wiper" sway w/jazz hands front

R L R L R L R L  
*cresc.*

I'm walk - in' in through the back-stage door.

*cresc.*

73 R fist to chest

Pan flat R palm across from L to R

Broad - way is where I be - long,

77 "Wiper" sway w/jazz hands front  
R L R L

Drop open palms front

sing - ing a Broad - way song.

81 ALL: Turning to L (while holding "hat" w/R hand to L of face (in four groups)

Group 1 Group 2 Group 3 Group 4

85 ALL: Lower "hat" to audience

Group 4                      Group 3                      Group 2                      Group 1

89

PART I R fist to chest                      Pan flat R palm across from L to R

*f* Give my re - gards to Broad way. Re -

PART II Shake jazz hands up from shoulders                      Conduct 4/4 pattern

*f* Lift up the cur - tain, strike up the band.

93

L fist to chest                      Pan flat L palm across from R to L

mem - ber me to Her - ald Square.

Pop clap over L shoulder                      Tilt clap

R                      L                      R                      L

Turn on the spot - light.                      Give me a hand.



97

Low bounce 8x

Tell all the gang at For - ty - Sec - ond Street that

Low bounce 8x

I'm off for Broad - way; I won't stop

101

Stand w/both thumbs in to chest

Drop open palms front

I will soon be there

R index at shoulder Push R index up high

un - til I reach the ver - y top!

105

Low bounce 8x w/R index at mouth

*mp* Whis - per of how I'm yearn - ing to

Fold arms front and pulse 2x Push fists to floor

*mp* I've wait - ed too long, not an - y - more.

109 "Wiper" sway w/jazz hands front  
 R L R L R L R L  
*cresc.*

min - gle with the old time throng.

"Wiper" sway w/jazz hands front  
 R L R L R L R L  
*cresc.*

I'm walk - in' in through the back-stage door.

113 R fist to chest Pan flat R palm across from L to R

*f*

Give my re - gards to old Broad way, and say that  
 R fist to chest Pan flat R palm across from L to R

Broad - way is where I be - long,

117 Both thumbs in to chest Drop open palms front Final pose\*

I'll be there 'ere long.

"Wiper" sway w/jazz hands front Drop open palms front Final pose\*  
 R R L

sing - ing a Broad - way song.

\*Final pose: mime putting hat on, throw a kiss to the audience w/R hand, or arrange choir in a big final pose (front row down on knees, center row with hands out, and top row with hands up).