

FROSTY THE SNOWMAN

for 2-part voices and Piano
with optional staging and SoundTrax CD*

Performance time: approx. 3:25

Arranged, with additional Words and Music, by
SALLY K. ALBRECHT

Words and Music by
STEVE NELSON and JACK ROLLINS

Rock and roll (♩ = ca. 152)

ALL: Mime packing snow and making a snowman

PART I
(or unis.)

PIANO

f

C Dm7/G G7 C G7

5 Bounce 2x to R, holding arms front in a circle Bounce 2x to L, holding arms front in a circle

f

Frost - y the snow-man was a jol - ly hap - py soul, with a

C F G7 C

9 Hold R hand like pipe Point to nose w/L Hold hands at eyes like binoculars

corn cob pipe and a but-ton nose and two eyes made out of coal.

F G7 C G7/D G

* SoundTrax CD also available (43461).

© 1950 (Renewed) CHAPPELL & CO., INC.
This Arrangement © 2015 CHAPPELL & CO., INC
All Rights Reserved. Printed in USA.
Sole Selling Agent for This Arrangement: Alfred Music

13 Bounce 2x to R, holding arms front in a circle Bounce 2x to L, holding arms front in a circle



Musical notation for the first system, including a vocal line and piano accompaniment.

Fros - ty the snow-man is a fair - y tale they say. He was

C F G7 C

Piano accompaniment for the first system.

17 Mime packing a snowball

Raise arms like you are just coming alive

mf

Musical notation for the second system, including a vocal line and piano accompaniment.

made of snow but the chil-dren know how he came to life one day. There

F G7 C Dm7 C/G G C C7

Piano accompaniment for the second system.

21 Agree with a friend nearby

Musical notation for the third system, including a vocal line and piano accompaniment.

must have been some mag - ic in that old silk hat they found. For

F C Dm7 G7 C Am7

Piano accompaniment for the third system.

25 Mime putting on a hat
cresc.

Dance like a snowman

f

when they placed it on his head he be - gan to dance a - round. Oh,

G/D G N.C. G G7

cresc.

29 Bounce 2x to R, holding arms front in a circle

Bounce 2x to L, holding arms front in a circle

||:

Frost - y the snow-man was a - live as he could be, — and the

C F G7 C

f

33 Dance like a snowman

Palms out to audience Thumbs to chest

chil-dren say he could laugh and play — just the same as you and me.

F G7 C Dm7 C/G G C

f

37

Pat thighs using vocal rhythm

Dance like a snowman



Thump - e - ty thump thump thump-e - ty thump thump look at Frost - y go.



Dm⁷ G⁷

41

Pat thighs using vocal rhythm

Dance like a snowman

Put hat on head



Thump - e - ty thump thump thump-e - ty thump thump o - ver the hills of snow.



C Dm⁷ F/G G C

45

Bounce 2x to R, holding arms front in a circle

Bounce 2x to L, holding arms front in a circle

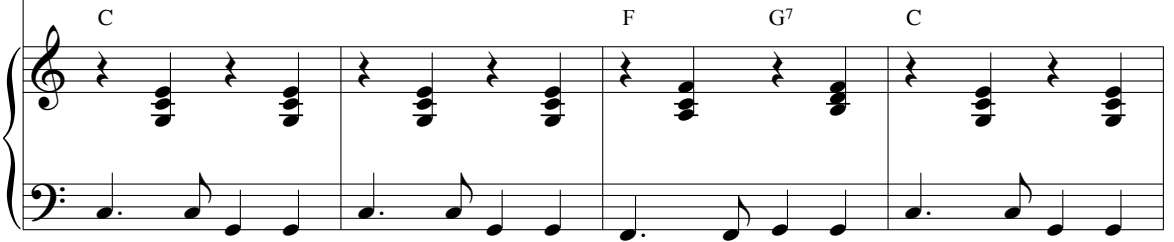
Hold hands at eyes like binoculars

PART II (or unis.)

f



Frost - y, oh Frost - y had two eyes made out of coal...



C F G⁷ C

49 Punch R fist across

Swing arms and snap from R to L



Musical staff with notes and rests.

He was such a hap-py soul. — He just loved to rock and roll. —

F G7 C G7/D G

Piano accompaniment with treble and bass staves.

53 Bounce 2x to R, holding arms front in a circle

Bounce 2x to L, holding arms front in a circle

Hold face in amazement leaning R

Musical staff with notes and rests.

Frost - y, oh Frost - y, well he came to life one day. —

C F G7 C

Piano accompaniment with treble and bass staves.

57 Hold face in amazement leaning L

Fold arms front in defiance and turn head R and L

Musical staff with notes and rests.

You could hear the peo-ple say: — he can nev - er run a - way. —

F G7 C Dm7 C/G G C C7

Piano accompaniment with treble and bass staves.

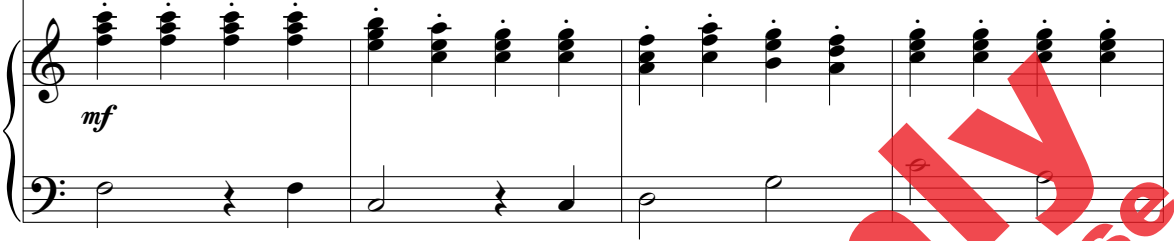
61 Agree with a friend nearby

mf



There must have been some mag - ic in that hat they found.

F C Dm⁷ G⁷ C Am⁷



65 Mime putting on a hat

cresc.

Dance like a snowman



When they placed it on his head, you should have seen him dance a-round.

G/D G N.C. G G⁷



69

Bounce 2x to R, holding arms front in a circle Bounce 2x to L, holding arms front in a circle

||:

f



Frost - y, oh Frost - y was a-live like you and me, —

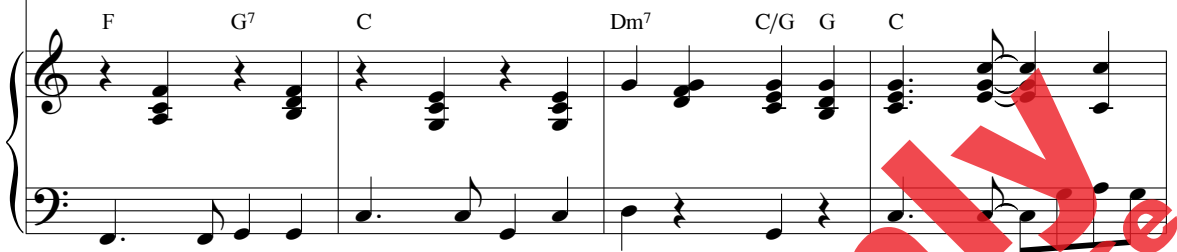
C F G⁷ C



73 Dance like a snowman Hold low to front Nod head 2x in agreement



danc - in' cra - zy as could be. — When you see him you'll a - gree. —



77

Pat thighs using vocal rhythm Dance like a snowman



Thump thump thump - e - ty thump thump thump - e - ty look at Frost - y go.

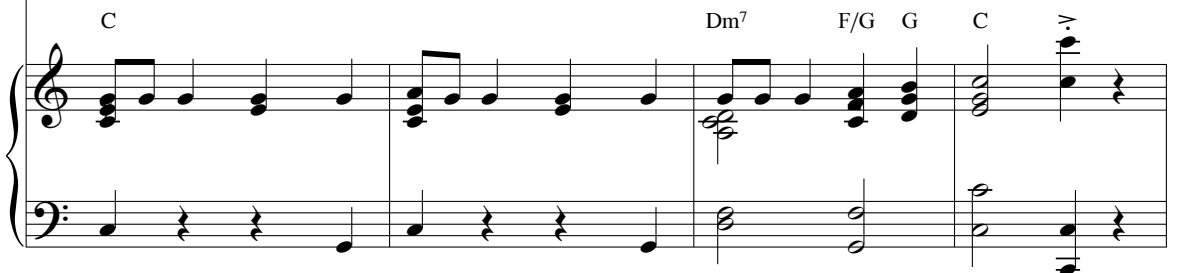


81

Pat thighs using vocal rhythm Dance like a snowman Put hat on head



Thump thump thump - e - ty thump thump thump - e - ty o - ver the hills of snow.



85 ALL: Mime packing snow and making a snowman

C Dm7/G G7 C G7

89 P. I Bounce 2x to R, holding arms front in a circle Bounce 2x to L, holding arms front in a circle ||:

f

Frost - y the snow-man was a jol - ly hap - py soul, with a

P. II Bounce 2x to R, holding arms front in a circle Bounce 2x to L, holding arms front in a circle Hold hands at eyes like binoculars

C F G7 C

Frost - y, oh Frost - y had two eyes made out of coal...

93 Hold R hand like pipe Point to nose w/L Hold hands at eyes like binoculars

corn cob pipe and a but-ton nose and two eyes made out of coal.

F G7 C G7/D G

Punch R fist across Swing arms and snap from R to L ||:

He was such a hap-py soul. He just loved to rock and roll.

107

Mime putting on a hat
cresc.

old silk hat they found. For when they placed it on his head he be -
in that hat they found. When they placed it on his head

cresc.

Dm⁷ G⁷ C Am⁷ G/D G

111

Dance like a snowman

113 Bounce 2x to R, holding arms front in a circle

gan to dance a - round. Oh, Frost - y the
you should have seen him dance a-round. Frost - y, oh

Dance like a snowman
N.C. G G C

f

Bounce 2x to R, holding arms front in a circle

114

Bounce 2x to L, holding arms front in a circle

Dance like a snowman

snow-man was a - live as he could be, — and the chil-dren say he could
Frost - y was a-live like you and me, — danc-in' cra - zy

Bounce 2x to L, holding arms front in a circle

F G⁷ C F G⁷

118

Palms out to audience Thumbs to chest

laugh and play — just the same as you and me.

Hold low to front Nod head 2x in agreement

as could be. — When you see him you'll a - gree. —

C Dm⁷ C/G G C

121

Pat thighs using vocal rhythm Dance like a snowman

Thump - e - ty thump thump thump - e - ty thump thump look at Frost - y go.

Pat thighs using vocal rhythm Dance like a snowman

Thump thump thump - e - ty thump thump thump - e - ty look at Frost - y go.

Dm⁷ G⁷

125

Pat thighs using vocal rhythm Dance like a snowman Put hat on head

Thump - e - ty thump thump thump - e - ty thump thump o - ver the hills of snow.

Pat thighs using vocal rhythm Dance like a snowman Put hat on head

Thump thump thump - e - ty thump thump thump - e - ty o - ver the hills of snow.

C Dm⁷ F/G G C