

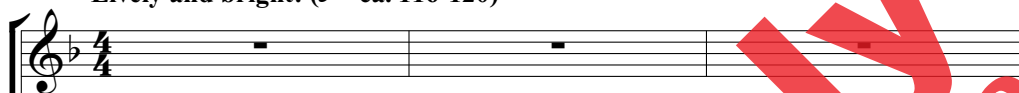
# WINTER SLEIGH RIDE

for S.A.B. voices and piano  
with optional SoundTrax CD\*

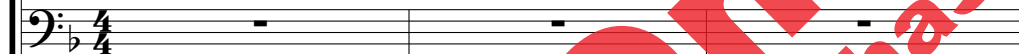
Words and Music by  
DAVE and JEAN PERRY

Lively and bright! (♩ = ca. 116-120)

SOPRANO  
ALTO



BARITONE



Lively and bright! (♩ = ca. 116-120)

PIANO



4

5 *mf*

Through the night the cold winds blow,

\* Also available for 2-part (43268).  
SoundTrax CD available (43269).

Copyright © 2015 by Alfred Music  
All Rights Reserved. Printed in USA.

To purchase a full-length performance recording of this piece, go to [alfred.com/downloads](http://alfred.com/downloads)

7

lift - ing clouds of fall - en snow. Swirl - ing crys - tals

10

fill the sky, sting - ing us as we ride.

13

*mf*

Down the lane, our trust - y steed gal - lops by a

16

musical notation for the first system, including vocal line and piano accompaniment.

fro - zen stream. How he loves to pull the sleigh

musical notation for the second system, including vocal line and piano accompaniment.

19

musical notation for the third system, including vocal line and piano accompaniment.

tak - ing us on our way. And so we sing to - geth - er Sing to - geth - er

musical notation for the fourth system, including vocal line and piano accompaniment.

22

musical notation for the fifth system, including vocal line and piano accompaniment.

on this night, fill - ing the air with laugh - ter bright. on this night, fill the air with laugh - ter bright.

musical notation for the sixth system, including vocal line and piano accompaniment.

25

Through the storm, we're on our way,  
Through the storm, we're on our way,

Piano accompaniment for measures 25-26, featuring a 7/8 time signature and a key signature of one flat. The right hand plays chords and moving lines, while the left hand provides a steady bass line.

27

rid - ing to - geth - er in the sleigh.

Piano accompaniment for measures 27-28, continuing the 7/8 time signature and one flat key signature. The accompaniment includes a key signature change to two sharps in the right hand for measures 27-28.

29

*mf* Cheeks and nos - es, ros - y bright, feel the cold wind's  
*mf*

*mf*

Piano accompaniment for measures 29-30, continuing the 7/8 time signature and two sharp key signature. The right hand features a rhythmic pattern of eighth notes and chords, while the left hand plays a simple bass line.

32

*cresc.*

ic - y bite. Wool - en mit - tens keep us warm,

*cresc.*

*cresc.*

35

rid - ing through the storm. And so we

*f*

37

*f* sing to - geth - er on this night, fill - ing the air with

Sing to - geth - er on this night, fill the air with

40

laugh - ter bright. Through the storm, we're

laugh - ter bright. Through the storm, we're

42

on our way, rid - ing to - geth - er in the

44

sleigh.

*decresc.*

Repeat 3 times:  
1. ALTO only  
2. ALTO and SOPRANO  
3. ALL

47

S. *mf*  
Rid - ing all to - geth - er through the storm.

A. *mf*  
Rid - ing to - geth - er through the storm.

B. *mf*  
Rid - ing to - geth - er through the storm.

*mf*

49

*grad. cresc. (last time only)*  
Wool - en mit - tens keep us ver - y warm.

*grad. cresc. (last time only)*  
Warm wool - en mit - tens keep us warm.

*grad. cresc.*  
Warm wool - en mit - tens keep us warm.

*grad. cresc. (last time only)*

51

Snow - flakes fill the night, swirl - ing through the air,  
 Snow - flakes are swirl - ing through the air,  
 Snow - flakes are swirl - ing through the air,

53

1.2.  
*sub. p* *cresc.*  
 in the sleigh, when we're  
*sub. p* *cresc.*  
 in the sleigh, there's laugh - ter and sing - ing, when we're



55 [3.]

in the sleigh to - night.  
 when we are rid - ing the sleigh to - night.  
 when we're rid - ing in the sleigh to - night.

[3.]

57

S. *f*  
 A. Sing to - geth - er as we ride a - long,  
 B. *f*

*f*

59

fill - ing the air with laugh - ter and with song.

61

Through the storm, we're on our way,

63

rid - ing to - geth - er in the sleigh.

65 *cresc.*

Rid - ing to - geth - er in the

*cresc.*

Detailed description: This system contains the vocal line for measures 65, 66, and 67. The music is in a key with one flat (B-flat major or D minor) and a common time signature. The vocal line starts with a whole rest in measure 65, followed by quarter notes in measure 66, and a half note in measure 67. The lyrics "Rid - ing to - geth - er in the" are aligned with the notes. Dynamics include a *cresc.* marking above the first measure and below the second measure.

*cresc.*

Detailed description: This system contains the piano accompaniment for measures 65, 66, and 67. The right hand features chords and eighth-note patterns, while the left hand plays a steady eighth-note accompaniment. A *cresc.* dynamic marking is placed below the right-hand staff in measure 66.

68 *ff*

sleigh.

*ff*

Detailed description: This system contains the vocal line for measures 68 and 69. The vocal line consists of two long, sustained notes, each held for two measures. The lyrics "sleigh." are written below the first note. Dynamics include *ff* markings above the first and second notes.

*ff*

*8<sup>vb</sup>*

Detailed description: This system contains the piano accompaniment for measures 68 and 69. The right hand plays chords and eighth-note patterns, while the left hand plays a steady eighth-note accompaniment. A *ff* dynamic marking is placed below the right-hand staff in measure 68. The system concludes with a double bar line and a *8<sup>vb</sup>* marking below the left-hand staff.