


Alfred's Premier Piano Course

Gayle Kowalchyk • E. L. Lancaster

Notespeller 1B is designed to be used with Lesson Book 1B of *Alfred's Premier Piano Course*. It can also serve as an effective supplement for other piano methods.

Notespeller 1B reinforces note-reading concepts presented in the Lesson Book through written exercises. Note and interval identification exercises are presented to provide systematic reinforcement to help the student read and write notes on the staff.

The pages in this book correlate page by page with the materials in Lesson Book 1B. They should be assigned according to the instructions in the upper right corner of pages in this book. They also may be assigned as review material at any time after the student has passed the designated Lesson Book page.

Look for QR codes () throughout the book.

1. Download a free QR code app to a smart phone from iTunes® or Google Play™.
2. Open the app, and then hold the smart phone above the QR code.

Within seconds, a Premier Online Assistant video corresponding to the page in this book will play. These videos provide additional explanations of concepts.

In addition to written exercises, unique features of the book include:

- Short explanations of musical concepts to use as a review before completing the written activities.
- Reinforcement of the rhythm patterns introduced in Lesson 1B.
- Note-reading exercises that introduce the student to famous composers.
- Colorful illustrations that relate to the art used in Lesson 1B.

Illustrations by Jimmy Holder



Copyright © 2014 by Alfred Music
All Rights Reserved. Printed in USA.

ISBN-10: 1-4706-1488-X
ISBN-13: 978-1-4706-1488-1

No part of this book shall be reproduced, arranged, adapted, recorded, publicly performed, stored in a retrieval system, or transmitted by any means without written permission from the publisher. In order to comply with copyright laws, please apply for such written permission and/or license by contacting the publisher at alfred.com/permissions.

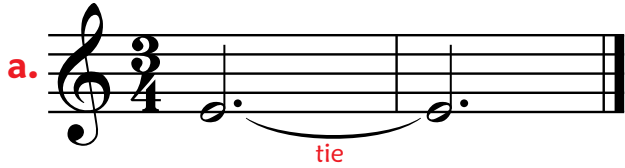
iTunes® is a trademark of Apple, Inc., registered in the U.S. and other countries. Google Play™ is a trademark of Google, Inc.

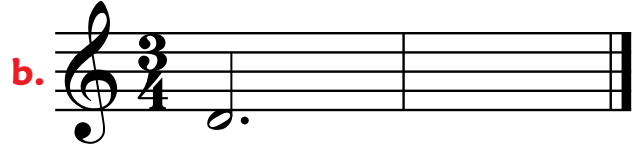
GERSHWIN® and GEORGE GERSHWIN® are registered trademarks of Gershwin Enterprises. RHAPSODY IN BLUE™ is a trademark of the George Gershwin Family Trust.



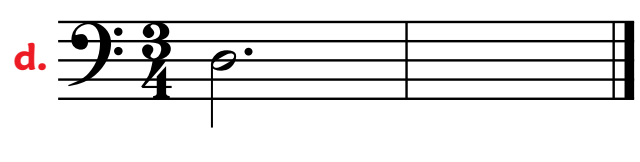
Tie

1. Draw a dotted half note in the second measure that is the same as the note in the first measure. Name the notes. Connect the notes in each example with a tie.

a. 

b. 

c. 

d. 

Hint: Curved line (tie) goes above these notes.

2. **Note Review:** Draw lines to connect the fish to two matching notes on the sea plants (one note in bass clef and one note in treble clef).

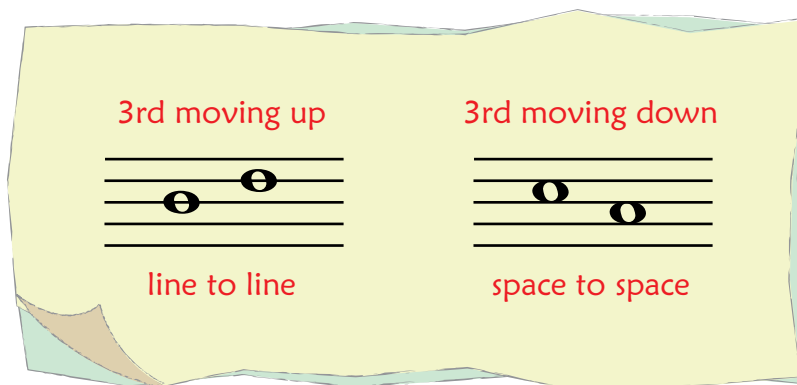


Interval of a 3rd

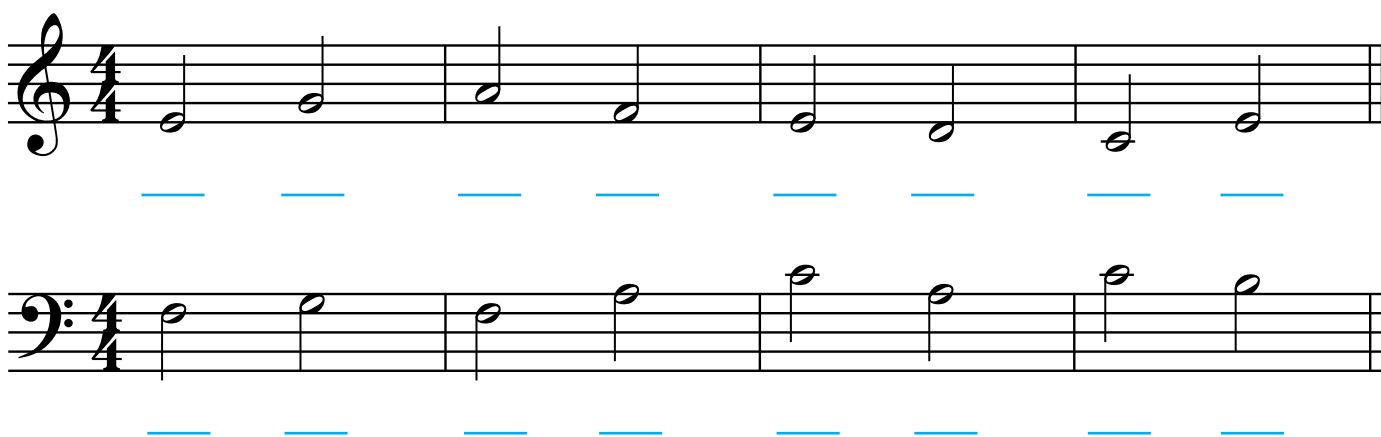
On the staff, the notes of a 3rd move up or down:

- from a line to the next line
- from a space to the next space

A 3rd is the same as a skip.



1. Name each note. Then, cross out the measures that *do not* contain 3rds.



2. Draw a line to connect the 3rds to the matching note names.



E-G



G-E



A-F



G-B



Review

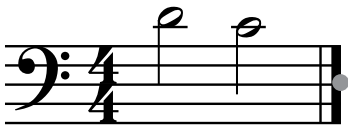
1. Draw a line to connect the intervals to the matching note names.



D-C



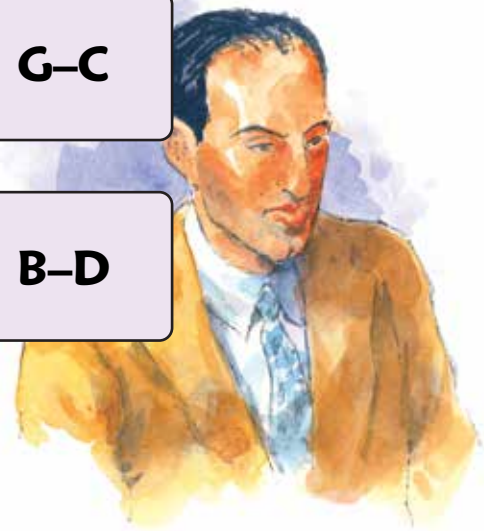
F-C



G-C



B-D



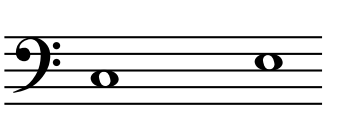
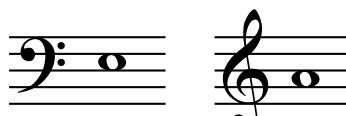


2. Name the notes to learn about this famous composer.

Meet George Gershwin (1898–1937)

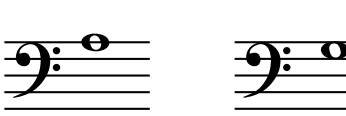

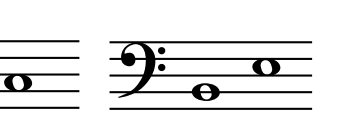
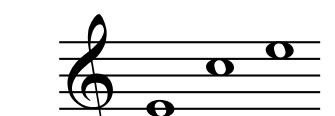







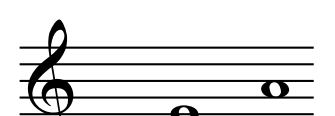

 ____ or ____ ____ rshwin is ____ ____ mous ____ m ____ ri ____ n

 ____ ompos ____ r. H ____ ____ n ____ his broth ____ r, lr ____, wrot ____

 m ____ ny songs to ____ th ____ r. P ____ rh ____ ps his ____ st-known pi ____

 is “Rh ____ psody in ____ lu ____” for pi ____ no ____ n ____ or ____ h ____ str ____ .