

HAUNTED PLACES

By Brendan McBrien

INSTRUMENTATION

Conductor Score	1
Violin I	8
Violin II	8
Viola	5
Cello	5
String Bass	5

The memories of a childhood well-spent are a priceless thing; climbing trees, riding bikes, digging holes deep enough to hide in, and exploring haunted places. I grew up in the Santa Clara Valley south of San Francisco, a place once surrounded by agriculture. When I was a young boy, many of the local apricot, plum, and cherry farmers sold their orchards to semiconductor companies and became instant millionaires. Their old vacant homes, surrounded by hundreds of dying trees, became the fuel for our over-active imaginations. We never doubted the “stories” we heard, and the fact that there was always some grisly circumstance connected to each place never made us suspicious that the older boys might be just trying to scare us. I guess we liked the feeling, the chill that ran down our spines when we looked through the dirty, sometimes broken windows into these old homes, and recalled “that thing” that supposedly happened there. At night our eyes could fool us, and we were sure that in the dim light we saw something move at the top of the stairs! We ran so hard we thought our hearts would leap through our chests! Those were rich and precious memories. *Haunted Places* attempts to capture the over-active imagination of my youth, the “stretched truths” of rumor, and the fact that, though we were at times skeptical of Saint Nick, we were quite sure ghosts were real!



Please note: Our band and orchestra music is now being collated by an automatic high-speed system. The enclosed parts are now sorted by page count, rather than score order.

"This work is dedicated to my friend and colleague Henry Miller, for his selfless dedication to his students, his teaching, and his family. The future of music education is brighter thanks to teachers like him. He is an inspiration to all of us."

Haunted Places

CONDUCTOR SCORE

Duration - 3:10

Allegro misterioso (♩ = 120)

Brendan McBrien

Violins

Violins I

Violins II

Viola

Cello

String Bass

mp

pizz.

mp

pizz.

mp

1 2 3

Vlms.

Vlms. I

Vlms. II

Vla.

Cello

Str. Bass

mp

pizz.

mp

pizz.

4 5 6 7

9

Vlns. I *mp*

Vlns. II *arco* *mf*

Vla. *mf*

Cello

Str. Bass *mf*

8 9 10 11

13

Vlns. I *mf*

Vlns. II *mf*

Vla. *div.* *non div.*

Cello

Str. Bass *mf*

12 13 14

17

Vlns. I

Vlns. II

Vla.

Cello

Str. Bass

div.

Soli

dolce

15 16 17

Vlns. I

Vlns. II

Vla.

Cello

Str. Bass

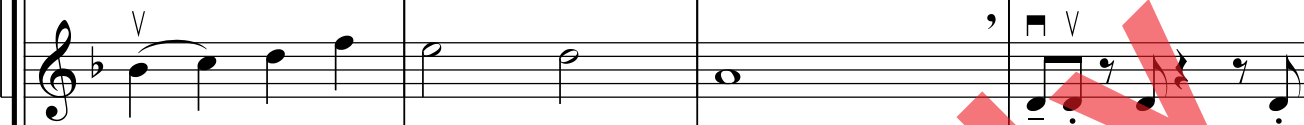
18 19 20 21

Vlns.

I



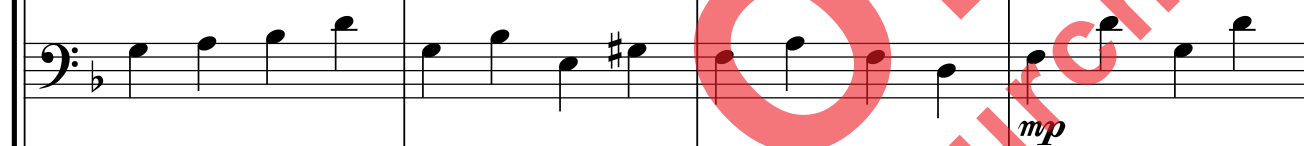
II



Vla.



Cello



Str. Bass



Vlns.

I



II



Vla.



Cello



Str. Bass



Vlns. I *V*
 Vlns. II *div.*
 Vla.
 Cello
 Str. Bass

30 31 32 33 *mf* *pizz.*

Vlns. I *Solo (arco)*
 Vlns. II *div.*
 Vla. *div.*
 Cello
 Str. Bass

34 35 36 *mp* *pizz.* *Section*

Score for Violins (Vlns.), Viola (Vla.), Cello, and String Bass (Str. Bass) across measures 37, 38, and 39.

Vlns. I: Measures 37-39. Measure 37: Quarter notes G4, A4, Bb4, A4, G4. Measure 38: Quarter notes G#4, A4, B4, A4, G4. Measure 39: Quarter notes G#4, A4, B4, A4, G4.

Vlns. II: Measures 37-39. Measure 37: Quarter notes F#4, G4, A4, G4, F#4. Measure 38: Quarter notes F#4, G4, A4, G4, F#4. Measure 39: Quarter notes F#4, G4, A4, G4, F#4.

Vla.: Measures 37-39. Measure 37: Quarter notes E4, F#4, G4, F#4, E4. Measure 38: Quarter notes E4, F#4, G4, F#4, E4. Measure 39: Quarter notes E4, F#4, G4, F#4, E4.

Cello: Measures 37-39. Measure 37: Quarter notes G3, A3, Bb3, A3, G3. Measure 38: Quarter notes G#3, A3, B3, A3, G3. Measure 39: Quarter notes G#3, A3, B3, A3, G3.

Str. Bass: Measures 37-39. Measure 37: Quarter notes E2, F#2, G2, F#2, E2. Measure 38: Quarter notes E2, F#2, G2, F#2, E2. Measure 39: Quarter notes E2, F#2, G2, F#2, E2.

Score for Violins (Vlns.), Viola (Vla.), Cello, and String Bass (Str. Bass) across measures 40, 41, and 42.

Vlns. I: Measures 40-42. Measure 40: Quarter notes G4, A4, Bb4, A4, G4. Measure 41: Quarter notes G#4, A4, B4, A4, G4. Measure 42: Quarter notes G#4, A4, B4, A4, G4.

Vlns. II: Measures 40-42. Measure 40: Quarter notes F#4, G4, A4, G4, F#4. Measure 41: Quarter notes F#4, G4, A4, G4, F#4. Measure 42: Quarter notes F#4, G4, A4, G4, F#4.

Vla.: Measures 40-42. Measure 40: Quarter notes E4, F#4, G4, F#4, E4. Measure 41: Quarter notes E4, F#4, G4, F#4, E4. Measure 42: Quarter notes E4, F#4, G4, F#4, E4.

Cello: Measures 40-42. Measure 40: Quarter notes G3, A3, Bb3, A3, G3. Measure 41: Quarter notes G#3, A3, B3, A3, G3. Measure 42: Quarter notes G#3, A3, B3, A3, G3.

Str. Bass: Measures 40-42. Measure 40: Quarter notes E2, F#2, G2, F#2, E2. Measure 41: Quarter notes E2, F#2, G2, F#2, E2. Measure 42: Quarter notes E2, F#2, G2, F#2, E2.

Vlns. I *mf* *div.*

Vlns. II *mf* *div.*

Vla. *mf*

Cello *mf*

Str. Bass *mf*

43 44 45 *f*

Vlns. I *f* *arco* *Tutti* *mf dolce*

Vlns. II *f* *arco* *mp* *arco*

Vla. *f* *mp*

Cello *f* *mp*

Str. Bass *f* *(pizz.)* *mp*

46 47 48

Score for measures 49-52, featuring Violins (Vlns.), Viola (Vla.), Cello, and String Bass (Str. Bass).

Measures 49-52 show the following parts:

- Vlns. I:** Treble clef, key of B-flat. Measures 49-50: quarter notes G4, A4, Bb4, A4. Measure 51: quarter note G4, half note A4. Measure 52: quarter note G4, half note A4.
- Vlns. II:** Treble clef, key of B-flat. Measures 49-50: quarter notes G4, A4, Bb4, A4. Measure 51: quarter note G4, half note A4. Measure 52: quarter note G4, half note A4.
- Vla.:** Alto clef, key of B-flat. Measures 49-50: quarter notes G4, A4, Bb4, A4. Measure 51: quarter note G4, half note A4. Measure 52: quarter note G4, half note A4.
- Cello:** Bass clef, key of B-flat. Measures 49-50: quarter notes G3, A3, Bb3, A3. Measure 51: quarter note G3, half note A3. Measure 52: quarter note G3, half note A3.
- Str. Bass:** Bass clef, key of B-flat. Measures 49-50: quarter notes G2, A2, Bb2, A2. Measure 51: quarter note G2, half note A2. Measure 52: quarter note G2, half note A2.

Measure numbers 49, 50, 51, and 52 are indicated below the staff.

Score for measures 53-56, featuring Violins (Vlns.), Viola (Vla.), Cello, and String Bass (Str. Bass).

Measures 53-56 show the following parts:

- Vlns. I:** Treble clef, key of B-flat. Measures 53-54: quarter notes G4, A4, Bb4, A4. Measure 55: quarter note G4, half note A4. Measure 56: quarter note G4, half note A4.
- Vlns. II:** Treble clef, key of B-flat. Measures 53-54: quarter notes G4, A4, Bb4, A4. Measure 55: quarter note G4, half note A4. Measure 56: quarter note G4, half note A4.
- Vla.:** Alto clef, key of B-flat. Measures 53-54: quarter notes G4, A4, Bb4, A4. Measure 55: quarter note G4, half note A4. Measure 56: quarter note G4, half note A4.
- Cello:** Bass clef, key of B-flat. Measures 53-54: quarter notes G3, A3, Bb3, A3. Measure 55: quarter note G3, half note A3. Measure 56: quarter note G3, half note A3.
- Str. Bass:** Bass clef, key of B-flat. Measures 53-54: quarter notes G2, A2, Bb2, A2. Measure 55: quarter note G2, half note A2. Measure 56: quarter note G2, half note A2.

Measures 53, 54, 55, and 56 are indicated below the staff. Measure 55 is marked with a box containing the number 55.

Dynamic markings and articulations for measures 55-56:

- Vlns. I:** *mf*
- Vlns. II:** *mf dolce*
- Vla.:** *mf dolce*
- Cello:** *mf*
- Str. Bass:** *mf*, *pizz.*

Vlns. I

Vlns. II

Vla.

Cello

Str. Bass

57 58 59 60

Vlns. I

Vlns. II

Vla.

Cello

Str. Bass

61 62 63 64

mp

p

div.

arco

mp

arco

Vla.

Cello

Str. Bass

Vlns.

Vla.

Cello

Str. Bass

71

Vlns.

Vla.

Cello

Str. Bass

mf

71 72 73

Vlns.

Vla.

Cello

Str. Bass

mf

f

mf

f

74 75 76

79

Vlns. I

Vlns. II

Vla.

Cello

Str. Bass

f

ff

f

ff

77 78 79

Vlns. I

Vlns. II

Vla.

Cello

Str. Bass

80 81 82

83

Vlns. I *mp*

Vlns. II *mp*

Vla. *mp*

Cello *mp*

Str. Bass *mp sub.*

83 84 85

Vlns. I

Vlns. II

Vla.

Cello

Str. Bass

86 87 88

Vlns. I

Vlns. II

Vla.

Cello

Str. Bass

89 90 91

pizz. pizz. pizz. pizz.

Vlns. I

Vlns. II

Vla.

Cello

Str. Bass

92 93 94

ff arco *div.* *non div.*

ff arco *div.* *non div.*

ff arco *div.*

ff arco

Preview Only
Legal Use Requires Purchase