

STAIRWAY TO HEAVEN

for S.A.T.B. voices and piano
with optional SoundPax and SoundTrax CD*

Arranged by
ERIC VAN CLEAVE

Words and Music by
JIMMY PAGE
and **ROBERT PLANT**

Gently (♩ = ca. 76)

Am Eaug/G# C/G D/F# Fmaj7

PIANO *p*

4 SOLO *mp* 5

There's a la - dy who's sure all that glit - ters is gold_ and she's

SOPRANO *p*

ALTO *pp*

TENOR *p*

BASS

G/B Am Eaug/G# C/G D/F#

* Also available for S.A.B. (41897) and S.S.A. (41898).
SoundTrax CD available (41899). SoundPax available (41900) - includes score and set of parts for 2 Recorders, Alto Saxophone,
Tenor Saxophone, Baritone Saxophone, 2 Trumpets, Trombone, Acoustic Guitar, Synthesizer, Bass, and Drumset.

© 1972 (Renewed) FLAMES OF ALBION MUSIC, INC.
All Rights Administered by WB MUSIC CORP.
Exclusive Print Rights for the World Excluding Europe Administered by ALFRED MUSIC
This Arrangement © 2014 FLAMES OF ALBION MUSIC, INC.
All Rights Reserved. Printed in USA.
Sole Selling Agent for This Arrangement: Alfred Music
To purchase a full-length performance recording of this piece, go to alfred.com/downloads

4

7



buy - ing a stair-way to heav - en. When she gets there she knows if the



Heav - en. Oo

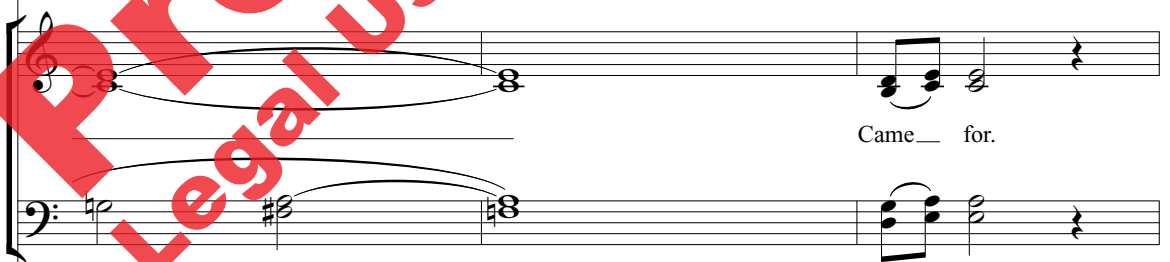


Fmaj7 G/B Am Am Eaug/G#

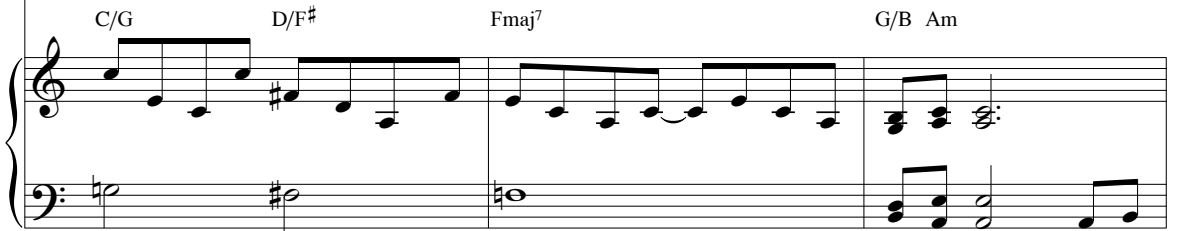
10



stores are all closed, with a word she can get what she came for.



Came for.



C/G D/F# Fmaj7 G/B Am

13

Oo _____ oo _____ And she's buy - ing a stair - way to

Ah _____

C D Fmaj⁷ Am C C

16

heav - en. 17 There's a sign on the wall _____ but she wants to be sure, _____ 'cause you

D(sus⁴) D C D Fmaj⁷ Am

know some - times words have two mean - ings. In a

Ah In a

C D Fmaj7

tree by the brook, there's a song - bird who sings some-times

tree by the brook, there's a song - bird who sings.

Am Eaug/G# C/G D/F#

23

25 A little faster (♩ = ca. 80)
mf

all of our thoughts are mis-giv - ings. Oo

mp

Oo Mis - giv - ings. Oo

A little faster (♩ = ca. 80)

mp

Fmaj7 G/B Am G/B Am7 D(sus2)

26

It makes me won - der.

It makes me won - der.

D

Em/D

Am7

Em/D

(end solo)

Oo _____ It makes me won - der. _____

Oo _____ It makes me won - der. _____

D C/D D Am⁷ D(sus²) D Em/D



31 **33** **Faster** (♩ = 85) *mp* *accel.* Ah

mf

If there's a bus-tle in your

Am⁷ Em/D D C/D D **Faster** (♩ = 85) C G/B *mf* *accel.*

34 *mf*

Don't be a-larmed now. It's just a spring clean for the May-

hedge - row, don't be a-larmed now.

Am C G/B F/C

36

Queen. Yes, there are two paths you can

Am C G/B

38

go by, but in the long run, there's still some time to change-

Am C G/B F



40 SOLO

mf

Musical staff for SOLO section, starting with a rest followed by a melodic line.

The road you're on.

S.

Musical staff for Soprano (S.) part, showing chordal accompaniment.

A.

the road you're on.

T.

Musical staff for Tenor (T.) part, showing chordal accompaniment.

B.

Piano accompaniment for the first section, including chords Am, C, G/B, and D.

43 Majestic (♩ = ca. 92)

Musical staff for the beginning of the 'Majestic' section, showing a rest.

Musical staff for the beginning of the 'Majestic' section, showing a rest.

Musical staff for the beginning of the 'Majestic' section, showing a rest.

Majestic (♩ = ca. 92)

Piano accompaniment for the 'Majestic' section, including chords D(sus4), D, C, D/C, and C.

46 *poco accel.* **Rock!** (♩ = ca. 98)

Musical staff with a treble clef, containing a whole rest.

Musical staff with a treble clef, containing a whole rest. *poco accel.*

Musical staff with a bass clef, containing a whole rest.

Piano accompaniment for measures 46-48. Chords: G/B, Am, G, F, G. *poco accel.* **Rock!** (♩ = ca. 98)

Vocal line for measure 49. *opt. SOLO ad lib. f* [51] Oh — oh —

Piano accompaniment for measure 49. *f* *Woah oh — oh oh —*

Piano accompaniment for measures 50-51. Chords: Am, G, F, G, Am, G.

oh _____ oh oh _____ oh _____ whoa oh oh oh

Whoa oh _____ oh oh _____

F G Am G F

55 A little faster (♩ = 100)

And as we wind on down the road,

A little faster (♩ = 100)

Am G F G

our shad - ows tall - er than our soul.

Am G F G

59

There walks a la - dy we all know.____

Detailed description: This system contains the vocal line and piano accompaniment for measures 59 and 60. The vocal line is in treble clef with a 7/8 time signature. The piano accompaniment is in bass clef. The lyrics are "There walks a la - dy we all know.____".

Am G F G

Detailed description: This system shows the piano accompaniment for measures 59 and 60. It features a grand staff with treble and bass clefs. Chord symbols Am, G, F, and G are placed above the treble staff. The piano part consists of chords and moving lines in both hands.

61

Who shines white light____ and wants to show____

Detailed description: This system contains the vocal line and piano accompaniment for measures 61 and 62. The vocal line is in treble clef with a 7/8 time signature. The piano accompaniment is in bass clef. The lyrics are "Who shines white light____ and wants to show____".

Am G F

Detailed description: This system shows the piano accompaniment for measures 61 and 62. It features a grand staff with treble and bass clefs. Chord symbols Am, G, and F are placed above the treble staff. The piano part consists of chords and moving lines in both hands.

63

how ev - ry - thing____ still turns to gold.____

Detailed description: This system contains the vocal line and piano accompaniment for measures 63 and 64. The vocal line is in treble clef with a 7/8 time signature. The piano accompaniment is in bass clef. The lyrics are "how ev - ry - thing____ still turns to gold.____".

Am G F

Detailed description: This system shows the piano accompaniment for measures 63 and 64. It features a grand staff with treble and bass clefs. Chord symbols Am, G, and F are placed above the treble staff. The piano part consists of chords and moving lines in both hands.

65

And if you lis - ten ver - y hard,

Am G F

67

the tune will come to you at last.

Am G

69

When all are one and one is all. To be a rock and not to roll.

Am G F Am G F

73

72

ff
Ah

ff
Am G F G

75

ah
ah

Am G F Am G

78

rit.
ah *ah*

F G Am G F
rit.

81

SOLO *mp**opt. FINE*

And she's buy - ing a stair - way to heav - en.

opt. FINE

85

p *f*

Ah *p* *f*

Am *p* *f*

* Measures 85 and 86 are optional. If ending after the solo, stop the SoundTrax CD at measure 80.