

Alfred  
**JAZZ**

**PLAY  
ALONG  
SERIES**

VOLUME  
**5**

# FREDDIE HUBBARD & MORE

## 9 JAZZ STANDARDS

FOR C, B $\flat$ , E $\flat$  & BASS CLEF INSTRUMENTS

Produced by Peter BarenBregge

**TNT<sup>2</sup>**  
CUSTOM MIX

For installation, insert the DVD into a computer, double-click on **My Computer**, right-click on the CD drive icon, and select Explore. (Mac users can simply double-click the DVD icon that appears on the desktop.) Open the **"DVD-ROM Materials"** folder, then the **"TNT 2"** folder, and double-click on the installer file. Installation may take up to 15 minutes.

### SYSTEM REQUIREMENTS

#### Windows

7, 8, Vista, XP  
QuickTime 7 or newer  
1.8 GHz processor or faster  
3.3 GB hard drive space, 2 GB RAM minimum  
DVD drive for installation  
Speakers or headphones  
Internet access required for updates

#### Macintosh

OS 10.4 and higher (Intel only)  
QuickTime 7 or newer  
3.3 GB hard drive space, 2 GB RAM minimum  
DVD drive for installation  
Speakers or headphones  
Internet access required for updates



Alfred Music  
P.O. Box 10003  
Van Nuys, CA 91410-0003  
[alfred.com](http://alfred.com)

© 2014 Alfred Music  
All rights reserved. Printed in USA.

*No part of this book shall be reproduced, arranged, adapted, recorded, publicly performed, stored in a retrieval system, or transmitted by any means without written permission from the publisher. In order to comply with copyright laws, please apply for such written permission and/or license by contacting the publisher at [alfred.com/permissions](http://alfred.com/permissions).*

ISBN-10: 1-4706-1041-8  
ISBN-13: 978-1-4706-1041-8

Cover Photo: Freddie Hubbard, Rochester, New York, 1976—© 1976 Tom Marcello, Webster, New York, USA



# FREDDIE HUBBARD & MORE

## 9 JAZZ STANDARDS

FOR C, B $\flat$ , E $\flat$  & BASS CLEF INSTRUMENTS

### CONTENTS

To access the DVD and the Play-Along tracks, see Pages 1 and 3

	<b>C</b>	<b>B<math>\flat</math></b>	<b>E<math>\flat</math></b>	<b>Bass clef</b>
Crisis.....	28.....	56.....	84.....	112
Gibraltar.....	22.....	50.....	78.....	106
Hot House.....	11.....	39.....	67.....	95
Little B's Poem.....	20.....	48.....	76.....	104
Night and Day.....	25.....	53.....	81.....	109
Red Clay.....	18.....	46.....	74.....	102
'Round Midnight.....	14.....	42.....	70.....	98
Sky Dive.....	4.....	32.....	60.....	88
Up Jumped Spring.....	8.....	36.....	64.....	92

*Performers:*

Tony Nalker—Piano  
 Tom Baldwin—Bass  
 Dennis Hoffman—Drums  
 Pete BarenBregge—Tenor Sax  
 Rich Sigler—Trumpet

Sample solos composed by Rich Sigler

Recorded at Bias Studio, Springfield, VA  
 Bob Dawson, engineer

# HOT HOUSE



By Tadd Dameron

SWING  $\text{♩} = 160$ 

(FLUTE OPT. 8VA)

Gmi7(b5) (FORM: AABA)

C7(#9)

Fmi(MA97)



Dmi7(b5)

G13(b9)

CMA9



Gmi7(b5)

C7(b9)

Fmi9(MA97)



Dmi11(b5)

G13(b9)

CMA9



Cmi9

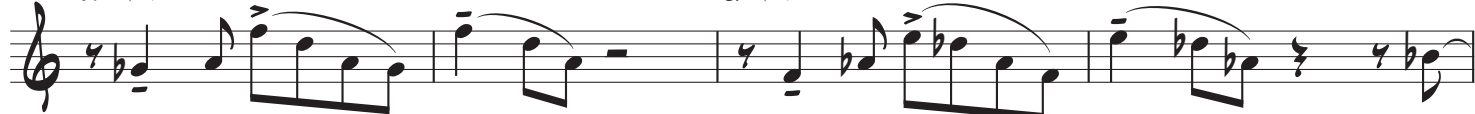
F13(b9)

BbMA9



Ab13(b5)

G13(b5)



Gmi9(b5)

C7(#9)

Fmi(MA97)



Dmi7(b5)

G7(#9)

CMA9

FINE



# NIGHT AND DAY



Words and Music by  
Cole Porter

SWING ♩ = 162

(FORM: AAB)

(FLUTE 8VA)  $B_{maj}^{6/9}$   $F_{mi11}/B^b$   $B^b_{13}(b9)$   $E^b_{maj}^{6/9}$

$(E^b_{maj}^{6/9})$   $B_{maj}^{6/9}$   $F_{mi11}$   $B^b_{13}(b9)$   $E^b_{maj}^6$

$A_{mi}7(b5)$   $A^b_{mi}7$   $G_{mi}7$   $F\#_o7$   $F_{mi11}$

$B^b_{13}(b5)$   $E^b_{maj}^{6/9}$  1. 2.  $G^b_{maj}^{6/9}$

$(G^b_{maj}^{6/9})$   $E^b_{maj}^9$   $G^b_{maj}^6$

$E^b_{maj}^7$   $A_{mi}7(b5)$   $A^b_{mi}7$   $G_{mi}9$

$F\#_o7$   $F_{mi11}$   $B^b_{13}(b9)$  TO CODA  $E^b_{maj}^6$

# HOT HOUSE



By Tadd Dameron

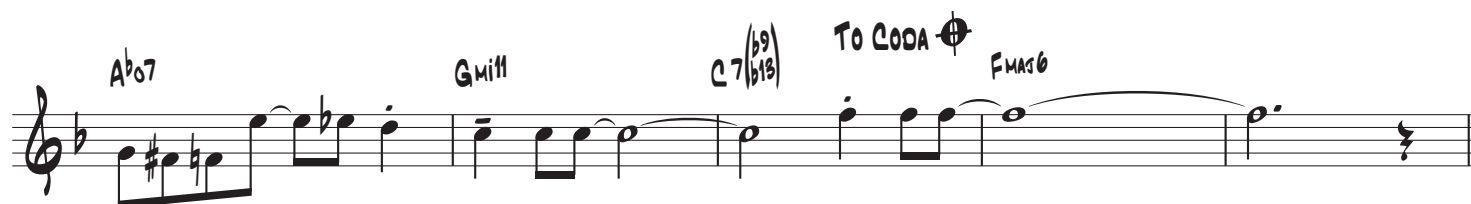
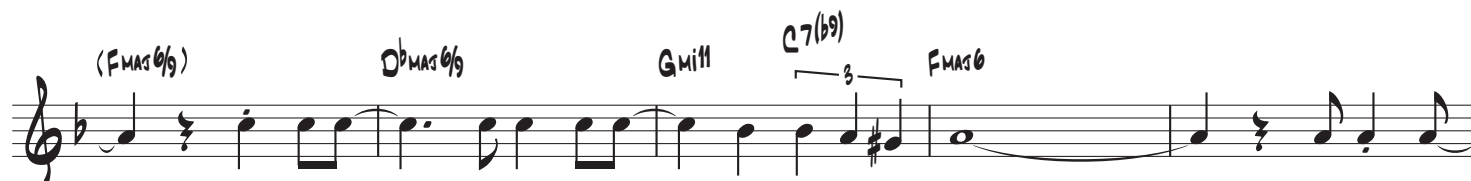
SWING ♩ = 160

Musical score for 'HOT HOUSE' in B-flat major, 4/4 time, Swing tempo (♩ = 160). The score consists of eight staves of music. The key signature is B-flat major (two sharps: F# and C#). The form is AABA. The score includes various chord voicings and melodic lines. The chords are: A mi7(b5) (FORM: AABA), D7(#9), G mi(MA9), E mi7(b5), A 13(b9), D MA9/b9, A mi7(b5), D7(b9/b13), G mi9(MA9), E mi11(b5), A 13(b9), D MA9/b9, D mi9, G 13(b9), C MA9, Bb 13(b9/b5), A 13(b9/b5), A mi9(b5), D7(#9), G mi(MA9), E mi7(b5), A7(#9), D MA9/b9, and FINE.

# NIGHT AND DAY

**B $\flat$** Words and Music by  
Cole PorterSWING  $\text{♩} = 162$ 

S (FORM: AAB)

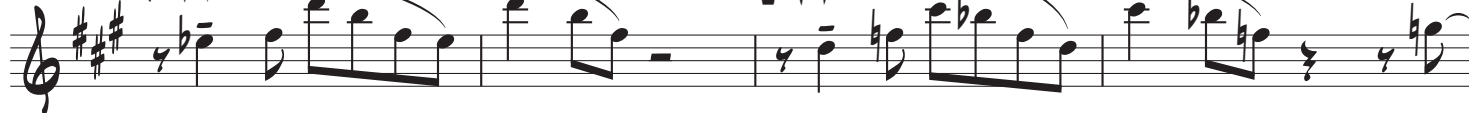


# HOT HOUSE



By Tadd Dameron

SWING ♩ = 160

E<sup>m</sup>7(b5) (FORM: AABA)A7(<sup>#</sup>9)D<sup>m</sup>9(mas7)B<sup>m</sup>7(b5)E<sup>13</sup>(b9)A<sup>mas</sup>6/9E<sup>m</sup>7(b5)A7(<sup>b</sup>9)D<sup>m</sup>9(mas7)B<sup>m</sup>7(b5)E<sup>13</sup>(b9)A<sup>mas</sup>6/9A<sup>m</sup>9D<sup>13</sup>(b9)G<sup>mas</sup>9F<sup>13</sup>(b5)E<sup>13</sup>(b5)E<sup>m</sup>9(b5)A7(<sup>#</sup>9)D<sup>m</sup>9(mas7)B<sup>m</sup>7(b5)E7(<sup>#</sup>9)A<sup>mas</sup>6/9

FINE



# NIGHT AND DAY

**E<sub>b</sub>**Words and Music by  
Cole Porter

SWING ♩ = 162

♩ (FORM: AAB)

7

*A<sup>b</sup>MAS6/9* *Dmi11/G* *G13(b9)* *C<sup>b</sup>MAS6/9*

*(C<sup>b</sup>MAS6/9)* *A<sup>b</sup>MAS6/9* *Dmi11* *G7(b9)* *C<sup>b</sup>MAS6*

*F<sup>#</sup>Mi7(b5)* *F<sup>#</sup>Mi7* *E<sup>b</sup>Mi7* *E<sup>b</sup>o7* *Dmi11*

*G7(b5)* *C<sup>b</sup>MAS6/9* 1. 2. *E<sup>b</sup>MAS6/9*

*(E<sup>b</sup>MAS6/9)* *C<sup>b</sup>MAS9* *E<sup>b</sup>MAS6*

*C<sup>b</sup>MAS7* *F<sup>#</sup>Mi7(b5)* *F<sup>#</sup>Mi7* *E<sup>b</sup>Mi9*

*E<sup>b</sup>o7* *Dmi11* *G7(b9/b13)* **TO CODA** *C<sup>b</sup>MAS6*



# HOT HOUSE



By Tadd Dameron

SWING ♩ = 160

Gmi7(b5)

(FORM: AABA)

C7(#9)

Fmi(MA97)



Dmi7(b5)

G13(b9)

CMA9



Gmi7(b5)

C7(b9)

Fmi9(MA97)



Dmi11(b5)

G13(b9)

CMA9



Cmi9

F13(b9)

BbMA9



Ab13(b5)

G13(b5)



Gmi9(b5)

C7(#9)

Fmi(MA97)



Dmi7(b5)

G7(#9)

CMA9

FINE



# NIGHT AND DAY



Words and Music by  
Cole Porter

SWING ♩ = 162

(FORM: AAB)

7

$B_{MA7}^{\flat 9}$   $F_{mi11}/B^{\flat}$   $B^{\flat}13(b9)$   $E^{\flat}MA7^{\flat 9}$

$(E^{\flat}MA7^{\flat 9})$   $B_{MA7}^{\flat 9}$   $F_{mi11}$   $B^{\flat}7(b9)$   $E^{\flat}MA7^{\flat 6}$

$A_{mi7}(b5)$   $A^{\flat}mi7$   $G_{mi7}$   $F^{\sharp}o7$   $F_{mi11}$

$B^{\flat}7(b5)$   $E^{\flat}MA7^{\flat 9}$  1. 2.  $G^{\flat}MA7^{\flat 9}$

$(G^{\flat}MA7^{\flat 9})$   $E^{\flat}MA7^{\flat 9}$   $G^{\flat}MA7^{\flat 6}$

$E^{\flat}MA7^{\flat 7}$   $A_{mi7}(b5)$   $A^{\flat}mi7$   $G_{mi9}$

$F^{\sharp}o7$   $F_{mi11}$   $B^{\flat}7(b9)$  TO CODA  $E^{\flat}MA7^{\flat 6}$