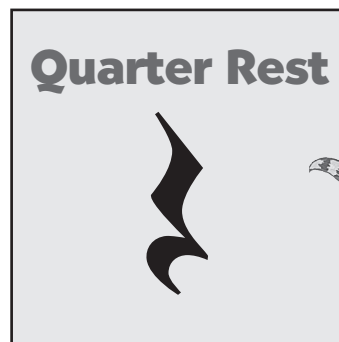


# Contents

The Staff and Treble Clef . . . . .	3	The Note C (3rd String) . . . . .	24
Bar Lines and Measures . . . . .	4	The Note D (3rd String) . . . . .	25
The $\frac{4}{4}$ Time Signature . . . . .	5	The Whole Note . . . . .	26
The Quarter-Note Slash . . . . .	5	Review: All the Notes and Chords in Book 1 . . .	26
Counting Time . . . . .	6	The Dotted Half Note . . . . .	27
The C Chord . . . . .	7	The $\frac{3}{4}$ Time Signature . . . . .	27
The Quarter Rest . . . . .	8	Common Time . . . . .	28
The C <sup>7</sup> and F Chords . . . . .	9	The Note B-flat . . . . .	29
The Repeat Sign . . . . .	10	Tempo Signs . . . . .	30
The G <sup>7</sup> Chord . . . . .	11	Ties . . . . .	30
Write Your Own Song with Four Chords . . . . .	12	Key Signatures . . . . .	31
The Staff . . . . .	13	Pickup Measures . . . . .	32
The Quarter Note . . . . .	14	The Eighth Note . . . . .	33
The Note A (1st String) . . . . .	15	The Dotted Quarter Note . . . . .	34
The Note B (1st String) . . . . .	16	Dynamics . . . . .	35
The Note C (1st String) . . . . .	17	The Downstroke and Upstroke . . . . .	35
The Note E (2nd String) . . . . .	18	The Fermata . . . . .	36
The Note F (2nd String) . . . . .	19	The Note F-sharp . . . . .	37
The Half Rest . . . . .	20	The G and D7 Chords . . . . .	38
The Note G (2nd String) . . . . .	21	Review: All the Notes and Chords You Learned in Books 1 & 2 . . . . .	39
The Notes E, F, G, A, B, and C . . . . .	22	Writing Music Using Everything You've Learned So Far . . . . .	40
The Half Note . . . . .	23		

# The Quarter Rest



The *quarter rest* means to be silent for one beat.

## How to Draw the Quarter Rest

**Step 1:** Draw a short line slanting down from left to right.



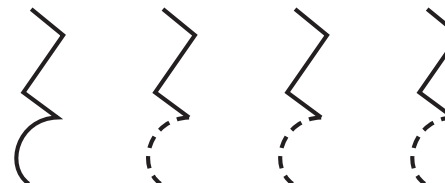
**Step 2:** Draw a longer line slanting down from right to left starting at the bottom of the first line.



**Step 3:** Draw another short line slanting down from left to right starting at the bottom of the second line.



**Step 4:** Draw a curled line, almost like a letter "c," starting at the bottom of the third line.



Now, draw five quarter rests.



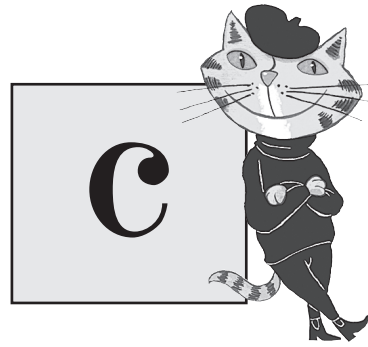
## Counting Time

Fill in the missing beats with quarter rests.

Write the counts below the staff. Put parentheses around the counts that are for rests.

# Common Time

This symbol **C** is a time signature that means the same as  $\frac{4}{4}$  time. There are four beats to each measure.

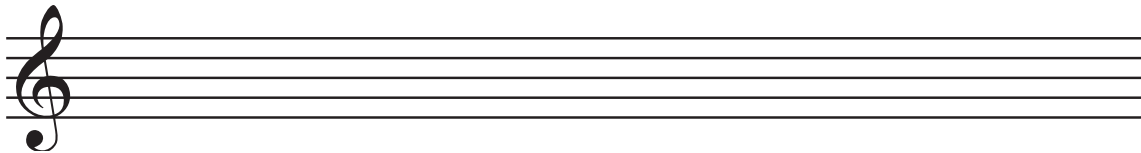


## How to Draw the Common Time Signature

Draw a letter "C" from the fourth line to the second line.



Now, draw six common time signatures.



## Choose the Time Signature

Each of the following examples has either three or four beats in each measure. Place either  $\frac{4}{4}$ , **C**, or  $\frac{3}{4}$  at the beginning of each example. Use each time signature only once.



Time Signature



Time Signature



Time Signature

