

READY TO READ MUSIC

SEQUENTIAL LESSONS IN MUSIC READING READINESS

Jay Althouse

Full Page

Lesson Reproducible Symbols

Introduction	3
Unit 1 – Staff, Clefs, Notes	5
1. The Staff	6 76
2. Treble Clef	7 77
3. Bass Clef	8 78
4. Notes	9
5. Whole Note	10 79
6. Half Note	12 80
7. Quarter Note	14 81
8. Eighth Note	16 82
Unit 2 – Rhythm	19
1. Rests	20
2. Whole Rest and Half Rest	22 83, 84
3. Quarter Rest and Eighth Rest	24 85, 86
4. Barlines and Measures	26 87, 88
5. Beats	28
6. Time Signature	30 89
7. Dots	32 90, 91
8. Ties	34 92
Unit 3 – Pitch	37
1. Note Names in the Treble Clef	39 93
2. Note Names in the Bass Clef	42 94
3. Ledger Lines	44 95
4. Grand Staff	46 96
5. Sharp and Flat	48 97, 98
6. Key Signatures	51
7. Naming Key Signatures	54 99, 100
8. Natural Sign and Accidentals	56 101
Unit 4 – More Musical Symbols and Terms	59
1. How Loud? How Soft?	60 102
2. More About Loud and Soft	62 103
3. How Fast? How Slow?	64 104
4. Staccato and Fermata	66 105, 106
5. Accent, Tenuto, and Marcato	68 107
6. Repeats, First and Second Endings	70 108, 109
7. Vocal Music	71
8. Putting It All Together (<i>L'il Liza Jane</i>)	72
The Symbols of Music	75
Review Answer Key	110
<i>The Water Is Wide</i> , a performance piece	116
<i>Ready to Read Music</i> Certificate	120



Alfred Music
P.O. Box 10003
Van Nuys, CA 91410-0003
alfred.com

Copyright © MMIII by Alfred Music
All rights reserved.

NOTE: The purchase of this book carries with it the right to photocopy this book. Limited to one school/organization only. NOT FOR RESALE.

No part of this book shall be arranged, adapted, recorded, publicly performed, stored in a retrieval system, or transmitted by any means without written permission from the publisher. In order to comply with copyright laws, please apply for such written permission and/or license by contacting the publisher at alfred.com/permissions.

ISBN-10: 0-7390-3285-2 (Book)
ISBN-13: 978-0-7390-3285-5 (Book)

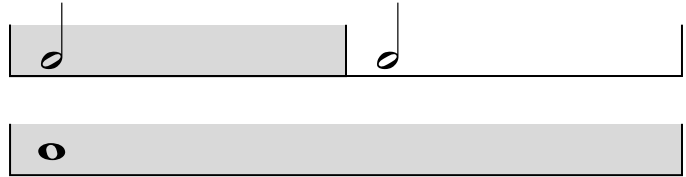
ISBN-10: 0-7390-9670-2 (Book & Data CD)
ISBN-13: 978-0-7390-9670-3 (Book & Data CD)

LESSON 6 *Half Note*

A **half note** looks like this:



Two **half notes** equal one **whole note**.
A **half note** lasts half as long as a **whole note**.

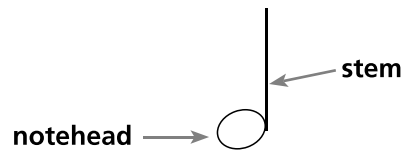


To draw a **half note**, begin by drawing an oval, like a **whole note**. This part of the **note** is called the **notehead**.



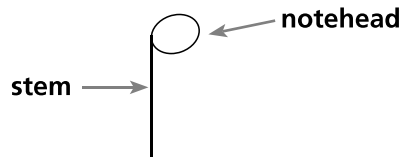
Step 1

Then add a line on the right side of the **notehead**, like this. The line is called a **stem**.

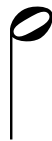
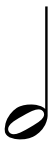


Step 2

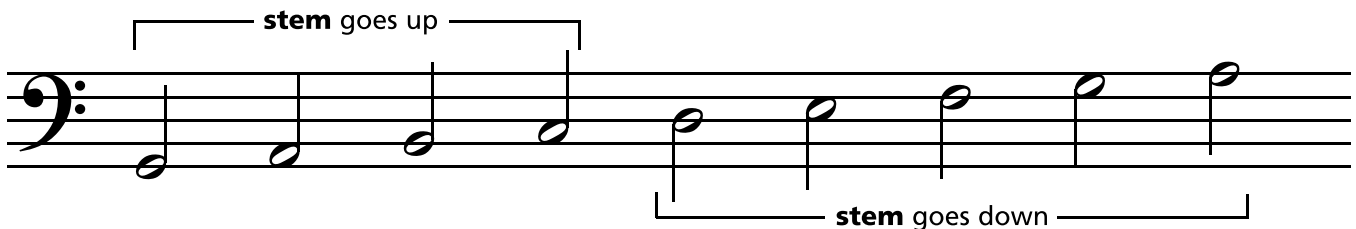
Sometimes the **stem** goes down, like this. If the **stem** goes down, it's on the left side of the **notehead**. If the **stem** goes up, it's on the right side of the **notehead**.



Trace each **half note** shown below. Then draw three more **half notes** to the right of each one you traced.



Half notes look like this on a **staff**:



All **half notes** below the 3rd line have the **stem** going up.
All **half notes** on or above the 3rd line have the **stem** going down.

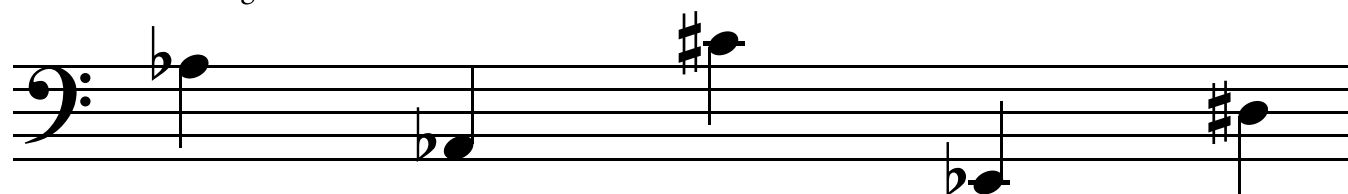
LESSON 5 *Sharp and Flat*

REVIEW

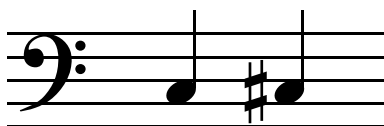
Name the following **notes** in the **treble clef**.



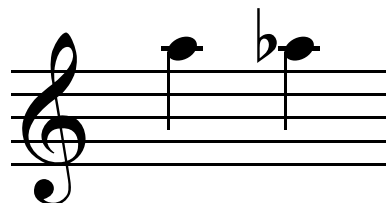
Name the following **notes** in the **bass clef**.



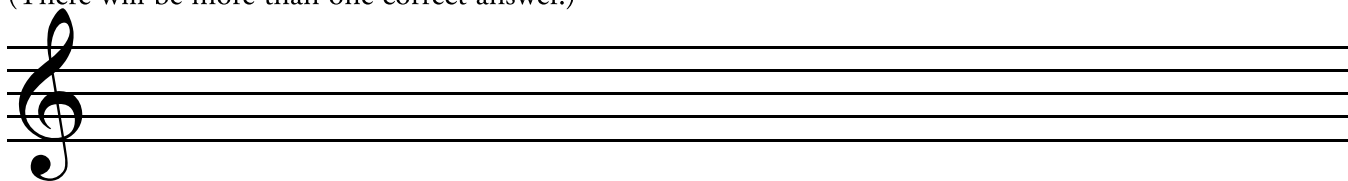
Circle the **note** which is higher.



Circle the **note** which is lower.



Using **quarter notes**, write the following **notes** in the **treble clef**.
(There will be more than one correct answer.)



B \flat

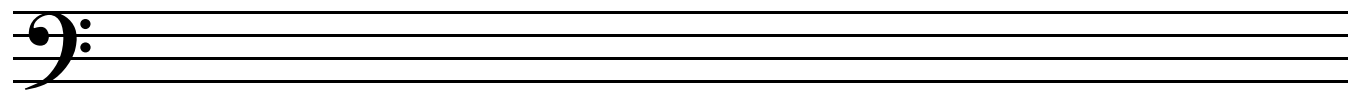
G \sharp

D \flat

F \sharp

C \sharp

Using **half notes**, write the following **notes** in the **bass clef**.
(There will be more than one correct answer.)



A \sharp

D \sharp

G \flat

E \flat

C \sharp