

From *A Christmas Story — The Musical***COUNTING DOWN TO CHRISTMAS**for S.A.T.B. voices and piano
with optional SoundTrax CD*Arranged by
GREG GILPINWords and Music by
BENJ PASEK and JUSTIN PAULWith anticipation ($\text{♩} = \text{ca. } 126\text{-}132$)

PIANO *mf*

F F/A Bbmaj⁹ C F F/A C(add9)

3 SOLO 1 *mp*

Good - bye No -

F F/A Bbmaj⁹ C F C⁷ *mp*

5

mem - ber Thanks - giv - ing's gone. Now ev - 'ry

C(add4) F

* Also available for S.A.B. (40006) and 2-part (40007).
SoundTrax CD available (40008). SoundPax available (40009) - includes score and set of parts for Flute, Clarinet
Bassoon, Alto Saxophone, Tenor Saxophone, F Horn, Trumpet, 2 Trombones, Glockenspiel, Harp, Bass, and Drumset.

© 2010, 2012 PICK IN A PINCH MUSIC and BREATHELIKE MUSIC

All Rights Administered by WB MUSIC CORP.

This Arrangement © 2013 PICK IN A PINCH MUSIC and BREATHELIKE MUSIC

All Rights Reserved. Printed in USA.

Sole Selling Agent for This Arrangement: Alfred Music Publishing Co., Inc.

To purchase a full-length performance recording of this piece, go to alfred.com/downloads

7 *(end solo)*

house you pass has a plas-tic rein-deer on its lawn.

C(add4) *C*7(#5) *F* *F*dim *F*

10 *SOLO 2 mp* **11**

The sea-son's start-ing, I'll give you

*F*dim *8va* *F* *Bbm*6/9

12

proof: the neigh-bors bought a nine-foot danc-ing

*Abmaj*13 *G*ø7 *Bbm*6

14 *(end solo)*

San-ta for their roof.

*Eb/D*b *C*7sus4 *C*7 *Bb/C*

17 DUET
mp

This year, who wants an - oth - er wool cap? This year, I want a gift I

Bb(add2) *F(add2)/A* *Bb(add2)*

want to un - wrap, and I'm _____ run - ning out of

cresc. poco a poco

Dm7 *G7* *G7sus4* *G7(#11)* *G7*

cresc. poco a poco

time. _____

(end duet)

SOPRANO *f*

ALTO

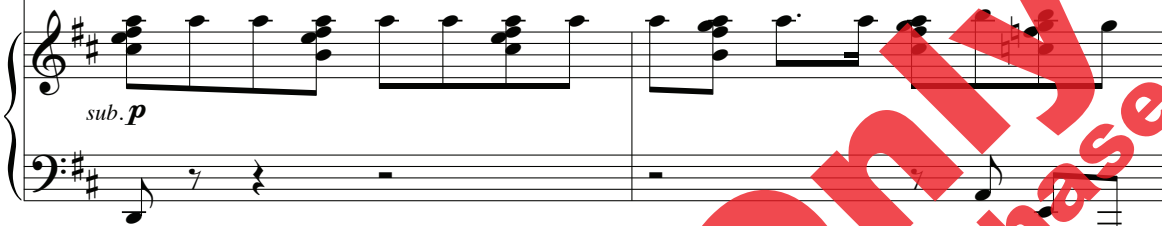
TENOR 'Cause it's *f*

BASS

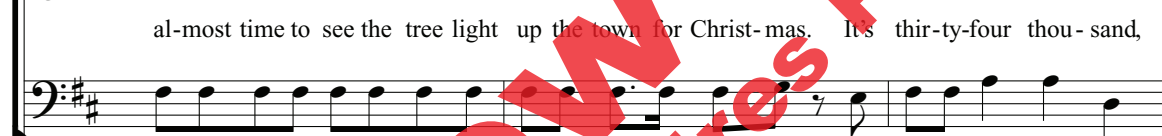
C7sus4 *C(add2)*

f

25

sub. p*sub. p*Dmaj⁹D⁶Dmaj⁹Gmaj⁷A¹³A⁷(#5)*sub. p*

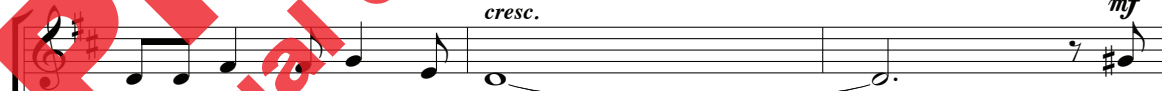
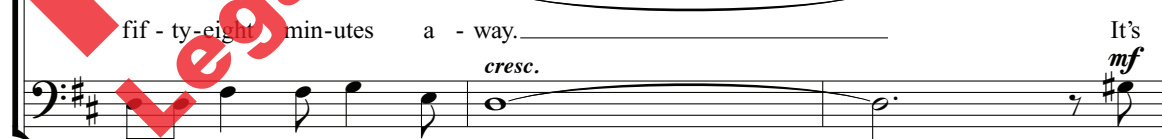
27

Dmaj⁹D⁶D⁹D⁶Gm/B^b

D/A



30

*cresc.**mf**cresc.**mf*

G(add2)

F^{#7}Bm⁹E⁹(#11)*cresc.*

33

al - most near - ly get - ting close to count - ing down to Christ - mas

A Asus A(#11) A

mf cresc. *f*

35

Day!

Gb Gb/Bb Cbmaj⁹ Db Gb Gb/Bb Db(add⁴) Gb Gb/Bb Cbmaj⁹ Db

38

Take out the tin - sel. Break out the gloves. We're get - ting

Gb Cb/Db Db¹³ Gbmaj⁷/Db Db¹³ Gbmaj⁹ Gb⁶

mf

41

clos - er to the hol - i - day that ever - y - bod - y loves.

Db¹³ Gbmaj7/D^b Db7(#5) Gb

43

mf

If you look close - ly, and you be -

G^{bdim} G^b C^bm/G

45

lieve, you might see San - ta soar - ing through the

Amaj⁹ A^bø7 C^bm⁶

47

sky on Christ-mas Eve!

sky on Christ-mas Eve!

E/D

Db7sus4

Db7

Cb/Db

50

opt. SOLO

mp

This year, _____ don't want a book I won't read. This year, _____ I know the

This year, _____ don't want a book I won't read.

This year, _____ I know the

Cb(add2)

Gb(add9)/Bb

Cb(add2)

mp

mp

53

(end solo)

mp

cresc. poco a poco

thing that I need. And I'm _____ run-ning out of

thing that I need.

And

mp

cresc. poco a poco

run-ning out of

Ebm11

Ab7

Ab7sus4

Ab7(#11)

Ab7

cresc. poco a poco

62

thir - ty - four thou - sand, fif - ty - three min - utes a -

Eb/Bb Abmaj7 G7

64

way, a - way. way. It's

Cm7 G13(#11) mf

cresc. mf

66

al - most near - ly get - ting close to count - ing down to Christ - mas

mf cresc.

Bb7 Bb7sus4 Bb7(b5) Bb7

cresc.

68 *f* Day! Christ-mas

f Eb Abmaj9 Bb7 Eb Bb/Ab Bb

70 *mf* Day! This year, I want a

E Amaj9 B7 E Cm Bsus A(add2) *mf*

73 *mf* shin - y red bike. This year, how 'bout a

I want a mod - el toy plane. E(add2)/G# A(add2)



75

Li - on - el train? This year, I hope that

f

I want it this year.

E(add2)/G# C(add2)

77

this year on Christ - mas. San - ta will hear. It's Christ - mas.

Will San - ta hear? Count - ing down to

G(add2)/B C(add2)

And I'm run - ning out of

And I'm

Christ - mas. And I'm

Em¹¹ A⁷ A^{7sus4} A^{7(#11)} A⁷

82 time. *mp cresc.* There's on - ly twen - ty - four

mp cresc. this Christ-mas, this Christ-mas, this Christ-mas, this Christ-mas,

mp cresc.

mp cresc.

Am⁷/D

84 days *mf*

this Christ-mas, this Christ-mas, till Christ-mas Day. It's

mf

Cmaj⁷/D D⁷

mf

86 *sub. p cresc.* *f*

sub. p cresc. al - most near - ly get - ting close to count - ing down to Christ-mas. It's

f

G Am¹¹ D⁹

sub. p cresc. *f*

88 *sub. p* *cresc.* *f*

al - most time to see the tree light up the town for Christ-mas. It's

sub. p *cresc.* *f*

G Gaug G⁶ G⁷ Cmaj⁷ Cm

sub. p *cresc.* *f*

90

thir - ty - four thou - sand, for - ty - eight min - utes a -

G/D B

92

way.

Em A¹³(#11)

94

to Christ-mas

Al - most near - ly get - ting close to count - ing down to Christ-mas

D⁷sus⁴

96

day!

Al - most Christ - mas! Near - ly Christ - mas!

Al - most near - ly get - ting close to, right a - round the, fast ap - proach - ing,

G G/B Cmaj⁹ Dsus G G/B D/C D⁹

98

Soon it will be, can't be Christ-mas

Day!

Al - most Christ - mas Day!

soon it will be, can't be Christ-mas

Day!

G G/B Cmaj⁹ Dsus G% G