

SHED A LITTLE LIGHT

for S.A.T.B. voices and piano
with optional SoundPax and SoundTrax CD*

Arranged by
GREG JÄSPERSE

Words and Music by
JAMES TAYLOR

Gently driving (♩ = ca. 74)

SOPRANO
ALTO

TENOR
BASS

PIANO

Let us turn— our thoughts— to-day— to Mar—
mf

Gently driving (♩ = ca. 74)

mf

3

- tin Lu - ther - King — and rec - og - nize that there are ties be - tween - us. All —
mf

* SoundTrax CD available (39999). SoundPax available (40000) - includes parts for Guitar, Bass, and Drumset.

© 1991 COUNTRY ROAD MUSIC, INC.
This Arrangement © 2013 COUNTRY ROAD MUSIC, INC.
All Rights Reserved. Printed in USA.

Sole Selling Agent for This Arrangement: Alfred Music Publishing Co., Inc.
To purchase a full-length performance recording of this piece, go to alfred.com/downloads

6

men and wom - en liv - ing on the earth,

8

ties of hope_ and love_ of sis - ter and broth - er - hood. That we are

11

bound_ to - geth - er in our de - sire to see_ the world_ be - come_ a

13

place in which_ our chil - dren can grow free and strong._____ We are

16

bound_____ to- get- er by the task that stands_ be- fore_ us and the

18

road that lies _____ a - head._____ We are bound_____ and we are

Slightly faster (♩ = ca. 80)

20 SOLO

22

There is a feel-ing like the clen- ing of a fist.

bound.

Slightly faster (♩ = ca. 80)

23

There is a hun-ger in the cen-ter of the chest.

25

— There is a pas-sage through the dark-ness and — the mist. —

27

— And though the bod - y sleeps, the heart — will nev - er rest. —

Dark - ness and the mist. Heart will nev - er —

mf

cresc.

29 30

Shed a lit - tle light, oh Lord. —

rest. *f* Shed a lit - tle light, oh - oo* Lord,

f

31

Oh, now —

so that we can see. — Just — a lit - tle

*change the vowel rhythmically throughout

Musical staff for vocal line at measure 33, showing a melodic line in G major with a key signature of one flat.

Just a lit - tle light, oh Lord.

Musical staff for vocal line at measure 34, continuing the melody from the previous measure.

light, oh Lord.

Wan-na stand it on

Musical staff for bass line at measure 34, providing harmonic support for the vocal line.

Piano accompaniment for measures 33-34, featuring chords in the right hand and bass notes in the left hand.

Musical staff for vocal line at measure 35, showing a melodic line in G major.

Stand it on up, oh Lord,

yeah, now.

Musical staff for vocal line at measure 36, continuing the melody.

up,

stand it on up, oh - oo Lord.

Musical staff for bass line at measure 36, providing harmonic support.

Piano accompaniment for measures 35-36, featuring chords in the right hand and bass notes in the left hand.

37

Won't ya shed a lit-tle light.

Wan-na walk it on down. Shed a lit-tle light, oh-oo

39

Lord. Can't get no light from the dol-lar bill...

41

f

No, no,— no,— no,

Don't give me no light from a T. V. screen.

44

no.—

When I open my eyes, I wan-na drink my fill from the

46 *mf* 48

There is a feel-ing like__ the clen- ing of__ a fist..

mp

well on the hill.

Ah mp

mf

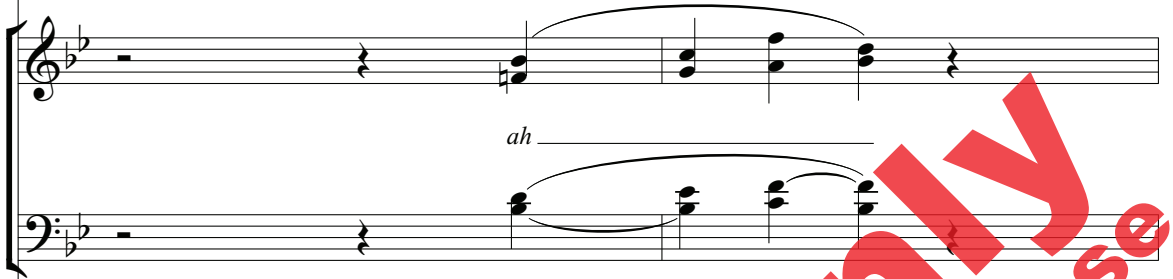
49

— There is a hun-ger in__ the cen - ter of__ the chest. — There is a

ah



pas-sage through the dark-ness and the mist. And though the



ah



bod - y sleeps.



The heart will nev - er rest.

Shed a lit - tle



cresc.

56

SOLO

f

Shed a lit-tle light, oh Lord.

SMALL GROUP

S. *f*

A. light, oh - oo Lord,

so that we can see

T. *f*

B.

58

Just a lit-tle light

mf

We can see

light,

oh

Just a lit-tle light, oh Lord.

now. Stand it on up.

Lord.

Wan-na stand it on up, stand it on

Stand on up, Lord.

up, oh oo Lord. Wan-na walk it on

64

Won't ya shed a lit-tle light? Shed a lit-tle light, oh oo

This system contains two staves. The top staff is a vocal line in treble clef with a 7/8 time signature. It features eighth-note patterns in the first measure and a half note in the second. The bottom staff is a piano accompaniment line in treble clef, showing a whole rest in the first measure and a whole note in the second.

down. Shed a lit-tle light, oh-oo Lord.

This system contains two staves. The top staff is a vocal line in treble clef with a whole note in the first measure and a half note in the second. The bottom staff is a piano accompaniment line in bass clef, featuring a whole note in the first measure and a half note in the second.

66

1. Lord. Lord.

This system contains two staves. The top staff is a vocal line in treble clef with a whole note in the first measure and a half note in the second. The bottom staff is a piano accompaniment line in treble clef, showing a whole rest in the first measure and a whole note in the second.

Shed a lit-tle Shed a lit-tle light, oh-oo

This system contains two staves. The top staff is a vocal line in treble clef with a whole note in the first measure and a half note in the second. The bottom staff is a piano accompaniment line in bass clef, featuring a whole note in the first measure and a half note in the second.

1. 2.

This system contains two staves. The top staff is a piano accompaniment line in treble clef with a first ending (1.) and a second ending (2.). The bottom staff is a piano accompaniment line in bass clef with a whole note in the first measure and a half note in the second.

Won't ya shed a lit-tle light?

Lord. Shed a lit-tle light, oh-oo

rit. Won't ya shed a lit - tle light? *Freely*

Lord. *rit.* Shed a lit-tle light, oh— Lord. *Freely*