

YAMAHA BAND STUDENT

A BAND METHOD FOR GROUP OR INDIVIDUAL INSTRUCTION

by

Sandy Feldstein
John O'Reilly


Welcome to the world of MUSIC!

You now belong to a special group of musicians from all over the world whose lives are being enriched with music.

Membership in the YAMAHA BAND STUDENT course will provide you with a foundation for your future in music: as a composer, rock musician, teacher, conductor, symphony musician, or a listener enjoying the life-long benefits of music. It all starts here!

Your teacher's special skills, a fine instrument, your personal commitment and the YAMAHA BAND STUDENT is all it takes.

Welcome to the world of music, welcome to YOUR world!



Sandy Feldstein



John O'Reilly



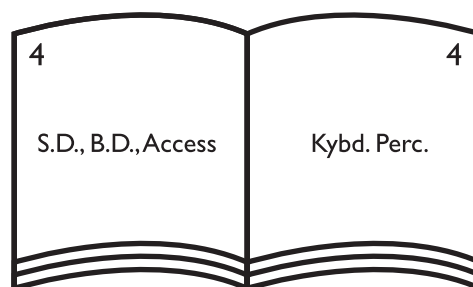
© Copyright MCMLXXXVIII by Alfred Publishing Co., Inc.

All rights reserved. Printed in USA.

YAMAHA[®]

is a registered trademark of
Yamaha Corporation of America

The combined percussion book is based on a two-page format. The left-hand pages are for the S.D., B.D. and accessory instruments while the right-hand pages are for keyboard percussion. Practice both pages. Your teacher will tell you which page to play in band class.



Instrumentation

Flute
Oboe
Bassoon
B \flat Clarinet
E \flat Alto Clarinet
B \flat Bass Clarinet
E \flat Alto Saxophone
B \flat Tenor Saxophone
E \flat Baritone Saxophone
B \flat Trumpet/Cornet
Horn in F
Horn in E \flat
Trombone
Baritone T.C.
Baritone B.C.
Tuba
Percussion—S.D, B.D., Access.
Keyboard Percussion
Combined Percussion
Piano Accompaniment
Piano Accompaniment Cassette
Conductor's Score

RUDIMENTS LEARNED IN THIS BOOK

DOUBLE STROKES



SINGLE PARADIDDLE



FLAMS



FLAM TAP



FLAM ACCENT



5-STROKE ROLL



9-STROKE ROLL



PERFORMING TECHNIQUES & PERCUSSION ACCESSORIES

TRIANGLE

The triangle should be suspended from a piece of string or gut.
The triangle should be struck with a triangle beater on the side opposite the open end.

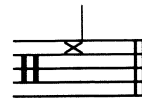
SUSPENDED CYMBAL

Place on cym. stand;
strike w/mallet or stick.

WOODBLOCK

Suspend on a W.B. stand. Strike in the
center, above the resonating groove,
with a rubber marimba mallet.

ON RIM



SUSPENDED CYMBAL ROLL



TRIANGLE ROLL



RIM SHOT

