

RUDIMENTS LEARNED IN THIS BOOK

DOUBLE STROKES



SINGLE PARADIDDLE



FLAMS



FLAM TAP



FLAM ACCENT



5-STROKE ROLL



9-STROKE ROLL



PERFORMING TECHNIQUES & PERCUSSION ACCESSORIES

TRIANGLE

The triangle should be suspended from a piece of string or gut.
The triangle should be struck with a triangle beater on the side opposite the open end.

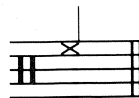
SUSPENDED CYMBAL

Place on cym. stand; strike w/mallet or stick.

WOODBLOCK

Suspend on a W.B. stand. Strike in the center, above the resonating groove, with a rubber marimba mallet.

ON RIM



SUSPENDED CYMBAL ROLL



TRIANGLE ROLL



RIM SHOT

