

# Contents

THE PARTS OF YOUR BANJO . . . . .	2	<i>Red River Valley</i> . . . . .	36
CHOOSING A BANJO . . . . .	2	<i>Red River Valley (Solo)</i> . . . . .	37
HOW TO HOLD YOUR BANJO . . . . .	3	THE KEY OF D . . . . .	38
SETTING UP YOUR BANJO . . . . .	4	<i>Hard, Ain't It Hard</i> . . . . .	38
HOW TO TUNE YOUR BANJO . . . . .	5	<i>Hard, Ain't It Hard (Version 2)</i> . . . . .	39
THE LEFT HAND . . . . .	6	THE E MINOR CHORD . . . . .	40
THE RIGHT HAND . . . . .	7	<i>Red Apple Juice</i> . . . . .	40
GETTING ACQUAINTED WITH TABLATURE . . . . .	8	THE E MINOR CHORD WITH	
SOUND-OFF: HOW TO COUNT TIME . . . . .	9	A HAMMER-ON . . . . .	41
Quarter Notes and Eighth Notes . . . . .	9	<i>Red Apple Juice (Version 2)</i> . . . . .	41
Time Signatures . . . . .	9	THE D CHORD . . . . .	42
RIGHT-HAND PICKING . . . . .	10	<i>Feelin' Lonesome</i> . . . . .	42
Position of the Right Hand When Playing . . . . .	10	THE ALTERNATE F CHORD . . . . .	43
Different Ways to Pick the Strings with		<i>Little Maggie</i> . . . . .	43
the Right Hand . . . . .	10	LITTLE MAGGIE SOLO VARIATIONS . . . . .	44
<i>Open-String Exercise</i> . . . . .	11	<i>Chords and Chords</i> . . . . .	46
<i>Open-String Sequence</i> . . . . .	11	<sup>3</sup> / <sub>4</sub> TIME . . . . .	47
THE D7 CHORD . . . . .	12	<sup>3</sup> / <sub>4</sub> PINCH . . . . .	47
CHANGING CHORDS . . . . .	13	Playing the Strings Individually . . . . .	48
<i>Chord Exercise</i> . . . . .	13	Variations . . . . .	48
<i>More Chord Exercises</i> . . . . .	13	Introduction to "Down in the Valley" . . . . .	48
<i>Train on the Island</i> . . . . .	14	<i>Down in the Valley</i> . . . . .	49
INTRODUCING THE PINCH . . . . .	15	<i>Down in the Valley (Version 2)</i> . . . . .	50
PINCH VARIATIONS . . . . .	16	BACKUP PLAYING . . . . .	51
THREE-FINGER PINCH . . . . .	17	Alternate Chords. . . . .	51
<i>Tom Dooley</i> . . . . .	18	BACKUP PATTERNS . . . . .	52
EARL SCRUGGS AND THE ROLL . . . . .	19	Backup Pattern 1 . . . . .	52
THE FORWARD ROLL . . . . .	19	Backup Pattern 2 . . . . .	52
Introducing the Accent . . . . .	20	SLIDES . . . . .	54
Rhythm . . . . .	20	BENDING THE STRINGS . . . . .	55
Right-Hand Position . . . . .	20	C TUNING . . . . .	56
<i>Tom Dooley (Version 2)</i> . . . . .	21	<i>Careless Love</i> . . . . .	56
FORWARD ROLL VARIATIONS . . . . .	22	<i>Careless Love (Solo)</i> . . . . .	57
Other Songs . . . . .	22	APPENDIX . . . . .	58
THE C CHORD . . . . .	23	Chord Diagrams for Banjo in G Tuning . . . . .	58
<i>The Roving Gambler</i> . . . . .	24	Chord Diagrams for Banjo in C Tuning . . . . .	59
THE BACKWARD ROLL . . . . .	25	GETTING ACQUAINTED WITH MUSIC . . . . .	60
<i>The Roving Gambler (Version 2)</i> . . . . .	25	The Staff . . . . .	60
THE FORWARD-BACKWARD ROLL		Measures . . . . .	60
(THUMB LEADS). . . . .	26	Clefs . . . . .	60
Introducing the Pickup . . . . .	26	Naming the Notes. . . . .	61
<i>Goin' Down the Road Feelin' Bad</i> . . . . .	27	Rhythm . . . . .	61
<i>Goin' Down the Road Feelin' Bad (Version 2)</i> . . . . .	28	Flats ♭, Sharps ♯, and Naturals ♮ . . . . .	62
<i>Goin' Down the Road Feelin' Bad (Version 3)</i> . . . . .	29	Key Signatures. . . . .	62
The Hammer-On . . . . .	30	ADDITIONAL INFORMATION ON	
Hammer-Ons with the C Chord. . . . .	31	BANJO HEADS, STRINGS, BRIDGES,	
Hammer-Ons with the G Chord . . . . .	32	AND FINGERPICKS . . . . .	62
<i>Hawthorne Hammers</i> . . . . .	33	Choice of Banjo Heads . . . . .	63
THE CAPO . . . . .	34	Strings, Bridges, and Fingerpicks . . . . .	63
The F and G7 Chords . . . . .	35	FINAL THOUGHTS . . . . .	63
About Capo Notation . . . . .	35	CERTIFICATE OF PROMOTION . . . . .	64

Copyright © 2014 by Alfred Music  
All rights reserved. Printed in USA.



Alfred Music  
P.O. Box 10003  
Van Nuys, CA 91410-0003  
alfred.com

No part of this book shall be reproduced, arranged, adapted, recorded, publicly performed, stored in a retrieval system, or transmitted by any means without written permission from the publisher. In order to comply with copyright laws, please apply for such written permission and/or license by contacting the publisher at [alfred.com/permissions](http://alfred.com/permissions).

ISBN-10: 0-7390-8615-4  
ISBN-13: 978-0-7390-8615-4

Front cover photos: Banjo courtesy of Gibson USA • Photo of Janet Robin by Kevin Estrada  
Back cover photo models: Sheyna Gee (top), [Facebook.com/sheynageemusic](https://www.facebook.com/sheynageemusic) • Mark Burgess (middle left) • Dick Weissman (bottom)  
Back cover photos: Top: Greg Pidfigurny • Middle left: Larry Lytle

## The Backward Roll

Start with the 1st string, and work backward across the strings. The sequence is:

1. Middle finger picks up on 1st string
2. Thumb picks down on 5th string
3. Index finger picks up on 2nd string
4. Middle finger picks up on 1st string
5. Thumb picks down on 5th string
6. Index finger picks up on 2nd string
7. Middle finger picks up on 1st string
8. Thumb picks down on 5th string

## THE ROVING GAMBLER (VERSION 2)

Below is the TAB for "The Roving Gambler" using the backward roll.

**Moderately**

**G**

Melody (Teacher)

4/4

0 0 0 2 0 0 0

I'm a roving gambler, I

Banjo

4/4

0 0 0 0 0 0 0 0 0 0

M T I M T I M T etc.

0 0 2 0 0 0 0 0 2 0 0 0

gamble all around; When ever I meet with a

3

0 0 0 0 0 0 0 0 0 0 0 0

0 0 0 0 0 0 0 0 0 0 0 0

**C** **G**

2 0 0 0 2 0 0 2 0

deck of cards I lay my money down.

6

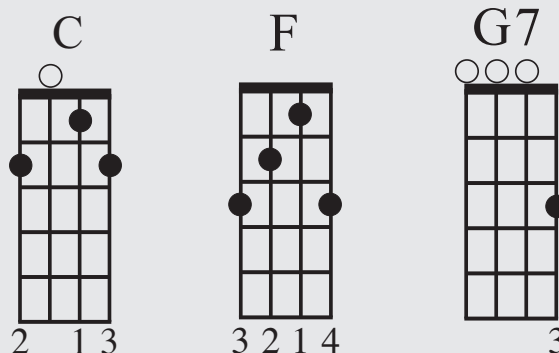
0 0 0 0 2 1 2 1 2 0 0 0 0 0 0

0 0 0 0 0 0 0 0 0 0 0 0 0 0 0

## The Key of D

To play in the key of D, keep your capo at the 2nd fret. You will be fingering in the key of C, but with the capo at the 2nd fret, you'll actually sound in D. Don't forget to tune your 5th string two frets higher to an A.

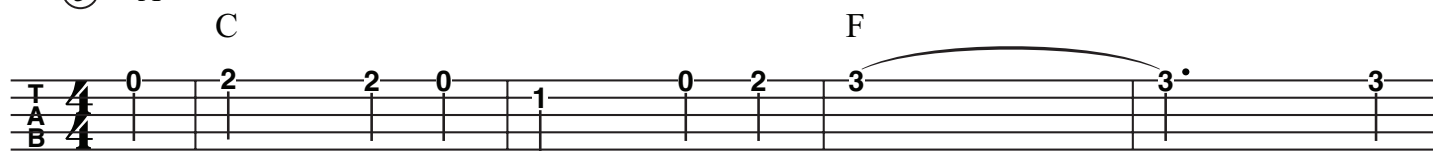
To the right are the three chords you'll need:



## HARD, AIN'T IT HARD

Capo II

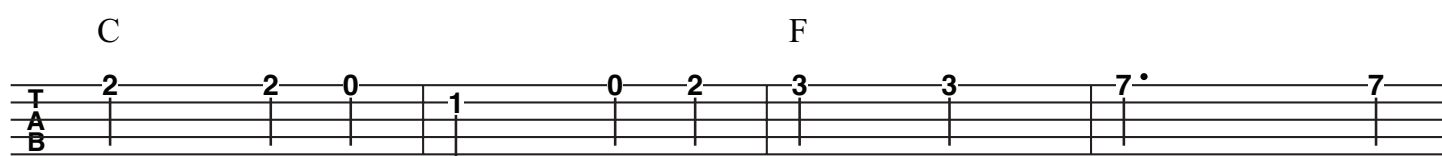
⑤ = A



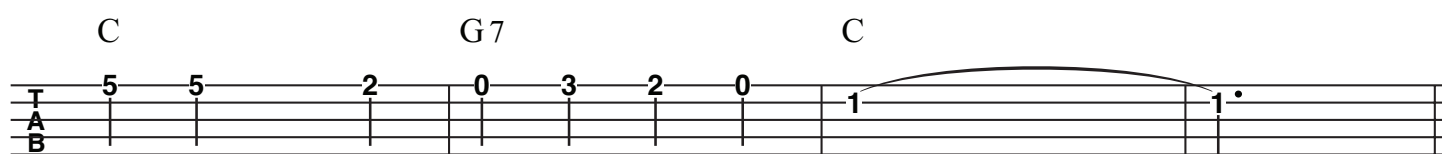
It's hard, and it's hard, ain't it hard \_\_\_\_\_ To



<sup>5</sup> love one who nev - er will love you. \_\_\_\_\_ It's



<sup>9</sup> hard, and it's hard, ain't it hard, O Lawd, To



<sup>13</sup> love one who nev - er would be true. \_\_\_\_\_

### Additional Lyrics

*There is a place in this old town,  
That's where my true love lays around,  
He takes other women, right down on his knee,  
And he tells them a little tale he won't tell me.*

*Don't go to drinking and a gamblin',  
Don't go there your sorrows to drown,  
That hard liquor place is a lowdown disgrace,  
It's the meanest old place in this town.*

## $\frac{3}{4}$ Time

So far, everything you have played has been in either  $\frac{2}{4}$  or  $\frac{4}{4}$  time. Let's learn a new time signature now:  $\frac{3}{4}$  time ("three-quarter time"), which is also referred to as *waltz time*. In  $\frac{3}{4}$ , there are three beats for each measure of music. Below are some right-hand bluegrass strums for playing in  $\frac{3}{4}$  time. This new time signature is usually played very evenly, with a slight emphasis on the first beat of the measure.

# $\frac{3}{4}$

## $\frac{3}{4}$ Pinch

Let's try a pinch in  $\frac{3}{4}$  time. Follow these steps:

1. Your right-hand index finger plays the 3rd or 2nd string
2. Your right-hand middle finger plays the 1st string while the thumb plays the 5th string at the same time

$\frac{3}{4}$

G C D7 G

0 0 | 2 2 | 0 0 | 0

0 0 | 2 0 0 | 0 0 0 | 0

I M M | I M M | I M M | I T

Below is another way to play in  $\frac{3}{4}$  time with the pinch:

1. Your right-hand thumb plays the 4th or 5th string
2. Your right-hand index finger plays the 2nd string while the middle finger plays the 1st string at the same time

$\frac{3}{4}$

G C D7 G

0 0 | 2 2 | 0 0 | 0

0 0 | 0 2 2 | 0 0 0 | 0

T M M | T M M | T M M | I T

# Backup Patterns

In  $\frac{4}{4}$  time, backup patterns can be played on the 2nd and 4th beats of each measure. These beats are referred to as the *backbeats*, or *afterbeats*. In these instances, you do not play the 1st and 3rd beats.

## Backup Pattern 1

In backup playing, the banjo will usually take a secondary role, playing the 2nd and 4th beats, while the fiddle, mandolin, or dobro take solos. Here's an example of what the banjo would play:

1st beat: Rest

2nd beat: Play

3rd beat: Rest

4th beat: Play

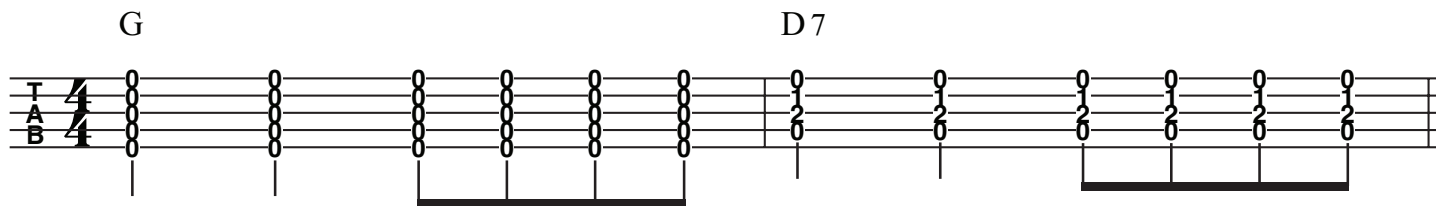
In TAB notation, it looks like this:



For these chords, it is common to use a *three-finger pinch*, with the right thumb, index, and middle fingers playing.

## Backup Pattern 2

Here's another way to play backup. The rhythm for this pattern is two quarter notes, followed by four eighth notes, or long, long, short, short, short, short. Here it is in TAB notation:



\* This accent (Λ) means to emphasize the chord and cut the sound off short.