

as performed by the cast of *Glee***EXTRAORDINARY MERRY CHRISTMAS**for 3-part mixed voices and piano
with optional SoundTrax CD*Arranged by
ANDY BECKWords and Music by **ADAM ANDERS,**
PEER ASTROM, and SHELLY PEIKEN

Rock (♩ = ca. 132)

PIANO *mf*

4 PART I 5

PART II

PART III *opt. SOLO mf*

It came in - to _ my dreams _ last _ night, _ a

7

great big man in _ red _ and _ white. _ He told me that _ it's gon -

* Also available for S.A.T.B. (38246) and S.S.A. (38248). SoundTrax CD available (38249).

© 2011 CRITERION MUSIC CORPORATION, FOX FILM MUSIC CORPORATION,
and ROR SONGS (c/o SONGS OF KOBALT MUSIC PUBLISHING)

This Arrangement © 2012 CRITERION MUSIC CORPORATION,

FOX FILM MUSIC CORPORATION, and ROR SONGS

All Rights Reserved. Used by Permission. Printed in USA.

Sole Selling Agent for This Arrangement: Alfred Music Publishing Co., Inc.

To purchase a full-length performance recording of this piece, go to alfred.com/downloads

10

- na — be — a spe - cial year — for — you — and — me. —

13

Un - der-neath — the mis - tle - toe, — hold me tight — and kiss —

16

— me slow. — The snow is high, — so come in-side. — I

f
cresc. *f* (end solo) It's a ver-
 wan - na hear__ you say to me:

cresc. *f*

22

- y, ver - y mer - ry, mer - ry Christ -

SMALL GROUP (2nd time only)

24

mf
 E - ven bet - ter than the one be - fore. -

- mas Gon - na par - ty on__ 'til San -

SMALL GROUP (2nd time only)

27

(rejoin section)

He's knock-in' on my front door. —

- ta grants my wish - es. — Got my ha -

30

- lo on, — I know who — I want, — it's

2nd time to CODA \oplus
(p. 8, m. 57)

32

who I'm with. — It's an ex - tra - or - di - nar -

2nd time to CODA \oplus
(p. 8, m. 57)

35

- y mer - ry Christ - mas. _

39

mf 40

It does - n't come _ as a _ sur - prise, _

42

who's been naugh - ty, _ who's _ been _ nice. _ There's some - one here _ for ev -

45

- 'ry - one. _ An - oth - er year _ has _ just _ be - gun. _

48

Si - lent night, _ not in - side. _ Sleigh - bells ring _ un - til _

51

_ the light. _ Heats ex - plode, _ here we go. _ It's

D.S. al CODA
(p. 4, m. 22)

54 *cresc.* *f*

all like they're in - side your eyes. It's a ver -

D.S. al CODA
(p. 4, m. 22)

cresc. *f*

CODA

57

- y mer - ry Christ - mas.

CODA

59 **60**

Won't you meet me by the tree? -

62

Slip a - way ___ so se - cret - ly. ___

64

Can't you see ___ how this ___ could be ___ the great - est gift ___ of all? ___

67 *sub. mp* 68

sub. mp It's a ver - y, ver - y mer - ry, mer - ry Christ-

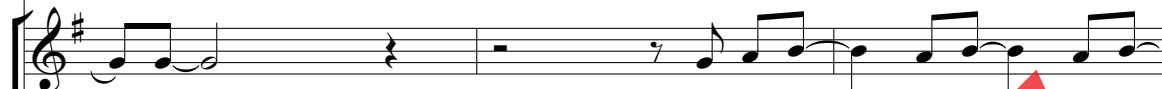
sub. mp

SMALL GROUP

70

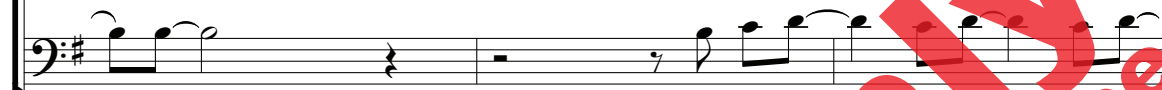
mp

E - ven bet - ter than the one be - fore. —



- mas. —

Gon - na par - ty on 'til San -



73

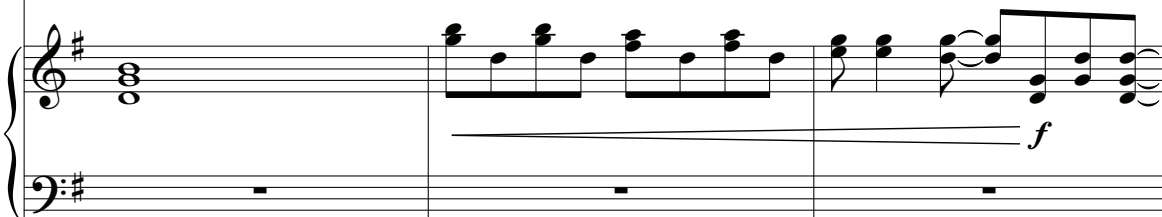


He's knock - in' on my front door. —



- ta grants my wish - es. —

Got my ha -



76

- lo on, — I know who — I want, — it's who I'm with. —

79

80

It's an ex - tra - or - di - nar - y mer - ry Christ -
 (It's a ver) - y, ver - y mer - ry, mer - ry Christ -

f

E - ven bet - ter than the one be - fore. —

- mas. — It's a ver -
- mas. — It's an ex -

Mer - ry Christ - mas! —

- tra - or - di - nar - y mer - ry Christ - mas! —

dp

Ped.