

# CHRISTMAS GLORY HALLELUJAH

for S.S.A. and keyboard  
with optional instruments and InstruTrax CD\*

Arranged by

**TOM FETTKE & THOMAS GRASSI**

**Traditional Spiritual**

Calypso, island feel (♩ = ca. 96)

KEYBOARD

1 Eb

4 2 Eb2

6 SOPRANO I *mp* 7 *with hushed intensity*

SOPRANO II

ALTO *mp*

Glo-ry, glo - ry, Hal - le - lu - jah! Lis - ten

Glo-ry, glo - ry, Hal - le - lu - jah! Lis - ten

E♭

8

\*Parts for 2 flutes, percussion, rhythm, and director's score, No. 36950, and a split track/accompaniment/full performance compact disc, No. 36951, are available separately.

Also available in SATB, (36949) SAB, (37643) and 2-part voicing (37645).

\*\* If using keyboard only, begin here.

Copyright © 2011 by Alfred Music Publishing Co., Inc.  
All Rights Reserved. Printed in USA.

THE CCLI LICENSE DOES NOT GRANT PERMISSION TO PHOTOCOPY THIS MUSIC.

9

now to — what we say. — Glo-ry, glo - ry, Hal - le -

now to — what we say. — Glo-ry, glo - ry, Hal - le -

Ab6 Ab Eb Ab Bb Eb

12

lu - jah! Christ was born — on Christ - mas day

lu - jah! Christ was born — on Christ - mas day.

Cm7 Fm7 Eb Bb Fm Bb Eb

3

15

*mf* 16

Glo - ry, glo - ry, Hal - le -

*mf*

Glo - ry, glo - ry, Hal - le -

Ab Cm Bb Eb2

*mf*

17

lu - jah! Vir - gin Mar - y, — meek and

lu - jah! Vir - gin Mar - y, — meek and

E♭ Ab

3

19

mild. — Glo-ry, glo - ry, Hal - le - lu - jah! Was the

mild. — Glo-ry, glo - ry, Hal - le - lu - jah! Was the

E♭ Cm7 Fm7

22

moth - er of the Child.

moth - er of the Child.

E♭ B♭ Fm B♭ E♭

24 25 *f*

Glo - ry, Hal - le - lu - jah!

*f*

Glo - ry, Hal - le - lu - jah!

*f*

Ab Fm Cm Bb Eb Ab Eb

26

Glo - ry, Hal - le - lu - jah! Glo - ry, Hal - le - lu - jah to the

Glo - ry, Hal - le - lu - jah! Glo - ry, Hal - le - lu - jah to the

Ab Eb Eb Cm7

28

new - born King! — Glo - ry, Hal - le - lu - jah!

new - born King! — Glo - ry, Hal - le - lu - jah!

F2 Bb Eb Ab Eb

30

Glo - ry, Hal - le - lu - jah! Glo - ry, Hal - le - lu - jah to the

Glo - ry, Hal - le - lu - jah! Glo - ry, Hal - le - lu - jah to the

Ab Eb Cm7

32

new-born King!—

Glo - ry, Hal - le -

new-born King!—

Glo - ry, Hal - le -

Eb Fm B Bb Bb E

ff

34

lu - jah! Though His cra - dle— was a

lu - jah! Though His cra - dle— was a

A

36

stall. — Glo - ry, glo - ry, Hal - le - lu - jah! He is

stall. — Glo - ry, glo - ry, Hal - le - lu - jah! He is

E2 C#m7 F#m7

39

God — and Lord of all

God — and Lord of all

E B F#m E

41

Glo - ry, Hal - le - lu - jah!

Glo - ry, Hal - le - lu - jah!

A F#m C#m B E A E

43

Glo - ry, Hal - le - lu - jah!      Glo - ry, Hal - le - lu - jah to the

Glo - ry, Hal - le - lu - jah!      Glo - ry, Hal - le - lu - jah to the

A      E      C#m7

45

new - born King! —      Glo - ry, Hal - le - lu - jah!

new - born King! —      Glo - ry, Hal - le - lu - jah!

F#2      B      E      A      E

47

Glo - ry, Hal - le - lu - jah!      Glo - ry, Hal - le - lu - jah to the

Glo - ry, Hal - le - lu - jah!      Glo - ry, Hal - le - lu - jah to the

A      E      C#m7

49

50 SOLO (or small ensemble)

Musical staff with treble clef, key signature of three sharps (F#, C#, G#), and a whole rest.

Hal - le -

Musical staff with treble clef, key signature of three sharps, and lyrics: new-born King!\_

new-born King!\_

Musical staff with treble clef, key signature of three sharps, and lyrics: Glo - ry, Hal - le -

Glo - ry,

Hal - le -

Musical staff with treble clef, key signature of three sharps, and lyrics: new-born King!\_ Glo - ry, Hal - le -

new-born King!\_

Glo - ry,

Hal - le -

Piano accompaniment staff with treble clef, key signature of three sharps, and chords: E, B, F#m, B, C, F.

E B F#m B C F

Piano accompaniment staff with bass clef, key signature of three sharps, and a melodic line.

51

Musical staff with treble clef, key signature of two flats (Bb, Eb), and lyrics: lu - jah!

lu - jah!

Musical staff with treble clef, key signature of two flats, and lyrics: lu - jah! hear the heav'n - ly an - gels

lu - jah!

hear the heav'n - ly

an - gels

Musical staff with treble clef, key signature of two flats, and lyrics: lu - jah! hear the heav'n - ly an - gels

lu - jah!

hear the heav'n - ly

an - gels

Piano accompaniment staff with treble clef, key signature of two flats, and chords: Bb6, Bb.

Bb6 Bb

Piano accompaniment staff with bass clef, key signature of two flats, and a melodic line.





53

Glo - ry, Hal - le - lu - jah! — Hal - le - lu - jah! —

sing. — Glo - ry, glo - ry, Hal - le - lu - jah! Praise —

sing. — Glo - ry, glo - ry, Hal - le - lu - jah! Praise —

**F** **Dm7** **Gm7**

56

— Glo - ry, Hal - le - lu - jah! —

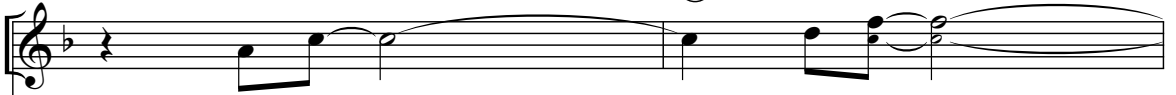
to — the new - born King. Glo - ry,

to — the new - born King. Glo - ry,

**F** **Gm** **F** **Bb**  
**C** **C** **C** **C**

58

8



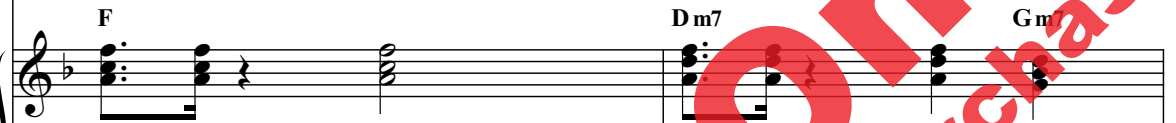
Hal - le - lu - jah!



glo - ry, Hal - le - lu - jah! Come and



glo - ry, Hal - le - lu - jah! Come and



F

Dm7

Gm



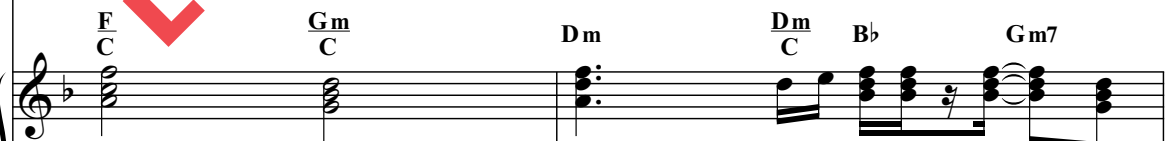
Glo - ry, hal - le - lu - jah!



join the an - gels, sing prais - es



join the an - gels, sing prais - es



F/C

Gm/C

Dm

Dm/C

Bb

Gm7



62

— Sing, Hal - le - lu - jahs

to the new - born King. Hal - le - lu - jahs

to the new - born King. Hal - le - lu - jahs

$\frac{F}{C}$   $\frac{Gm}{C}$   $\frac{F}{C}$   $\frac{Gm}{C}$   $Dm$   $\frac{Dm}{C}$   $Bb$   $Gm$   $\frac{F}{C}$

65

to the King! Hal - le - lu - jah!

to the King! Hal - le - lu - jah!

to the King! Hal - le - lu - jah!

$Gm7$   $\frac{Bb}{C}$   $F$