

GREEN DAY ON STAGE: SELECTIONS FROM *AMERICAN IDIOT*

for S.S.A. voices and piano
with optional SoundPax and SoundTrax CD*

Arranged by
LISA DeSPAIN

LAST NIGHT ON EARTH

Slowly (♩ = ca. 68)

staggered breathing

p

SOPRANO I
SOPRANO II

ALTO

PIANO

Oo

staggered breathing

p

Oo

Slowly (♩ = ca. 68)

p (for rehearsal only)

5

* Also available for S.A.T.B. (35827) and S.A.B. (35828).

SoundTrax CD available (35830).

SoundPax available (35831) - includes score and set of parts for Violin, Viola, Cello, Bass, Guitar, Glockenspiel, and Drumset.

LAST NIGHT ON EARTH

Lyrics by **BILLIE JOE**, Music by **GREEN DAY**

© 2009 **WB MUSIC CORP.** and **GREEN DAZE MUSIC**

All Rights Administered by **WB MUSIC CORP.**

This Arrangement © 2011 **WB MUSIC CORP.** and **GREEN DAZE MUSIC**

All Rights Reserved. Printed in USA.

Sole Selling Agent for This Arrangement: Alfred Music Publishing Co., Inc.

To purchase a full-length performance recording of this piece, go to alfred.com/downloads

10 Medium Rock (♩ = ca. 78)

SOLOIST

mf

Musical notation for the soloist part, starting with a treble clef and a key signature of three flats (B-flat major/D-flat minor).

I walk a lone - ly road, the on - ly one that I ___ have ev - er known...

Medium Rock (♩ = ca. 78)

SOPRANO I

Empty musical staff for Soprano I.

SOPRANO II

Empty musical staff for Soprano II.

ALTO

Empty musical staff for Alto.

Medium Rock (♩ = ca. 78)

Fm

A♭

E♭

B♭

mf (play mm. 10 -15 only in absence of guitar)

Piano accompaniment for measures 10-15, showing chords and bass line.

12

Musical notation for the soloist part, starting with a treble clef and a key signature of three flats.

___ Don't know where it goes, but it's home to me ___ and I walk a - lone...

Empty musical staff for Soprano I.

Empty musical staff for Soprano II.

Empty musical staff for Alto.

Fm

A♭

E♭

B♭

Piano accompaniment for measures 12-15, showing chords and bass line.

BOULEVARD OF BROKEN DREAMS
Lyrics by BILLIE JOE, Music by GREEN DAY
© 2004 WB MUSIC CORP. and GREEN DAZE MUSIC
All Rights Administered by WB MUSIC CORP.
This Arrangement © 2011 WB MUSIC CORP. and GREEN DAZE MUSIC
All Rights Reserved.

14

16 DUET
mf

Musical staff with lyrics: I walk this emp-ty street

Musical staff with lyrics: Ah, — ah, — ah, — ah. Ah, ah, ah, ah, *sub-p*

Musical staff with lyrics: Ah, ah, ah, ah, ah, ah, ah, ah. Ah, ah, ah, ah, *sub-p*

Piano accompaniment with chords: Fm, Ab, Eb, Bb, Fm, Ab

17

Musical staff with lyrics: on the boul - e - vard of bro - ken dreams, where the cit - y sleeps and

Musical staff with lyrics: ah, ah, ah, ah. Ah, ah, ah, ah,

Musical staff with lyrics: ah, ah, ah, ah. Ah, ah, ah, ah,

Piano accompaniment with chords: Eb, Bb, Fm, Ab

19

I'm the on - ly one___ and I walk a - lone. ___

sub. mf

ah, ah, ah, ah. Ah, ___ ah, ___

sub. mf

ah, ah, ah, ah. ___ Ah, ah, ah, ah.

E \flat B \flat Fm A \flat

21

SOPRANO SOLO

I walk a-lone,___ I walk a-lone. ___

ALTO SOLO

I walk a-lone,___ I walk a...

ah, ___ ah. Ah, ___ ah, ___ ah. ___

ah, ah, ah, ah. Ah, ah, ah, ah, ah, ah, ah.

E \flat B \flat Fm A \flat E \flat B \flat



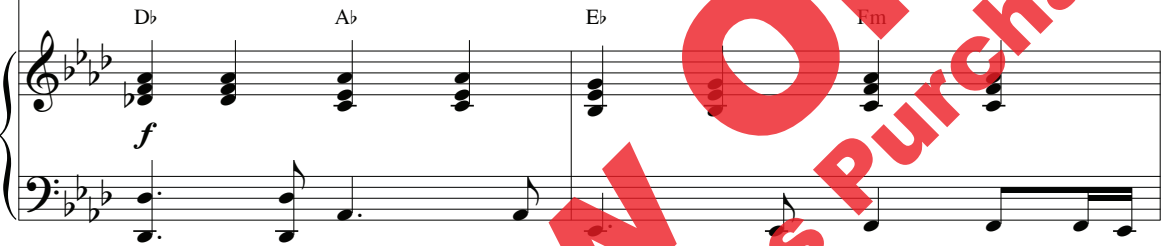
24



My shadow's the only one that walks beside me.



My shadow's the only one that walks beside me.



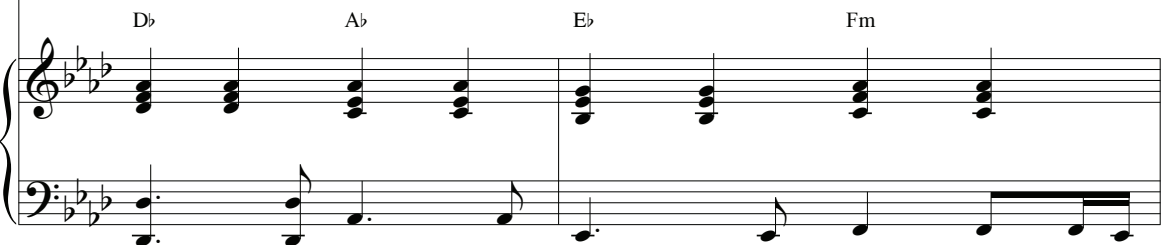
26



My shallow heart's the only thing that's beating.



My shallow heart's the only thing that's beating.



28

Some-times I wish some - one out there will find me.

Some-times I wish some - one out there will find me.

Chords: D \flat , A \flat , E \flat , Fm

30

SOPRANO I

'Til then I walk a - lone.

SOPRANO II

'Til then I ah.

ALTO

'Til then I walk a - lone.

Chords: D \flat , A \flat , Csus 4

33

LAST NIGHT ON EARTH



SOPRANO I



SOPRANO II

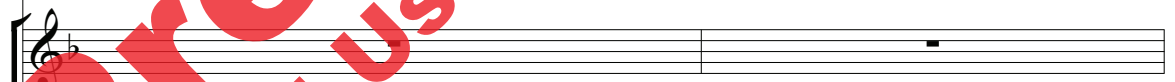
ALTO



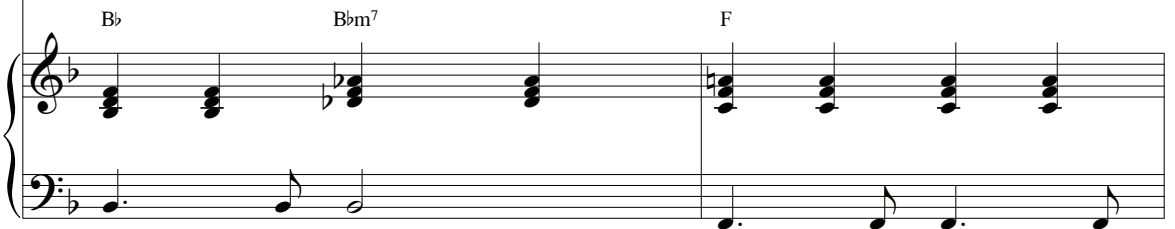
I text a post - card sent to you._____ Did it go through?_____



35



Send - ing all my love_____ to you._____



37

You are the moon - light of my life ev - 'ry night.

39

Ah, _____

Giv - ing all my love to you.

Ah, _____

41

SOPRANO SOLO

f

With ev - 'ry breath_ that I am worth_ here on earth. ³

ah, _____

ah, _____

A A+ A⁶ A

43

I'm send - ing all my love_ to_ you. _____

ah, _____ ah. _____ You, you, you, you.

ah. _____ You, you, you, you.

D Dm A

45

So if you dare to sec-ond guess, you can rest ³

Ah, ah,

Ah, ah,

47

as sured that all my love's for you.

ah, ah. You, you, you, you.

ah. You, you, you, you.



49

SOPRANO SOLOIST

f
My beat-ing heart be-longs to you.

Oo. _____

You, you, you, you.

Oo.

You, you, you, you.

D Dm A

51

ALTO SOLOIST

I walked for miles 'til I found you.

Oo. _____

You, you, you.

Oo.

You, you, you.

D Dm A

53

I'm here to hon-or you. If I lose ev - 'ry-thing in the fire,

I'm here to hon-or you. If I lose ev - 'ry-thing in the fire,

D Dm A A/G F# A/E

55

rit.

DUET
freely

WAKE ME UP WHEN SEPTEMBER ENDS

56 Moderately (♩ = ca. 102)

I'm send-ing all my love to you.

rit.

Moderately (♩ = ca. 102)

Moderately (♩ = ca. 102)

A

mp (play mm. 56 -65 only
in absence of guitar)

WAKE ME UP WHEN SEPTEMBER ENDS
 Lyrics by BILLIE JOE, Music by GREEN DAY
 © 2004 WB MUSIC CORP. and GREEN DAZE MUSIC
 All Rights Administered by WB MUSIC CORP.
 This Arrangement © 2011 WB MUSIC CORP. and GREEN DAZE MUSIC
 All Rights Reserved.

58 SOPRANO I

SOPRANO II

ALTO *mp*

Sum - mer has come and passed, the in - no - cent can nev -

A/G# F#m7

61

- er last. Wake me up when Sep - tem - ber ends...

D Dm

64

66 *mp*

Like my fa - ther's come to pass, -

Like my fa - ther's come to pass, -

A A A/G#

(play)

68

sev - en years__ has gone__ so fast.__ Wake me up__

sev - en years__ has gone__ so fast.__ Wake me up__

F#m7 A/E D

71

when Sep - tem - ber ends.__

when Sep - tem - ber ends.__

Dm A A A/G#

74

Here comes__ the rain a - gain,__ fall - ing from the stars._

Here comes__ the rain a - gain,__ fall - ing from the stars._

F#m C#m Dadd9

77

Drenched in my pain a - gain, — be -

Drenched in my pain a - gain, — be -

A A/G# F#m C#m

80

com - ing who we — are. —

com - ing who we — are. —

Dadd9 E

cresc.

83

Like my fa - ther's come to pass, — sev - en years — has gone — so fast. —

Like my fa - ther's come to pass, — sev - en years — has gone — so fast. —

C C/B Am7 C/G

f

87

Wake me up — when Sep-tem - ber ends. —

Wake me up — when Sep-tem - ber ends. —

F Fm C

90

91

Here comes — the rain a - gain, —

Here comes — the rain a - gain, —

Am Em

93

fall - ing from the stars. — Drenched in — my

fall - ing from the stars. — Drenched in — my

F C G/B Am

96

pain a - gain, be - com - ing who we are.

Em F G

99 21 GUNS

ff

One, twen-ty-one guns, lay down your arms, give up the fight.

C E/B A C/G F C

102

One, twen-ty-one guns, lay down your arms

One, twen-ty-one, twen-ty one guns, your arms

G C E/B A C/G

21 GUNS

Words and Music by BILLIE JOE, GREEN DAY, DAVID BOWIE, and JOHN PHILLIPS

© 2009 WB MUSIC CORP., GREEN DAZE MUSIC, UNIVERSAL MUSIC CORPORATION, TINTORETTO MUSIC, and RZO MUSIC LTD.

All Rights on behalf of itself and GREEN DAZE MUSIC Administered by WB MUSIC CORP.

{This song contains elements of "All The Young Dudes" by David Bowie. © 1972 (Renewed) RZO Music, Ltd. Tintoretto Music, Chrysalis Music Ltd., and EMI Music Publishing, and "San Francisco (Be Sure To Wear Flowers In Your Hair)" by John Phillips, © 1967 (Renewed) Universal Music Corp.}

This Arrangement © 2011 WB MUSIC CORP., GREEN DAZE MUSIC, UNIVERSAL MUSIC CORPORATION,

TINTORETTO MUSIC, and RZO MUSIC LTD.

All Rights Reserved.

105

in - to the sky. 1. You and I. 2.

in - to the sky. You and I.

F C 1. G 2. G

108

You and I.

You and I.

F C Gsus⁴ G F C

111

You and I.

You and I.

Gsus⁴ G F C G

114 Slowly, but steady (♩ = ca. 92)

LAST NIGHT ON EARTH

staggered breathing *f* *Oo.*

staggered breathing *f* *Oo.*

Oo.

Detailed description: This system contains the first two staves of music. The top staff is a vocal line in treble clef, starting with a whole rest followed by a half note G4, then a half note A4, and a half note B4. The bottom staff is a piano accompaniment in treble clef, starting with a whole rest followed by a half note G4, then a half note A4, and a half note B4. The tempo is 'Slowly, but steady' and the time signature is common time. The key signature has one sharp (F#).

Slowly, but steady (♩ = ca. 92)

sub. f

Detailed description: This system contains the piano accompaniment for the second system. It consists of two staves: a treble clef staff and a bass clef staff. The tempo is 'Slowly, but steady' and the time signature is common time. The key signature has one sharp (F#). The piano part features a series of chords in the right hand and sustained chords in the left hand.

117

Ah.

Ah.

Detailed description: This system contains the third system of music, starting at measure 117. It includes a vocal line in treble clef and a piano accompaniment in treble clef. The vocal line has a whole note G4, a whole note A4, and a whole note B4. The piano accompaniment has a whole note G4, a whole note A4, and a whole note B4. The tempo is 'Slowly, but steady' and the time signature is common time. The key signature has one sharp (F#).