

HOSANNA DEO!

for S.S.A.B. voices and piano
with optional PianoTrax CD*

By GREG GILPIN (ASCAP)

With dynamic energy (♩ = ca. 126)

detached, agitated

PIANO

p cresc. poco a poco

3

6

SOPRANO I & II

ALTO

BARITONE

legato
p cresc.

Ho - san - na De - o!

f

sub. p cresc.

* Also available for S.S.A.A. (35677).
PianoTrax 3 Accompaniment CD available (34744).

Copyright © 2011 by Alfred Music Publishing Co., Inc.
All Rights Reserved. Printed in USA.

To purchase a full-length performance recording of this piece, go to alfred.com/downloads

9

mp cresc. Ho - san - na De - o! *mf* Ho - san - na De -

mf

12

sub. p o! *p* Ho - san - na De - o. Ho - san - na.

sub. p

14

Ho - san - na De - o. Ho - san - na.

sub. mf

16

mf cresc.

Ho - san - na De - o!

mf cresc.

Ho - san - na De - o, ho - san - na De - o. Ho - san - na De - o, ho - san - na De - o.

cresc.

18

Ho - san - na De - o!

Ho - san - na De - o, ho - san - na De - o. Ho - san - na De - o, ho - san - na De - o.

20

Ho - san - na De - o!

Ho - san - na De - o!

Ho - san - na De - o, ho - san - na De - o. Ho - san - na De - o, ho - san - na De - o.

22 *sub. mp* 24 *p*

Ho - san - na De - o. Ho - san - na. In ex -

sub. mp *p*

sub. mp *mf* *sub. p legato*

25 cel - sis, in ex - cel - sis.

28 Ho - san - na in ex -

31

DESCANT

32

p cresc.

Ho - san - na.

S.

p cresc.

A.

cel - sis. In ex - cel - sis,

B.

p cresc.

p cresc.

34

Ho - san - na De - o. Ho - san - na,

in ex - cel - sis. Ho - san - na

37 *mf* *f* (rejoin section)

ho - san - na, ho-san-na De - o, ho-san- na! _____

in _____ ex - cel - sis! _____

mf *f*

mf *f*

mf *f*

40

S. *legato*
p cresc.

A. Ho - san - na De - o! _____ Ho - san - na De -

B. *mp cresc.*

detached, agitated

sub. p cresc.

43

o! _____ *mf* Ho - san - na De -

mf

mf

45

o! _____ *sub. p* Ho - san - na De - o. Ho - san - na. *p*

sub. p

47

Ho - san - na De - o. Ho - san - na.

sub. mf

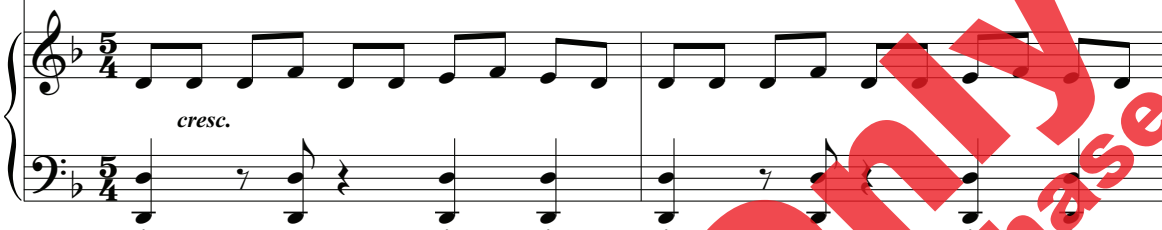
49

mf cresc.

Ho - san - na De - o!

mf cresc.

Ho - san - na De - o, ho - san - na De - o. Ho - san - na De - o, ho - san - na De - o.

cresc.

51



Ho - san - na De - o!



Ho - san - na De - o, ho - san - na De - o. Ho - san - na De - o, ho - san - na De - o.



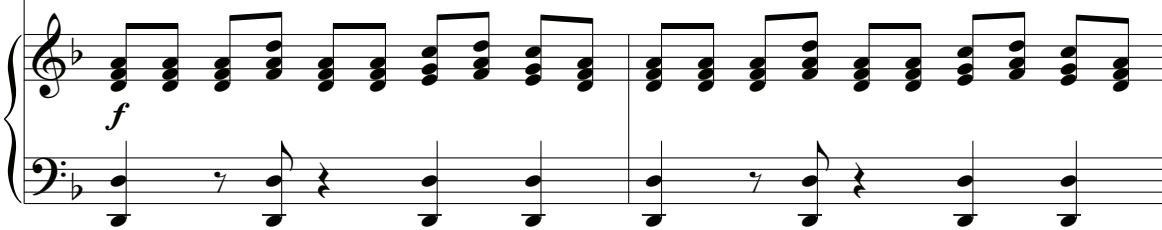
53



Ho - san - na De - o!

f

Ho - san - na De - o, ho - san - na De - o. Ho - san - na De - o, ho - san - na De - o.



55 *sub. mp*

Ho - san - na De - o. Ho - san - na.

sub. mp

sub. mp

57 *sub. f*

Al - le - lu - ia, al - le - lu - ia. Al - le -

sub. f

sub. f

61

lu - ia, Al - le - lu - ia,

65

al - le - lu - ia. Al - le - lu - ia!

Musical notation for measures 65-68, including vocal line and piano accompaniment. The key signature has one flat (Bb) and the time signature is 2/4. Measure 65 starts with a 6/8 time signature change. Measure 68 ends with a 5/4 time signature change.

Piano accompaniment for measures 65-68, including treble and bass staves. The notation features chords and moving lines in both hands, corresponding to the vocal line above.

69

Ho - san - na De - o, ho - san - na De - o. Ho - san - na De - o, ho - san - na De - o.

sub. p *mp* *mp*

Musical notation for measures 69-70, including vocal line and piano accompaniment. The key signature has one flat (Bb) and the time signature is 5/4. Dynamics include *sub. p* and *mp*.

Piano accompaniment for measures 69-70, including treble and bass staves. The notation shows chords and moving lines in both hands.

71

Ho - san - na De - o, ho - san - na De - o. Ho - san - na De - o!

mf *f* *mf* *f*

Musical notation for measures 71-72, including vocal line and piano accompaniment. The key signature has one flat (Bb) and the time signature is 5/4. Dynamics include *mf* and *f*.

Piano accompaniment for measures 71-72, including treble and bass staves. The notation shows chords and moving lines in both hands.